

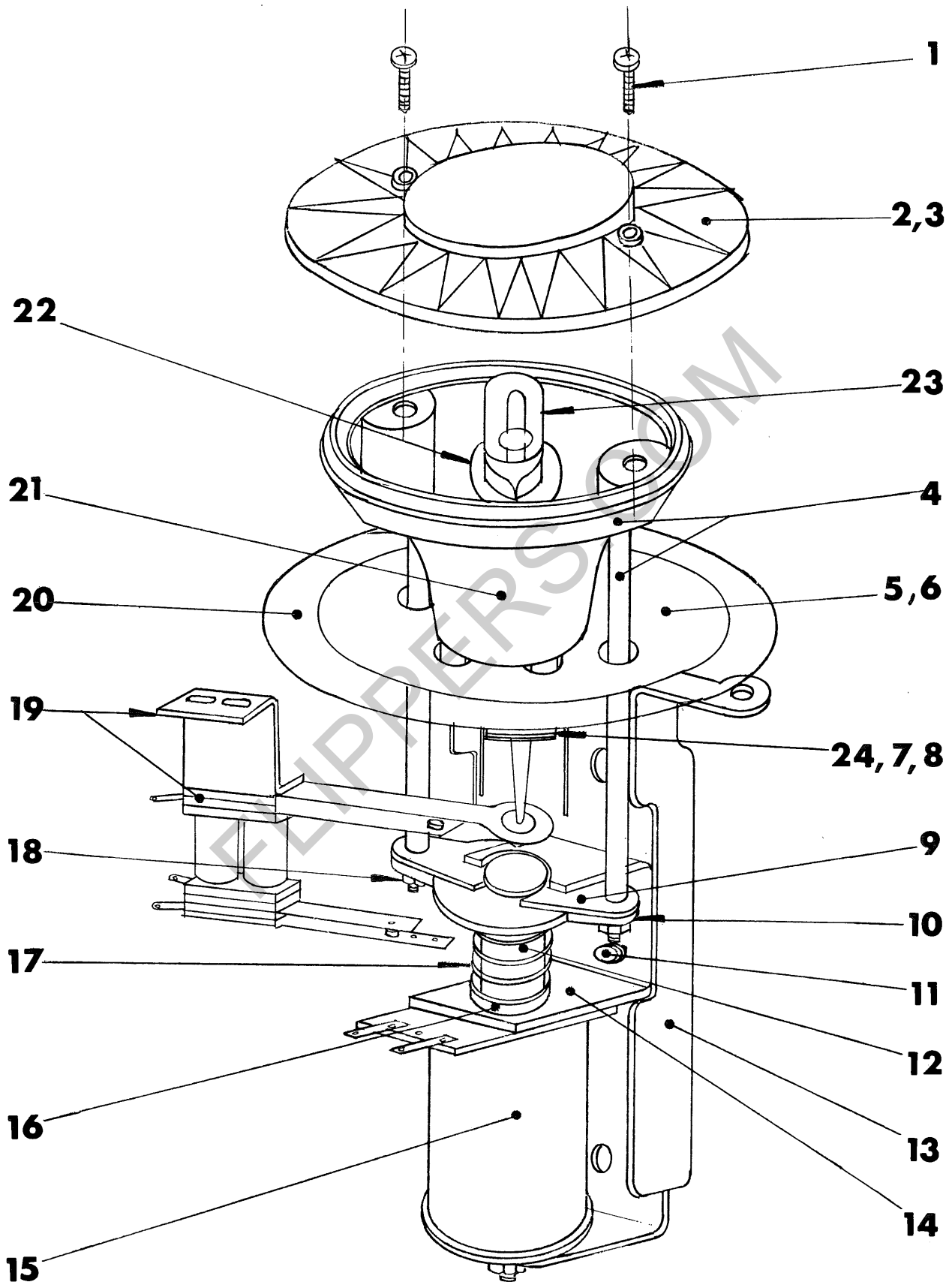
WHEN ORDERING PARTS

1. ORDER ALL PARTS BY NUMBER AND DESCRIPTION.
SPECIFY PART NO. AND NAME OF GAME.
2. FIGURE PRICES AS QUOTED IN CATALOG, ALL PRICES
ARE SUBJECT TO CHANGE WITHOUT NOTICE.
3. RETURNED MERCHANDISE WILL NOT BE ACCEPTED
UNLESS PREVIOUSLY AUTHORIZED.

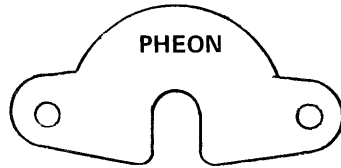
TABLE OF CONTENTS

THUMPER BUMPER ASSEMBLY	1
THUMPER BUMPER PARTS	2
THUMPER BUMPER PARTS	3
REBOUND KICKER ASSEMBLY	4
SLING SHOT KICKER ASSEMBLY	5
SLING SHOT KICKER PARTS	6
BALL DUMP SOLENOID ASSEMBLY	7
DRUM WHEELS	8
FLIPPER ASSEMBLY	9
FLIPPER PARTS	10,11
BALL DUMP ROD ASSEMBLY	12
REBOUND SWITCH	12
FRONT PANEL ASSEMBLY	13
FRONT PANEL PARTS	14,15
HANDLE PARTS	16
BALL LIFT ASSEMBLY	17
BALL LIFT PARTS	18
CHIME ASSEMBLY	19
KNOCKER ASSEMBLY	20
CAM ASSEMBLY	21
CAM SWITCHES	22
TILT ASSEMBLY	23
ROLL TILT ASSEMBLY	24
PUSH BUTTON SWITCH ASSEMBLY	25
FRONT PANEL COCK ASSEMBLY	26
BALL TRACK COVER ASSEMBLY	26
FRONT WINDOW LOCK BRACKET	26
SWITCH BLADES	27
SILVER CONTACTS	27
SWITCH PARTS	28
SWITCH ASSEMBLIES	29
LAMP SOCKET STRIP	30
BALL RAIL	30
PLUNGERS	31
COIL STOP	31
COIL SLEEVE	31
COIL INSERT	31
PLASTIC LIGHT SHADE	32
POST-PLASTIC	32
ROLLOVER BRACKET	32
SCORE UNIT PARTS	33
HANDLE BEARING	33
COIN DOOR	34
PRICE LIST, ETC.	35

THUMPER BUMPER ASSEMBLY 1-12



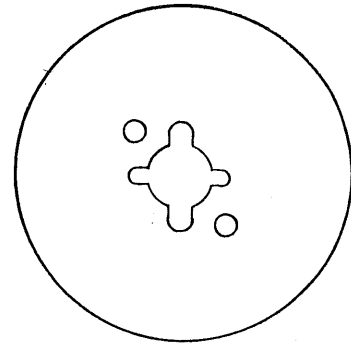
THUMPER BUMPER PARTS



3 - 17

PHENOLIC YOKE

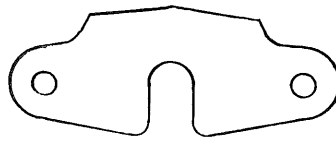
PRICE: .34



8-219

TRIM PLATTER

PRICE: .10



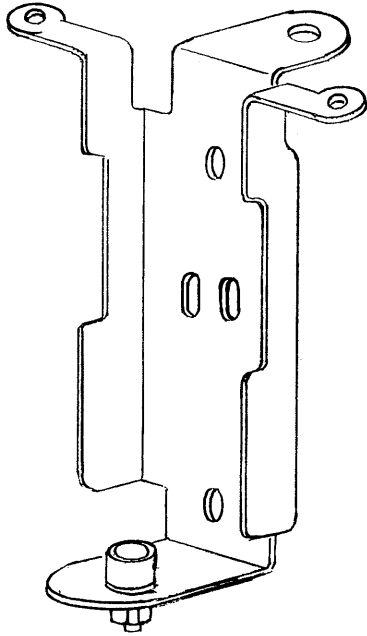
3-16

YOKE T. BUMPER

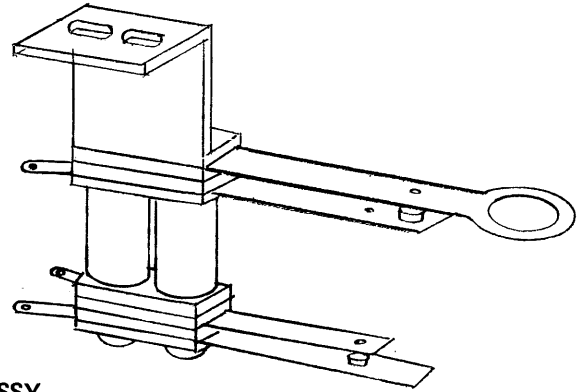
PRICE: .20

ITEM	PART NO.	DESCRIPTION	PRICE
1		# 4 x 3/8 PRHSMS	
2	8 - 201	SUNFLOWER CAP - RED	.56
3	8 - 202	SUNFLOWER CAP - YELLOW	.56
4	1 - 8	THUMPER BUMPER KICKER ASSY.	1.78
5	8 - 222	THUMPER BUMPER WAFER - RED	.10
6	8 - 223	THUMPER BUMPER WAFER - YELLOW	.10
7	8 - 221	THUMPER BUMPER BASE	.20
8	8 - 21	SPRING - THUMPER BUMPER	.02
9	3 - 16	YOKE - THUMPER BUMPER	.20
10	3 - 17	PHENOLIC YOKE - T. BUMPER	.34
11		# 6 - 32 x 1/4 LG. WHIZ LOCK	
12	2 - 16	PLUNGER - TYPE B	.56
13	1 - 10	T. BUMPER BRACKET ASSY.	1.60
14	3 - 31	T. BUMPER STOP	.90
15	1 - 165	COIL A - BROWN	1.66
16	8 - 224	COIL SLEEVE - TYPE A	.22
17	8 - 7	PLUNGER SPRING - TYPE B	.04
18		# 6 - 32 ELASTIC STOP NUT	
19	1 - 20	T. BUMPER SWITCH ASSY.	1.20
20	8 - 219	T. B. TRIM PLATTER	.10
21	8 - 220	THUMPER BODY	.30
22	9 - 14	T. B. LAMP SOCKET	.20
23	9 - 23	DISPLAY LAMP	.18
24		# 5 x 3/4 LG. POHWS	

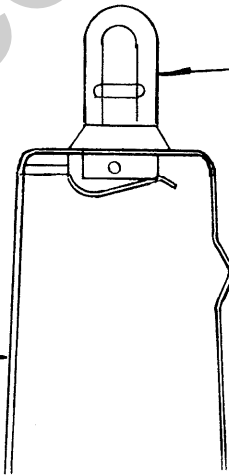
THUMPER BUMPER PARTS



T. B. BRACKET ASSY.
1 - 10
PRICE: 1.60



1 - 20
T. B. SWITCH ASSY.
PRICE: 1.20



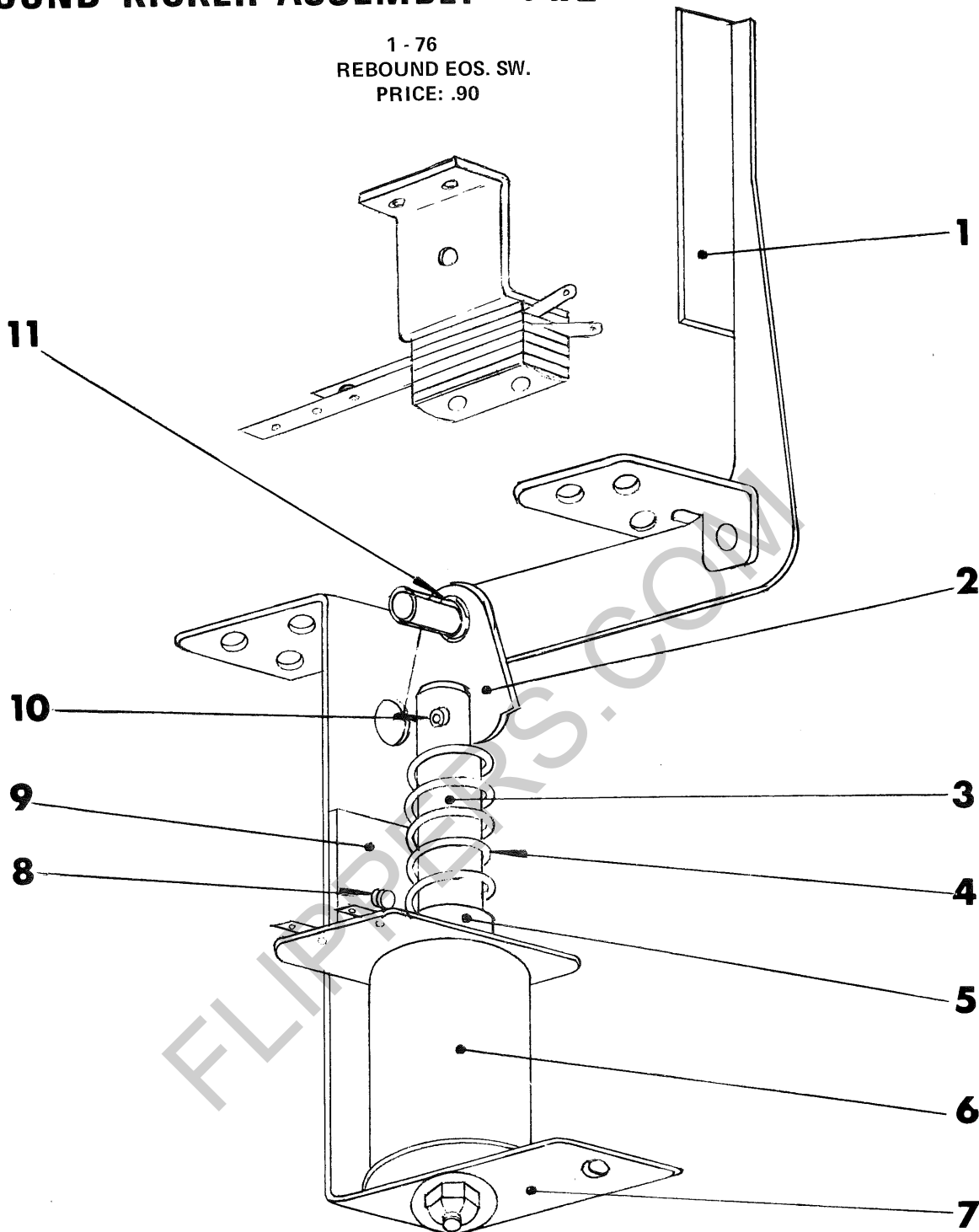
9 - 14
T. BUMPER
LAMP SOCKET
PRICE: .20

9 - 23
#44 LAMP
PRICE: .18

FLIPPERS.COM

REBOUND KICKER ASSEMBLY 1-172

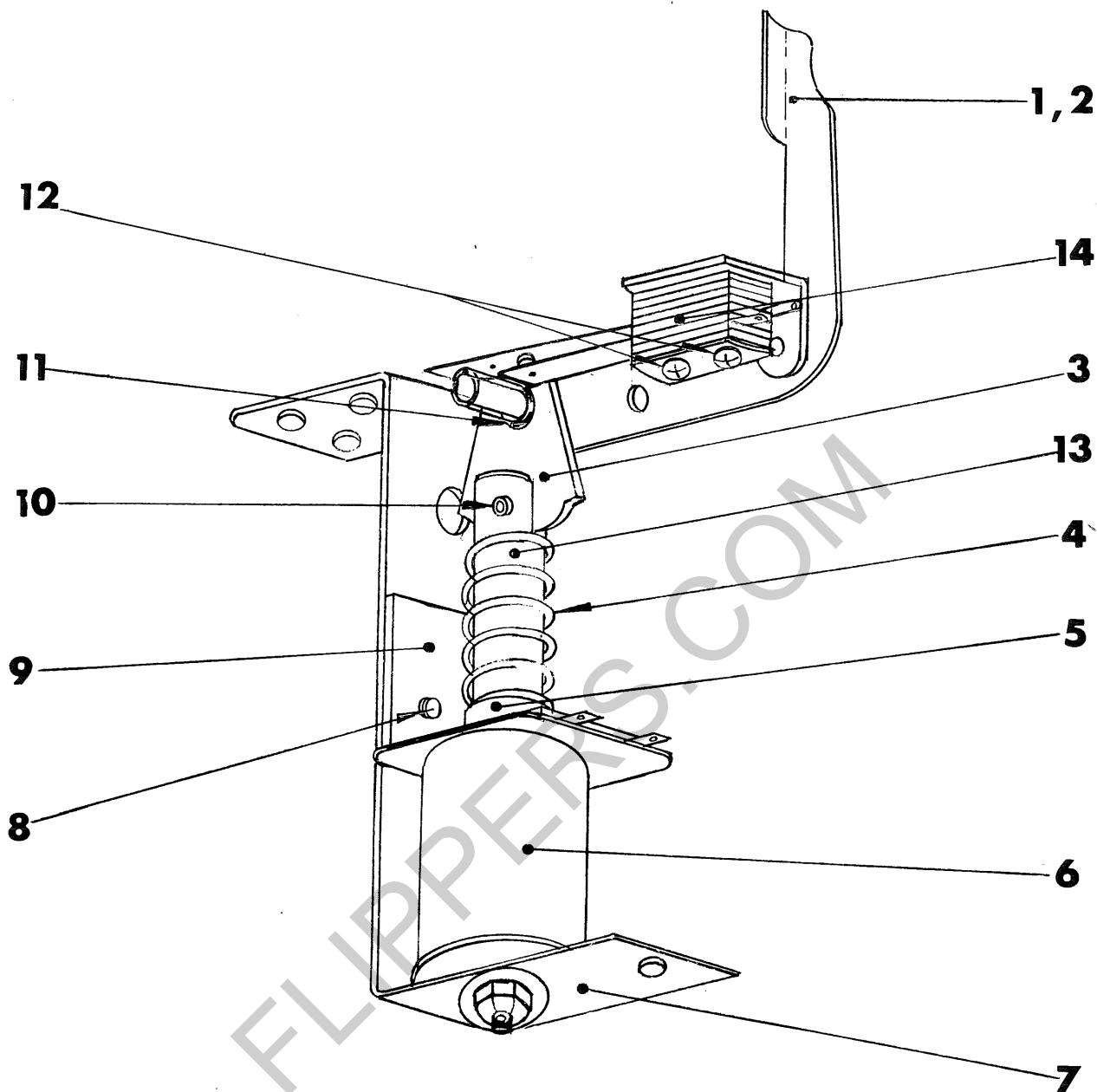
1 - 76
REBOUND EOS. SW.
PRICE: .90



ITEM	PART NO.	DESCRIPTION	PRICE
1	1 - 51	REBOUND KICKER ARM ASSY.	1.30
2	3 - 36	LINK	.30
3	2 - 21	PLUNGER TYPE A	.58
4	8 - 8	PLUNGER SPRING-TYPE A	.10
5	8 - 224	COIL SLEEVE-TYPE A	.22
6	1 - 165	COIL A - BROWN	1.66
7	1 - 42	SOLENOID BRACKET #5 with stop	1.20
8		#6 - 32 x 1/4" WHIZ LOCK	
9	3 - 35	SOLENOID BRACKET #6	.54
10		1/8 x 1/2 ROLLING PIN	
11	8 - 124	E RING	.04

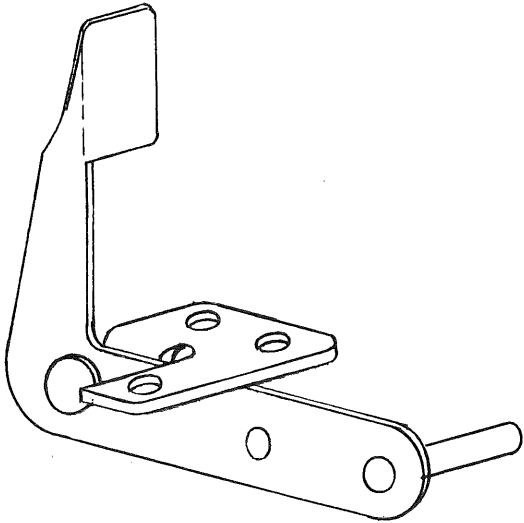
SLING SHOT KICKER ASSEMBLY

1-16 L.H.
1-39 R.H.

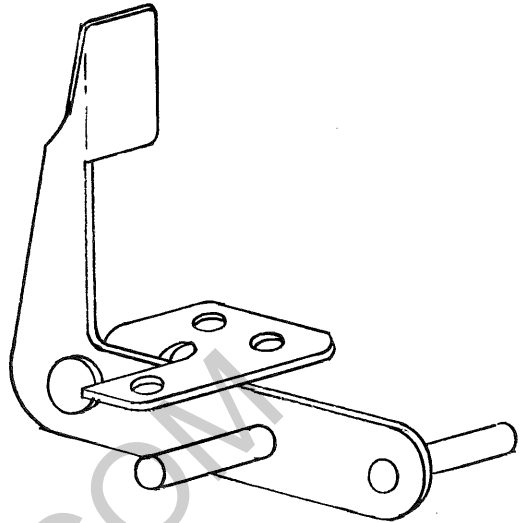


ITEM	PART NO.	DECRPTION	PRICE
1	1 - 1	LH. S.S. KICKER ARM ASSY.	1.30
2	1 - 98	RH. S.S. KICKER ARM ASSY.	1.50
3	3 - 36	PHEONLIC LINK	.30
4	8 - 8	PLUNGER SPRING-TYPE A	.04
5	8 - 224	COIL SLEEVE-TYPE A	.22
6	1 - 13	COIL A - RED	1.66
7	1 - 42	SOLENOID BRACKET #5 with stop	1.40
8		#6 - 32 x 1/4" WHIZ LOCK	
9	3 - 35	SOLENOIS BRACKET #6	.54
10		1/8 x 1/2 ROLL PIN	.02
11	8 - 124	E RING #5131 - 1B	.04
12		#4 - 40 x 3/4 PRHSMS	
13	2 - 21	PLUNGER-TYPE A	.58
14	1 - 78	KICKER E.O.S., 10S SCORE SWITCH	.66

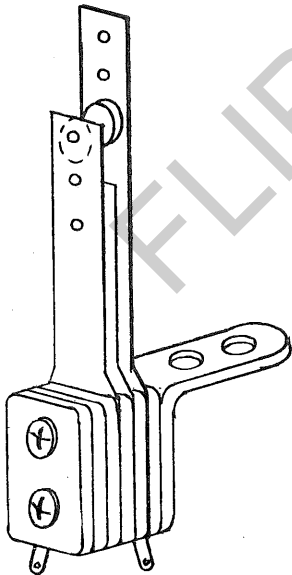
SLING SHOT KICKER PARTS



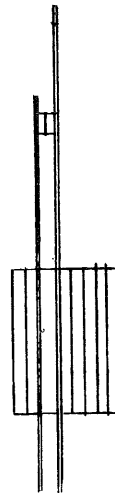
1 - 1
L.H. S.S. KICKER ARM ASSY.
PRICE: 1.30



1 - 98
R.H. S.S. KICKER ARM ASSY.
PRICE: 1.50



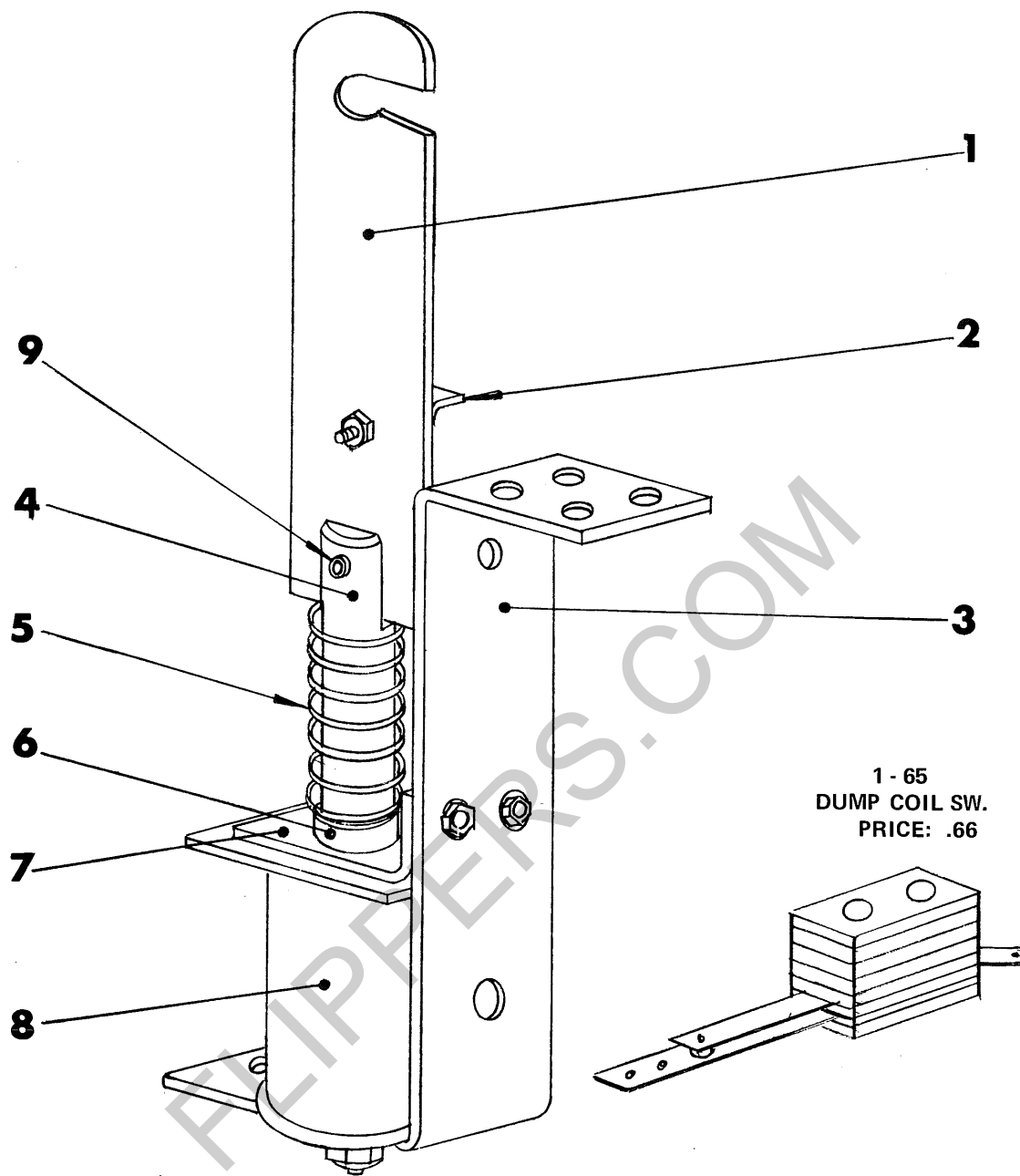
1 - 57
S.S. KICKER SWITCH ASSY.
PRICE: 1.20



1 - 78
KICKER E.O.S. 10'S
SCORE SWITCH
PRICE: .66

BALL DUMP SOLENOID ASSY.

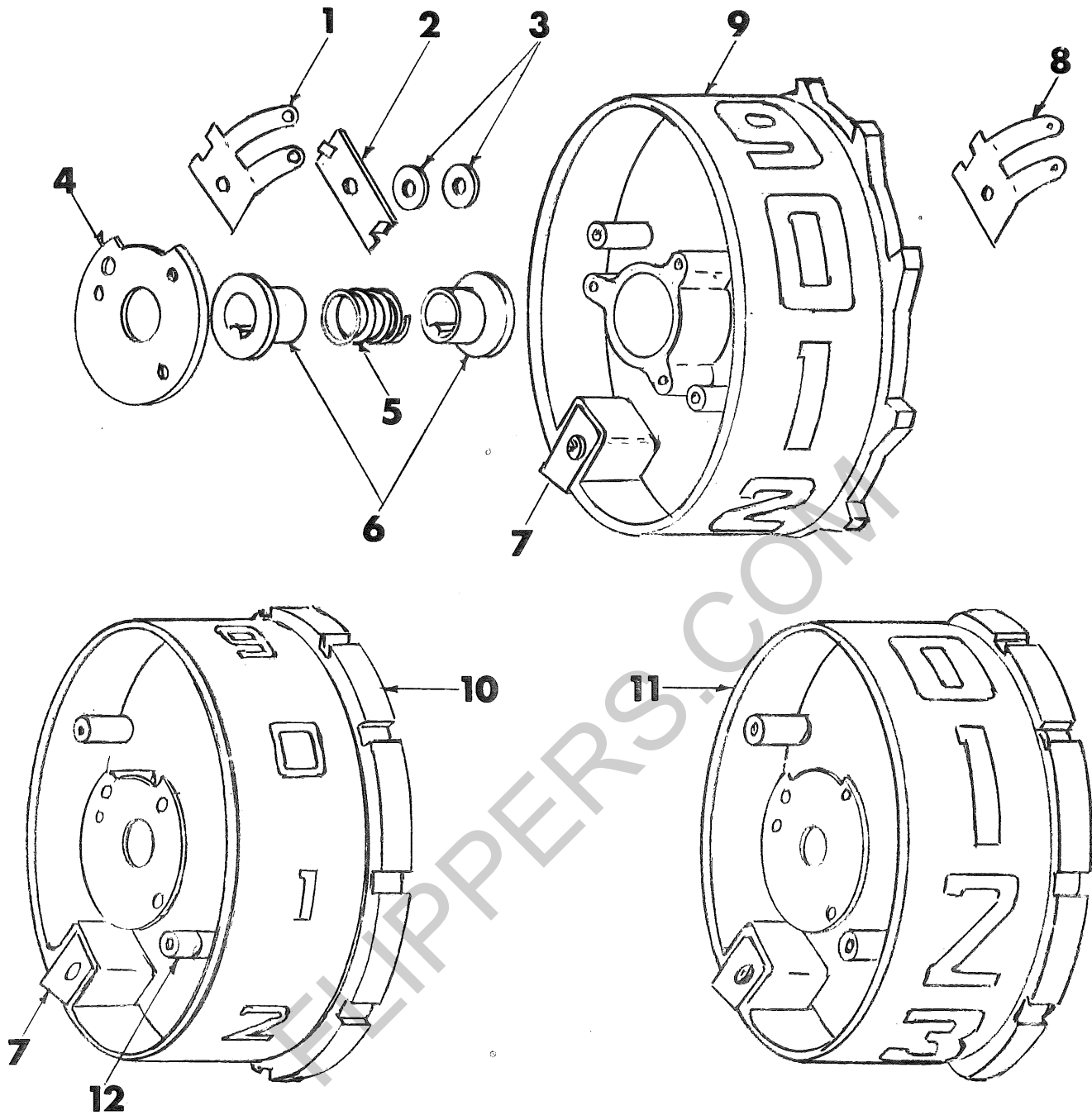
1-185



1 - 65
DUMP COIL SW.
PRICE: .66

ITEM	PART NO.	DESCRIPTION	PRICE
1	3 - 50	LINK - BALL DUMP	.42
2	3 - 24	LINK STOP - BALL DUMP	.16
3	1 - 42	SOLENOID BRACKET #5 with stop	1.20
4	2 - 21	PLUNGER - TYPE A	.58
5	8 - 8	PLUNGER SPRING - TYPE A	.04
6	8 - 224	COIL SLEEVE - TYPE A	.22
7	3 - 35	SOLENOID BRACKET #6	.54
8	1 - 13	COIL A-RED	1.66
9		1/8" x 1/2" ROLL PIN	.02

DRUM WHEELS

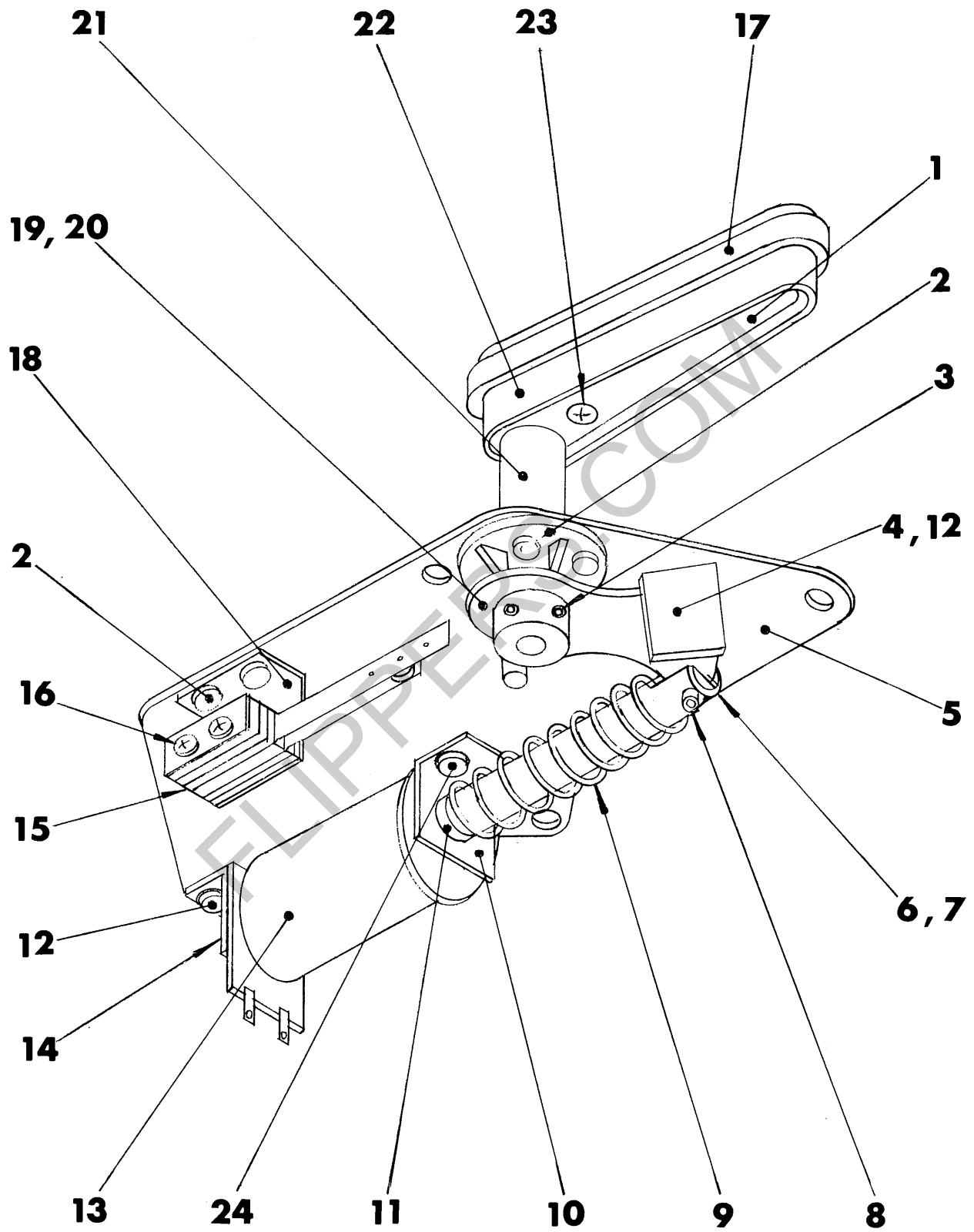


ITEM	PART NO.	DESCRIPTION	PRICE
1	1 - 521	WIPER FINGER ASSY. - REVERSE	.50
2	3 - 533	LOCK PLATE - WIPER FINGER	.30
3		WASHER	
4	3 - 130	CLUTCH SPRING RETAINER	.10
5	8 - 514	CLUTCH SPRING	.12
6	5 - 502	CLUTCH BUSHING	.10
7	5 - 506	LIFTER - ARMATURE	.04
8	1 - 520	WIPER FINGER ASSY.- D'B'L. CONTACT	.50
9	6 - 1	SCORE WHEEL	.36
10	6 - 40	CREDIT WHEEL	.36
11	6 - 25	BALL COUNT HW WHEEL	.36
12	2 - 506	CREDIT WHEEL STOP	.16

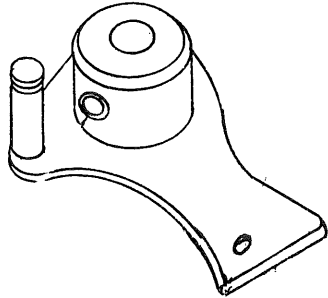
FLIPPER ASSEMBLY

R.H. 1-7

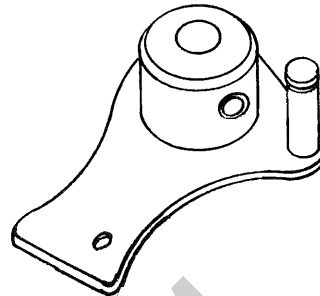
L.H. 1-3



FLIPPER PARTS



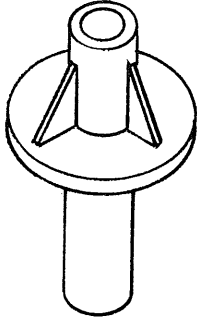
1 - 116
FLIPPER ARM ASSY.-L.H.
PRICE: 2.26



1 - 115
FLIPPER ARM ASSY.-R.H.
PRICE: 2.26

ITEM	PART NO.	DESCRIPTION	PRICE
1	1 - 14	FLIPPER SHAFT ASSY.	1.20
2	5 - 2	FLIPPER BEARING	.30
3		1/4 - 28 SET SCREW	
4	3 - 5	ACTUATOR ARM STOP - FLIPPER	.36
5	3 - 4	FLIPPER BASE PLATE	1.36
6	2 - 3	FLIPPER PLUNGER	.24
7	5 - 12	FLIPPER PLUNGER BEARING	.04
8	8 - 40	1/8 x 1/2 ROLL PIN	
9	8 - 1	COMPRESSION SPRING-FLIPPER SOLENOID	.08
10	3 - 7	SOLENOID BRACKET # 2	.46
11	8 - 224	COIL SLEEVE - TYPE A	.22
12		8 - 32 x 1/4 WHIZ LOCK	
13	1 - 43	COIL B - ORANGE	1.72
14	1 - 11	SOLENOID BRACKET # 1 with stop	1.06
15	1 - 64	FLIPPER SWITCH E.O.S.	.46
16		# 4 - 40 x 3/4" PRHMS	
17	8 - 116	FLIPPER RING (SPECIFY COLOR)	.20
18	3 - 6	SWITCH MOUNTING BRACKET # 1	.60
19	1 - 115	FLIPPER ARM ASSY. R.H.	2.26
20	1 - 116	FLIPPER ARM ASSY. L.H.	2.26
21	5 - 2	FLIPPER BEARING	.12
22	5 - 11	FLIPPER	.40
23		# 6 x 1/2" PRHMS - TYPE F	
24		# 8 - 32 x 1/4" PRH SEMS SCREW	

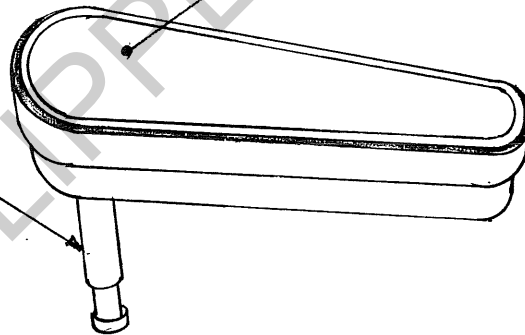
FLIPPER PARTS



FLIPPER BEARING
5 - 2
PRICE: .30



FLIPPER SWITCH E.O.S.
1 - 64
PRICE: .60

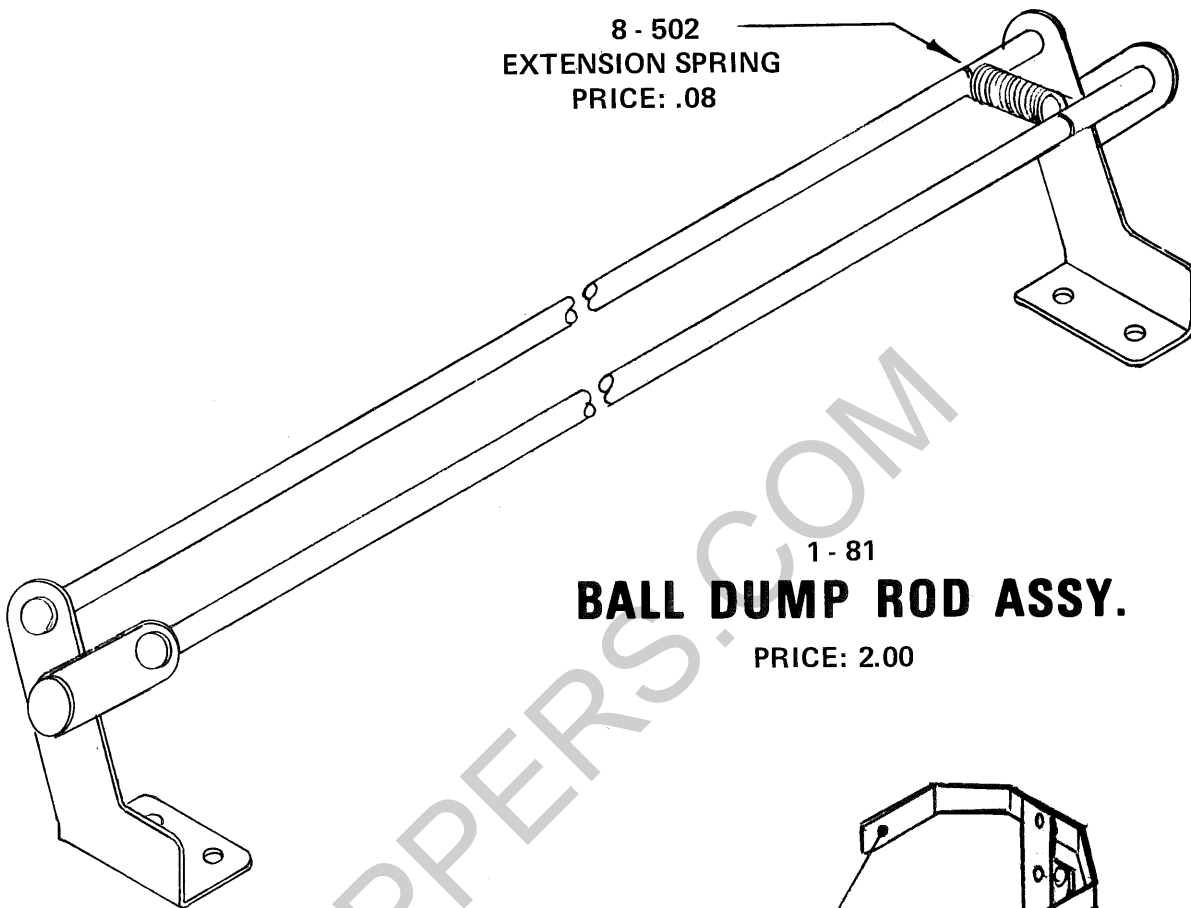


1 - 14
FLIPPER SHAFT
ASSEMBLY
PRICE: 1.20
MOUNTED TO FLIPPER
WITH #6 x 1/2 PRHMS
TYPE F

5 - 11 FLIPPER
PRICE: .40

8 - 116
FLAT RUBBER
RING — Specify Color
PRICE: .20

8 - 502
EXTENSION SPRING
PRICE: .08

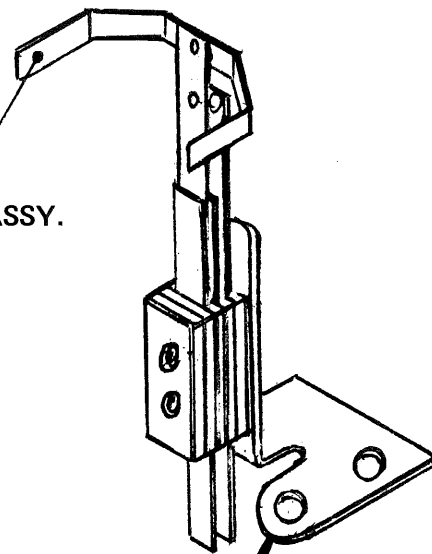


1 - 81
BALL DUMP ROD ASSY.
PRICE: 2.00

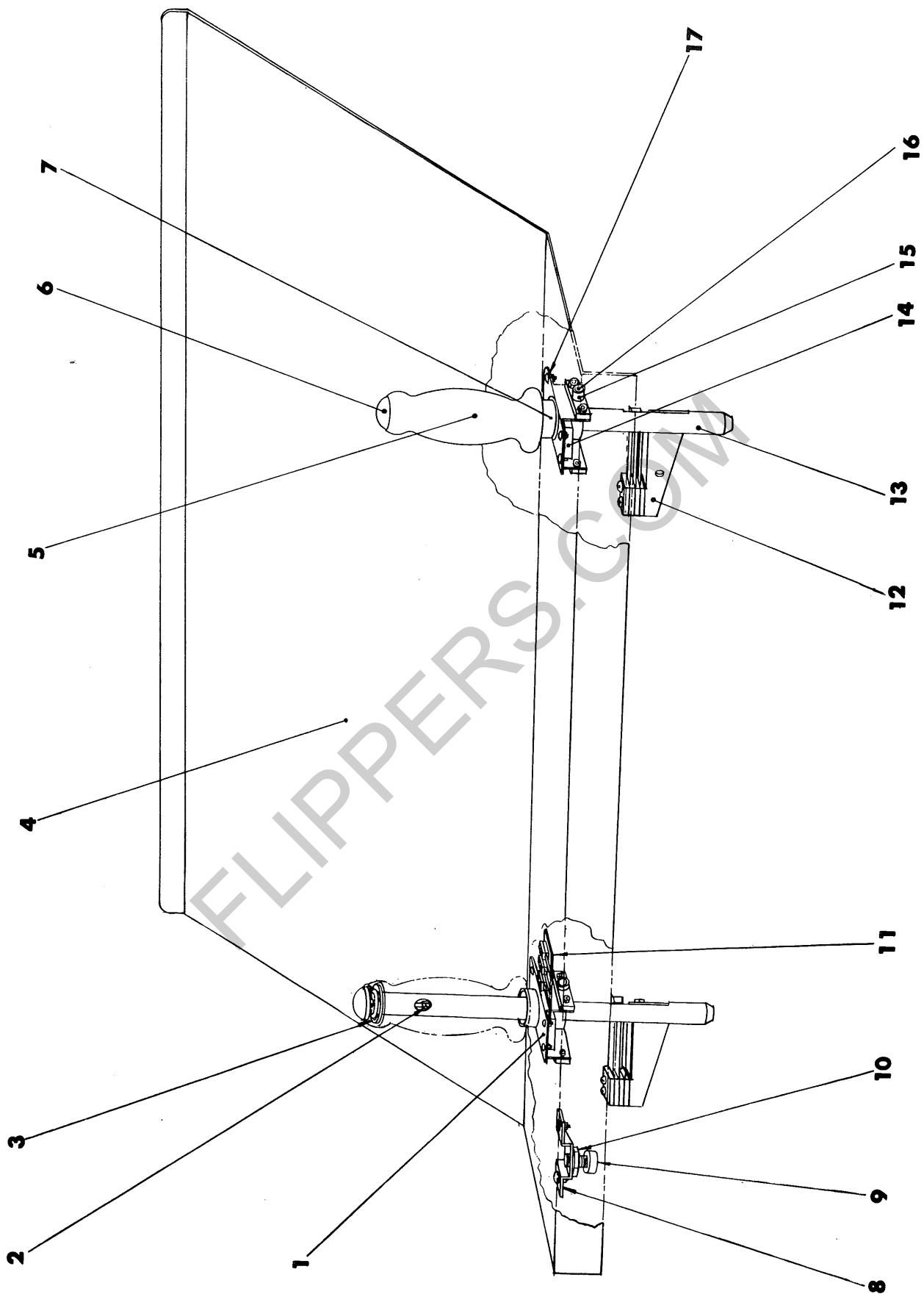
1 - 59
SWITCH COLLAR ASSY.
PRICE: .20

1 - 61
REBOUND SWITCH
WITH BRACKET
PRICE: 1.50

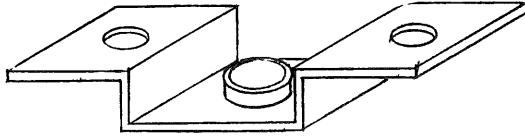
3
SWITCH BRACKET
PRICE: .56



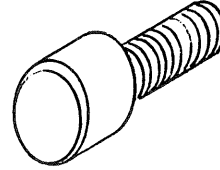
FRONT PANEL ASSEMBLY 235-104



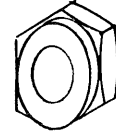
FRONT PANEL PARTS



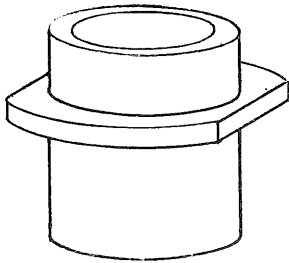
3 - 71
SCREW PLATE
PRICE: .60



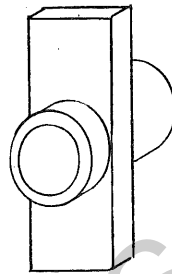
2 - 48
FRONT LATCH SCREW
PRICE: .58



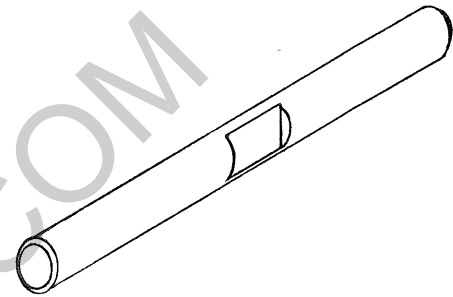
2 - 47
FRONT LATCH
NUT
PRICE: .46



5 - 29
HANDLE SPACER
PRICE: .12



5 - 36
FLANGED NYLON
BEARING
PRICE: .10

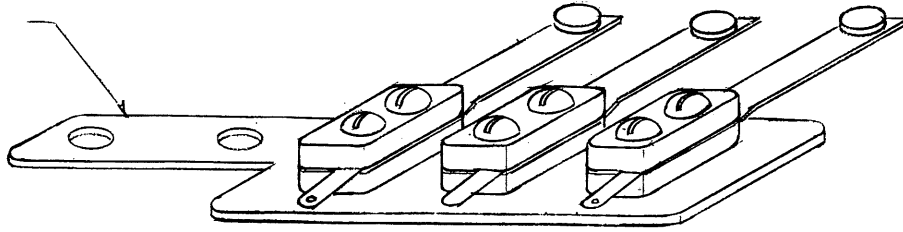


2 - 56
SHAFT - PIVOT HANDLE
PRICE: .30

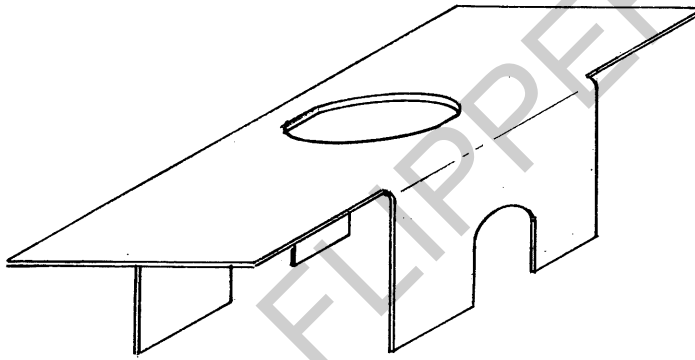
ITEM	PART NO.	DESCRIPTION	PRICE
1	3 - 38	HANDLE PIVOT BRACKET	1.20
2	3 - 77	SWITCH ACTUATOR ROD	.16
3	8 - 4	E RING X5133 - 74	.06
4	3 - 49	FRONT PLATE	2.70
5	5 - 23	HANDLE	1.50
6	5 - 24	HANDLE BUTTON	.16
7	5 - 29	HANDLE SPACER	.12
8	3 - 71	SCREW PLATE	.60
9	2 - 48	FRONT LATCH SCREW	.58
10	2 - 47	FRONT LATCH NUT	.46
11	1 - 90	FRONT PANEL SWITCH PLATE ASSY.	2.00
12	1 - 89	HANDLE SWITCH ASSY.	1.56
13	2 - 31	HANDLE SHAFT	5.86
14	8 - 16	FOAM CUSHION	.10
15	5 - 36	FLANGED NYLON BEARING	.10
16	2 - 56	SHAFT PIVOT - HANDLE	.30
17		8 - 32 x 1/4 CARRIAGE BOLT	

FRONT PANEL PARTS

3 - 28
FRONT PANEL
SW. PLATE
PRICE: .90

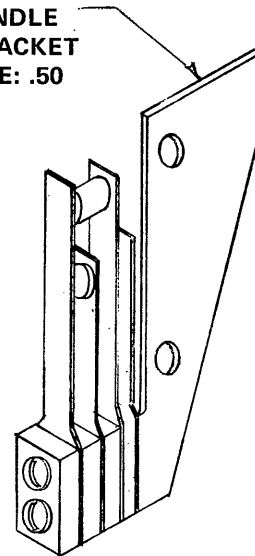


1 - 90
FRONT PANEL SWITCH PLATE ASSEMBLY
PRICE: 2.00



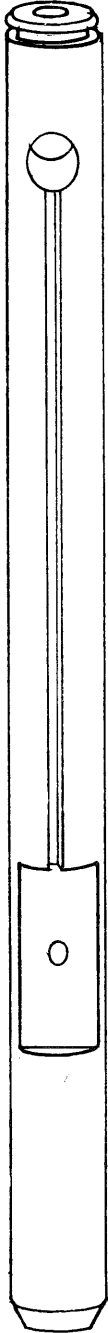
3 - 38
HANDLE PIVOT BRACKET
PRICE: 1.20

3 - 88
HANDLE
SW. BRACKET
PRICE: .50



1 - 89
HANDLE SWITCH ASSY.
PRICE: 1.56

HANDLE PARTS



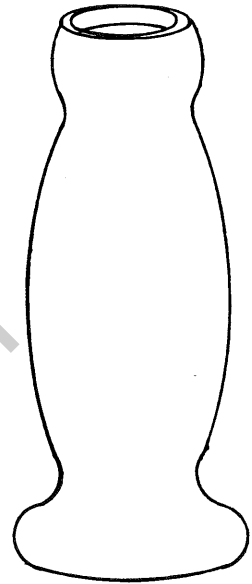
2 - 31
HANDLE SHAFT
PRICE: 5.86



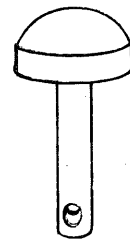
3 - 77
SWITCH
ACTUATOR ROD
PRICE: .16



E RING
8 - 4
PRICE: .06

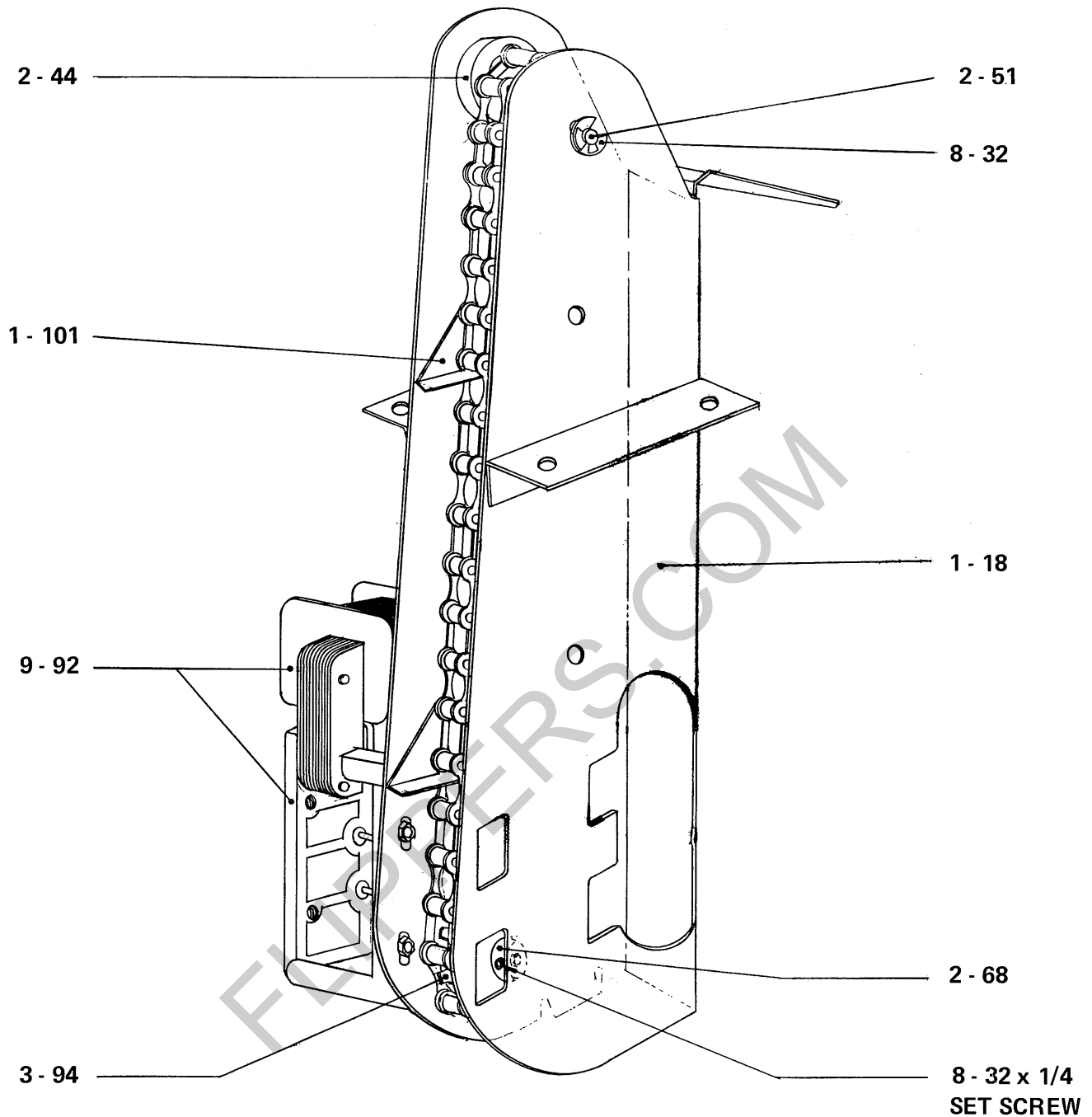


5 - 23
HANDLE
PRICE: 1.50



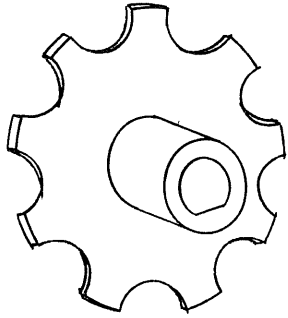
5 - 24
HANDLE BUTTON
PRICE: .16

BALL LIFT ASSEMBLY 1-126

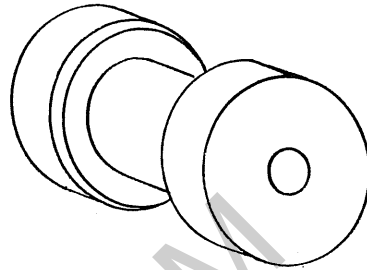


PART NO.	DESCRIPTION	PRICE
1 - 18	BALL LIFT CHUTE WELD ASSEMBLY	12.00
1 - 101	BALL LIFT CHAIN ASSEMBLY	2.60
2 - 44	BALL LIFT ROLLER	1.10
2 - 51	PIN-BALL LIFT ROLLER	.30
2 - 68	COLLAR-BALL LIFT	.30
3 - 94	BALL LIFT SPROCKET	.36
8 - 32	E RING # 5133 - 25	.04
9 - 92	BALL LIFT MOTOR	11.60

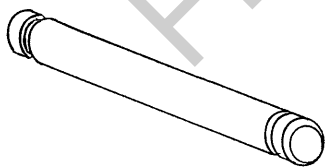
BALL LIFT PARTS



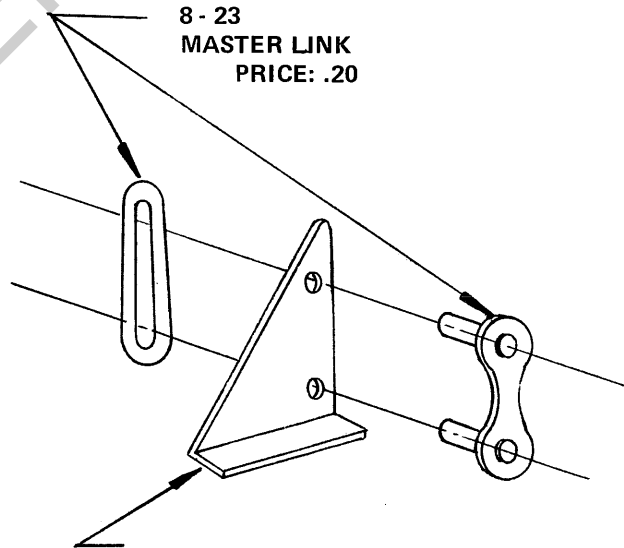
3 - 94
BALL LIFT SPROCKET
PRICE: .36



2 - 44
BALL LIFT ROLLER
PRICE: 1.10



2 - 51
PIN - BALL LIFT ROLLER
PRICE: .30

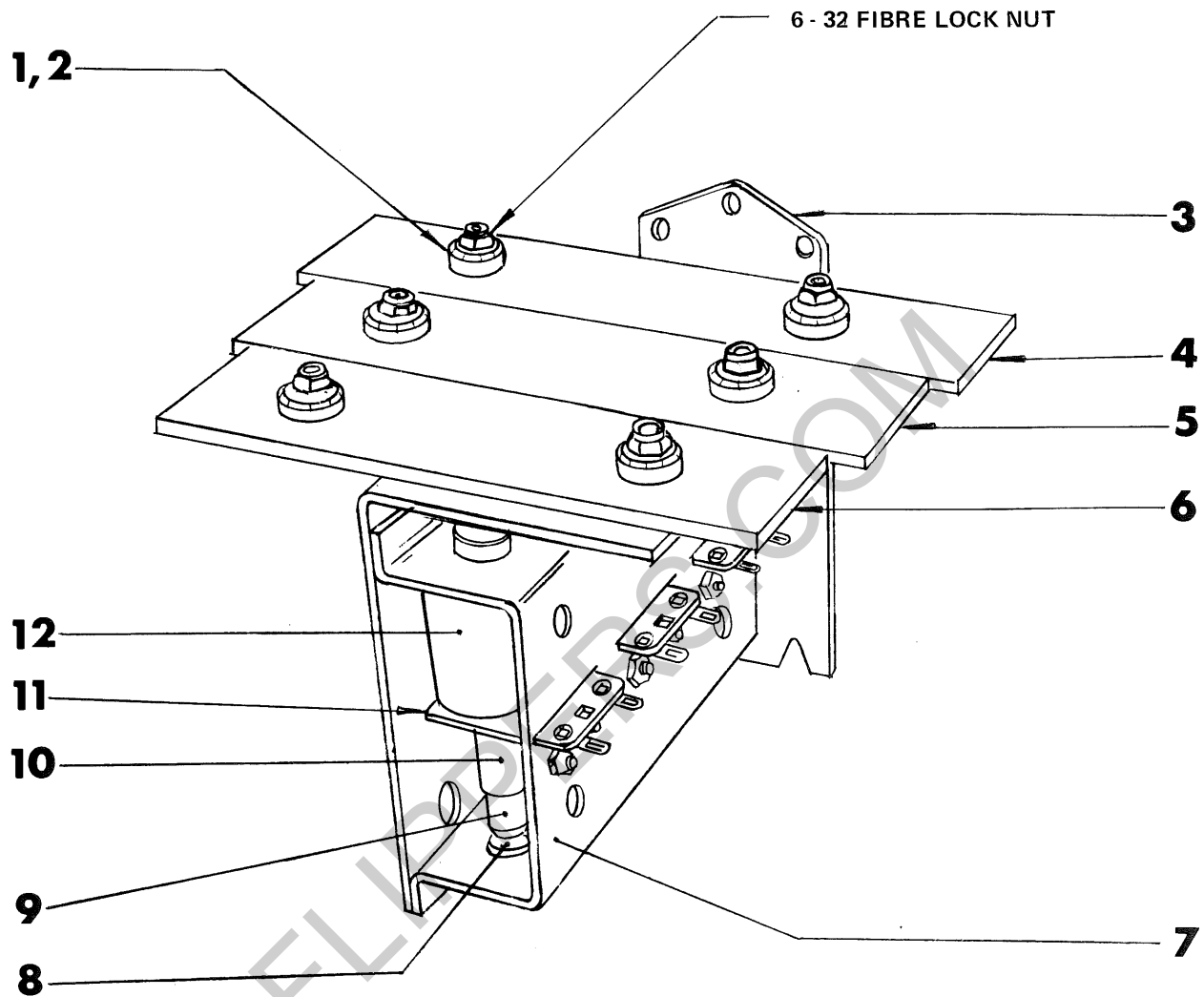


8 - 23
MASTER LINK
PRICE: .20

3 - 50
BALL DUMP LINK
PRICE: .46

CHIME ASSEMBLY

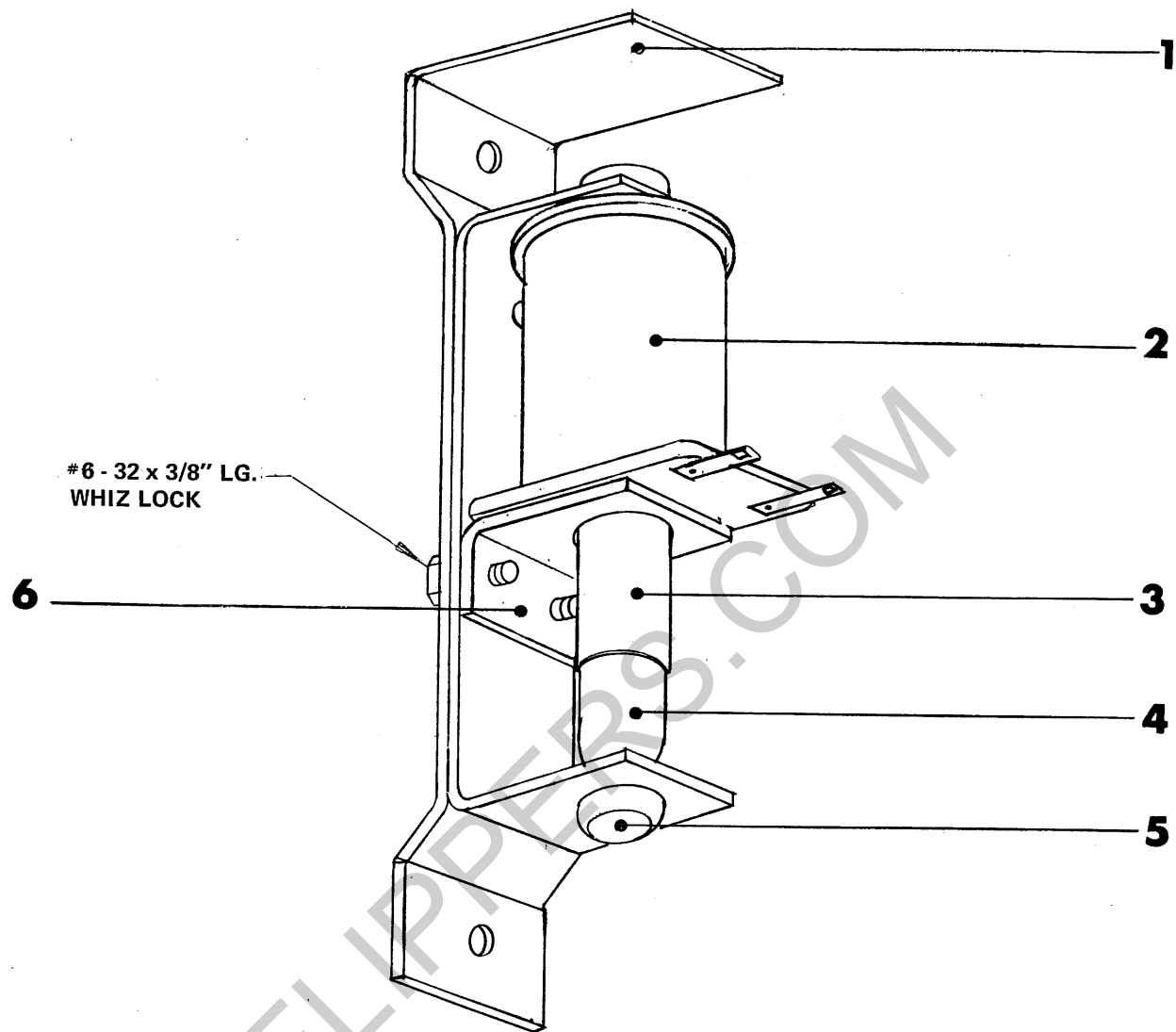
1-46



ITEM	PART NO.	DESCRIPTION	PRICE
1	8 - 119	GROMMET - BARS	.06
2	5 - 14	SOLENOID STOP INSULATOR	.04
3	3 - 12	CHIME BRACKET	1.40
4	3 - 122	CHIME BAR C	1.56
5	3 - 121	CHIME BAR B	1.50
6	3 - 120	CHIME BAR A	1.42
7	3 - 13	CHIME MOUNTING BRKT.	2.10
8	8 - 120	GROMMET - SOLENOID	.06
9	1 - 45	PLUNGER D ASSY.	.60
10	8 - 226	COIL SLEEVE - TYPE B	.22
11	3 - 29	SOLENOID BRACKET #3	.54
12	1 - 13	COIL A	1.66

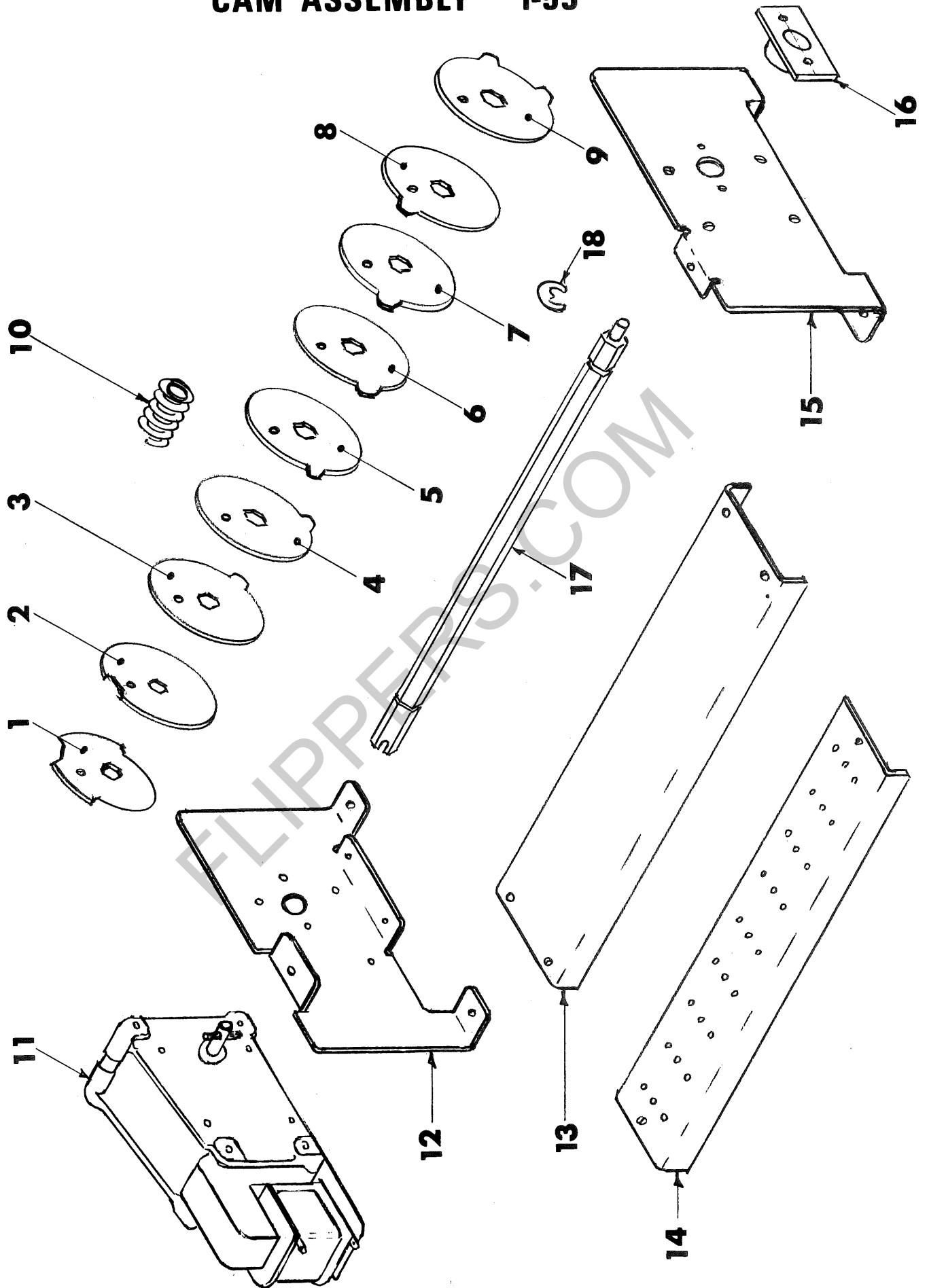
KNOCKER ASSEMBLY

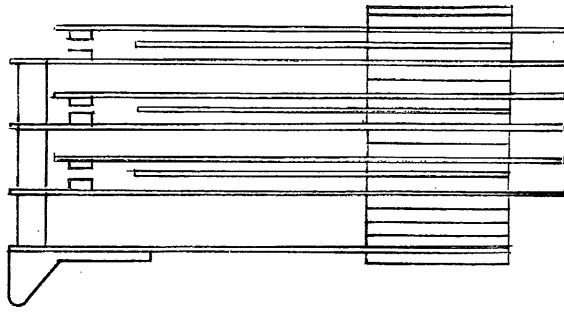
1-44



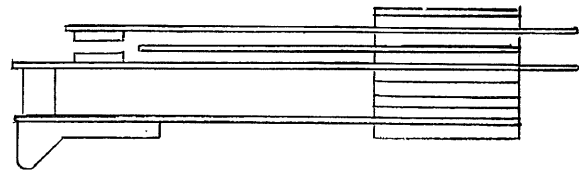
ITEM	PART NO.	DESCRIPTION	PRICE
1	1 - 191	KNOCKER BRACKET ASSY.	2.00
2	1 - 13	COIL A	1.66
3	8 - 226	COIL SLEEVE-TYPE B	.22
4	1 - 45	PLUNGER D ASSY.	.60
5	8 - 120	GROMMET - SOLENOID	.06
6	3 - 29	SOLENOID BRACKET #3	.54

CAM ASSEMBLY 1-53

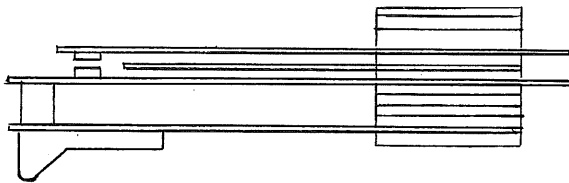




SWITCH - CAM F, H
1 - 73
PRICE: 2.60



SWITCH - CAM A
1 - 71
PRICE: 1.10



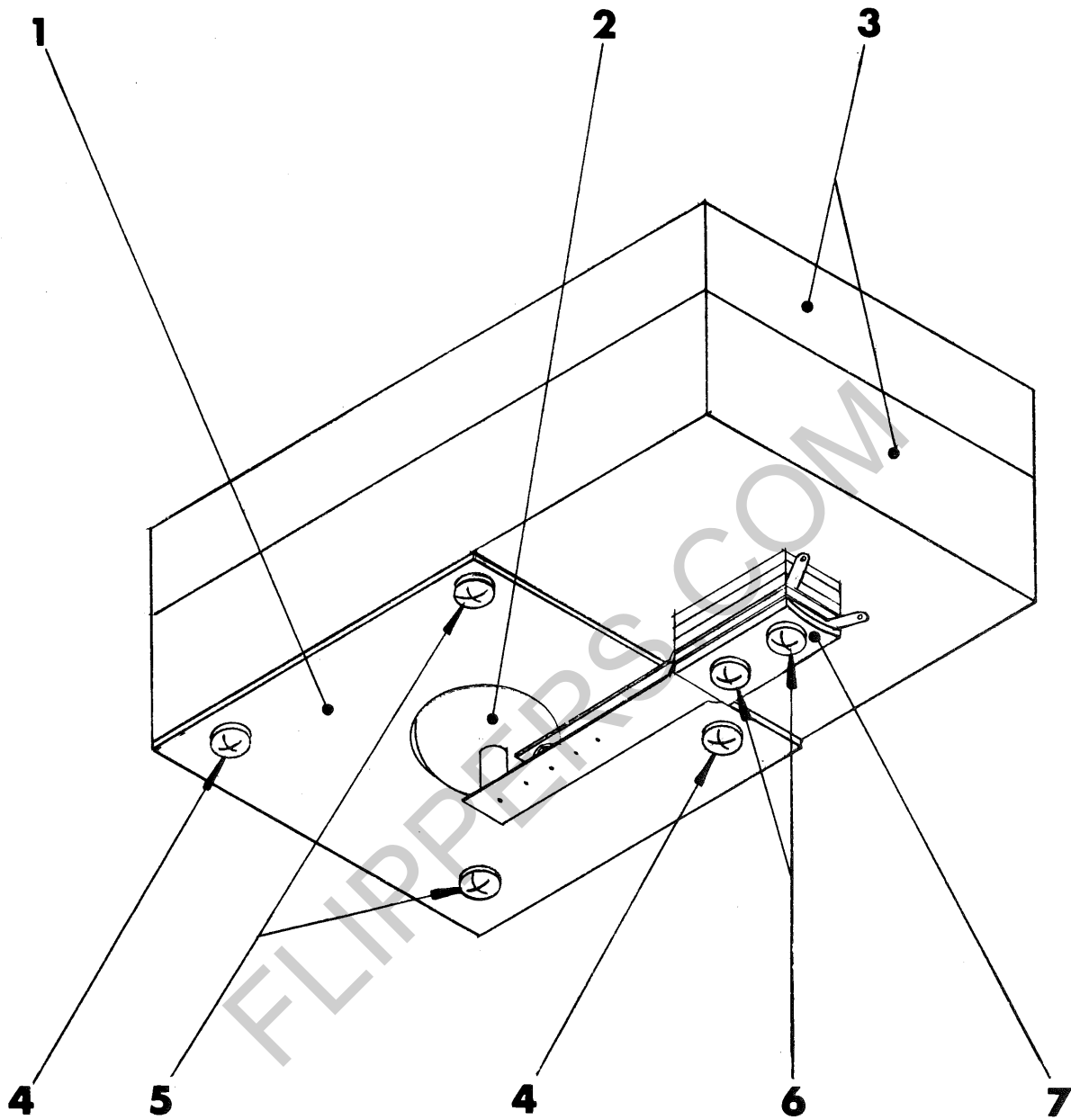
SWITCH - CAM B, C, D
1 - 72
PRICE: 1.20



SWITCH E, G, J
1 - 74
PRICE: 1.80

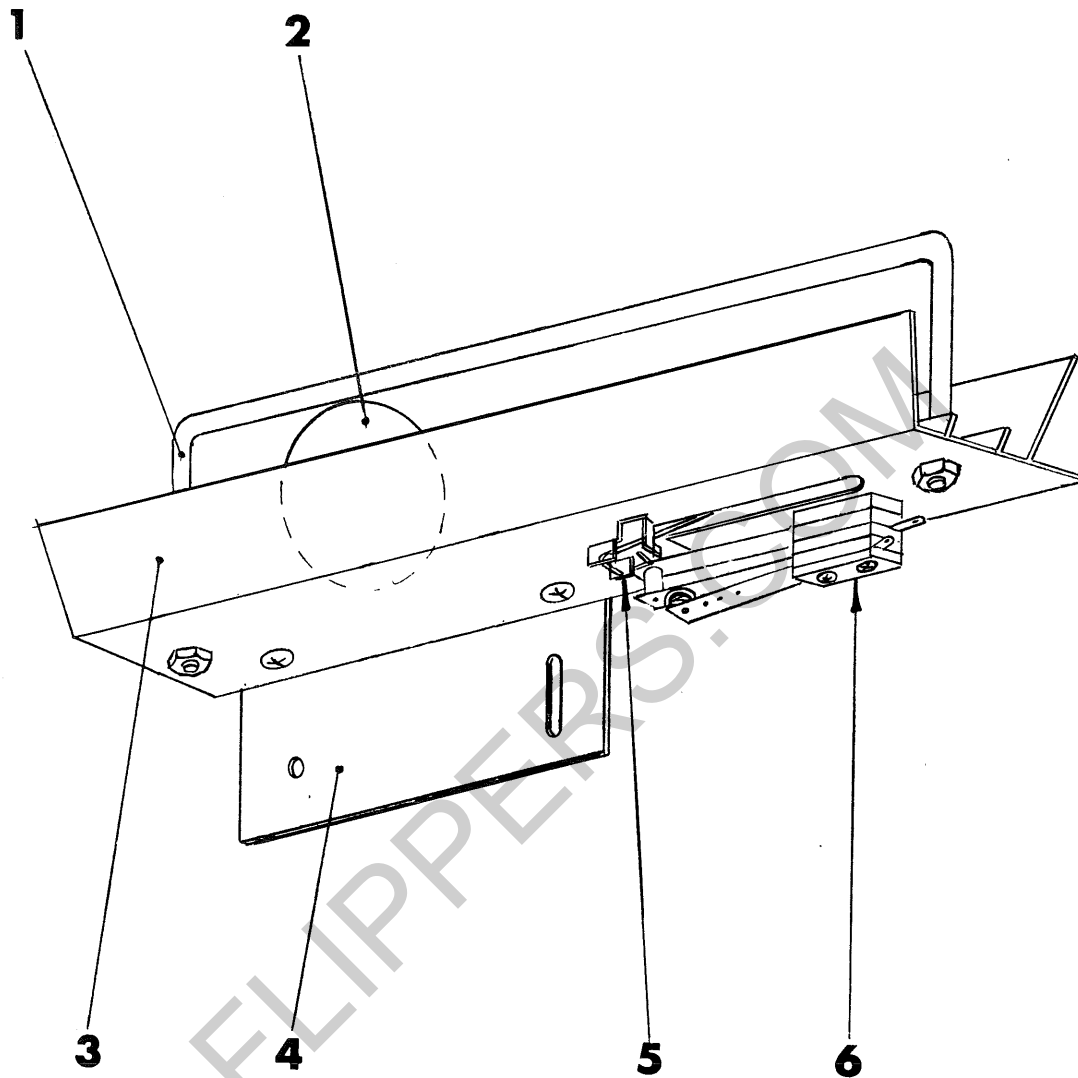
ITEM	PART NO.	DESCRIPTION	PRICE
1	3 - 101	CAM A	.46
2	3 - 102	CAM B	.46
3	3 - 103	CAM C	.46
4	3 - 104	CAM D	.46
5	3 - 105	CAM E	.46
6	3 - 106	CAM F	.46
7	3 - 107	CAM G	.46
8	3 - 108	CAM H	.46
9	3 - 109	CAM J	.46
10	8 - 2	SPRING	.04
11	9 - 93	MOTOR 28RPM 24 VDC	11.60
12	3 - 80	SIDE PLATE R.H.	1.46
13	3 - 81	CONNECTING PLATE	1.30
14	3 - 82	SWITCH PLATE	2.50
15	3 - 80	SIDE PLATE L.H.	1.46
16	3 - 97	FLANGED NYLON BEARING	.26
17	2 - 58	HEX SHAFT	1.40
18	8 - 33	E RING	.04

TILT ASSEMBLY 1-159



ITEM	PART NO.	DESCRIPTION	PRICE
1	3 - 27	TILT PLATE	.36
2	8 - 13	STEEL BALL	.28
3	1 - 152	TILT BLOCK ASSEMBLY	.50
4		# 8 x 1 5/8 LG. PRHSMS	
5		# 8 x 3/8 LG. PRHSMS	
6		# 5 x 3/4 LG. WOOD SCREW	
7	1 - 48	TILT SWITCH	.66

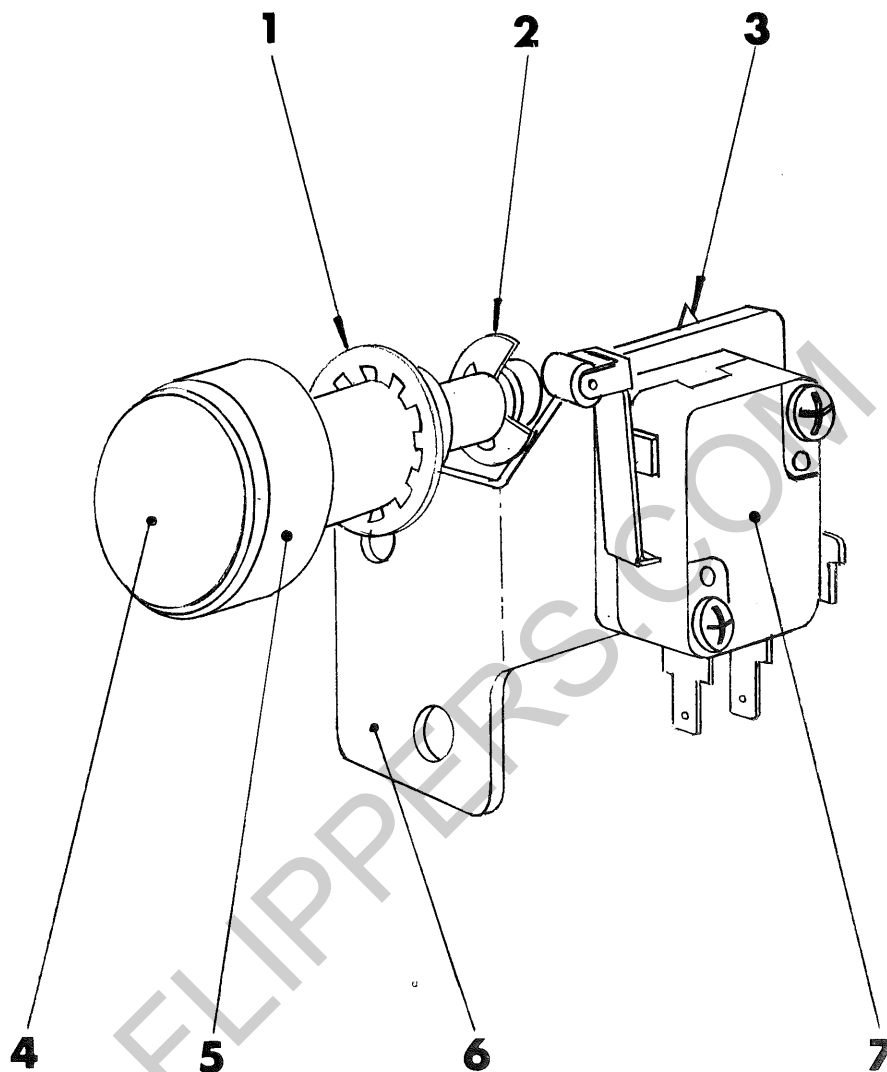
ROLL TILT ASSEMBLY 1-186



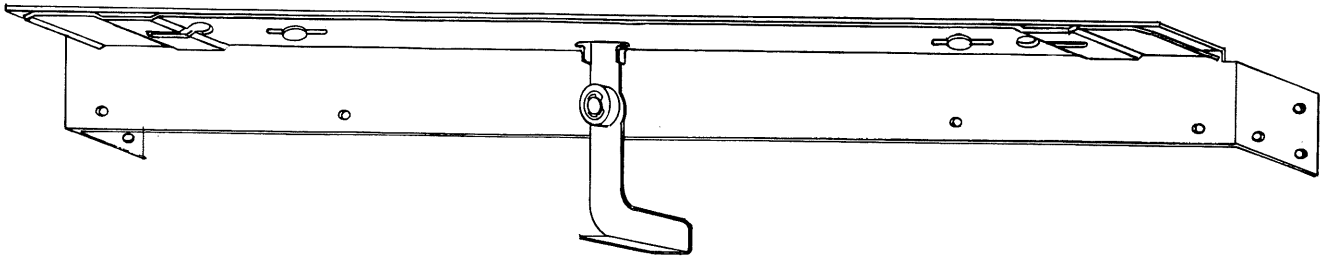
ITEM	PART NO.	DESCRIPTION	PRICE
1	8 - 58	RAIL - ROLL TILT	.80
2	8 - 13	STEEL BALL 1-1/16" DIA.	.28
3	3 - 178	TRACK - ROLL TILT	2.20
4	3 - 179	MOUNTING BRACKET .	.36
5	1 - 188	ROLLOVER ASSY. - ROLL TILT	.40
6	1 - 187	ROLL TILT SWITCH	.80

PUSH BUTTON SWITCH ASSY.

1-25



ITEM	PART NO.	DESCRIPTION	PRICE
1	8 - 50	PUSH ON RETAINER	.04
2	8 - 34	E - RING	.04
3		4 - 40 NUT BAR	
4	5 - 7	PUSH BUTTON	.30
5	2 - 35	PUSH BUTTON JACKET	.40
6	3 - 40	SWITCH MOUNT	1.10
7	9 - 3	MICRO SWITCH	1.20



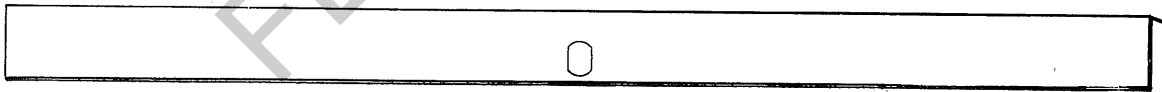
1 - 17 FRONT PANEL LOCK ASSEMBLY

PRICE: 12.00



1 - 35 BALL TRACK COVER ASSEMBLY

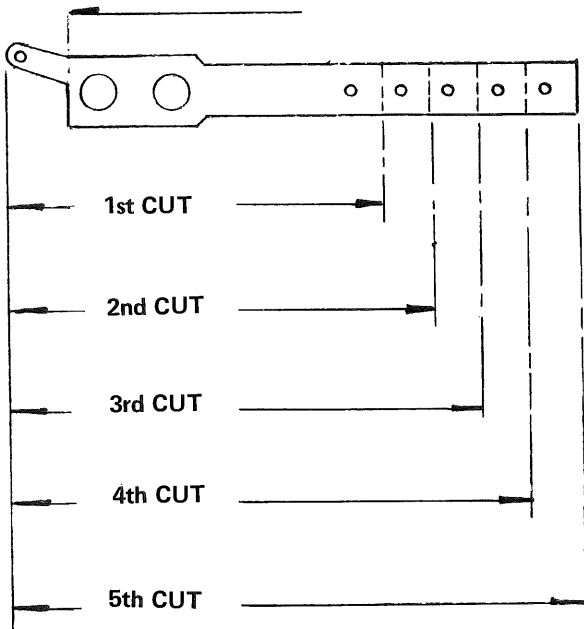
PRICE: 5.00



3 - 85 FRONT WINDOW LOCK BRACKET

PRICE: 2.70

**3/8" MOUNTING CENTERS
LESS TAIL**

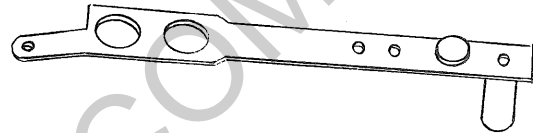


When ordering switch blades with points or lifter installed, specify:

Blade number,
Point number,
Point facing up or down,
Point location,
Lifter number,
Lifter facing up or down,
Lifter location.

EXAMPLE:

To obtain a .010 4th cut switch blade with tail, large point in 3rd hole facing up, a 5/16" long nylon lifter in the 4th hole facing down. (Hold blade in manner shown below.)

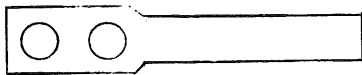


TO WRITE ORDER:

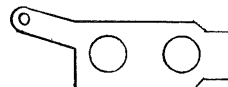
3 - 159, 8 - 11 Up 3rd & 8 - 255 Down 4th

BLADE THICKNESS		1st CUT	2nd CUT	3rd CUT	4th CUT	5th CUT
.008	With Tail			3 - 55	3 - 128	3 - 56
	Less Tail			3 - 136		3 - 132
.010	With Tail		3 - 52	3 - 162	3 - 159	3 - 161
	Less Tail					3 - 158
.016	With Tail	3 - 51	3 - 146	3 - 170		3 - 149
	Less Tail	3 - 135		3 - 171		3 - 148

PRICE: .10

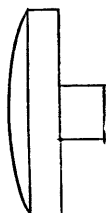


BACKING BLADE
3 - 123
PRICE: .10

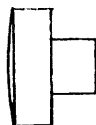


SOLDER LUG BLADE
3 - 168
PRICE: .10

**SILVER CONTACT POINTS
(SHOWN OVERSIZE)**



.215 DIA.
8 - 11
PRICE: .10



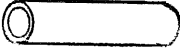
.125 DIA.
8 - 12
PRICE: .06



CAM FOLLOWER
5 - 30
PRICE: .06

SWITCH PARTS


SWITCH INSULATOR
PRICE: .04




LENGTH	PART NO.
.375	8 - 231
.437	8 - 232
.500	8 - 230
.562	8 - 233
.625	8 - 235
.687	8 - 239
.750	8 - 236
.812	8 - 240
.875	8 - 241
.937	8 - 241
1.000	8 - 229
1.062	8 - 237
1.125	
1.250	

SWITCH SPACERS
PRICE: .04

TIGHT



LOOSE

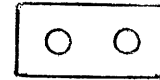


THICKNESS	PART NO.	THICKNESS	PART NO.
.031	8 - 257	.031	8 - 248
.062	8 - 250	.062	8 - 249
.093	8 - 245	.093	8 - 247

SWITCH COVER PLATES
PRICE: .06

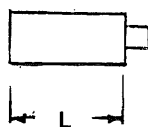


3 - 58
PRICE: .06

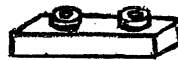


3 - 84
PRICE: .06

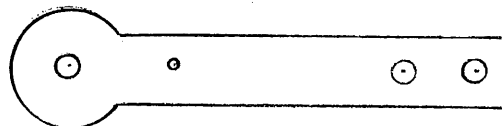
SWITCH BLADE LIFTER - NYLON
PRICE: .04



L	PART NO.
.156	8 - 251
.187	8 - 252
.218	8 - 253
.250	8 - 254
.281	8 - 243
.312	8 - 255
.375	8 - 256
.343	8 - 258

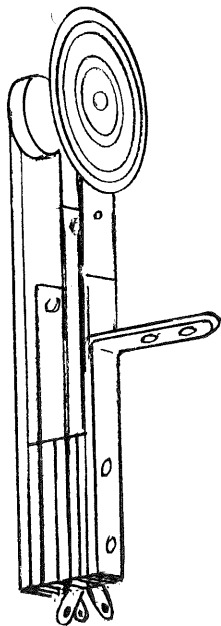


5 - 3
NYLON SWITCH
BLADE SEPARATOR
PRICE: .08

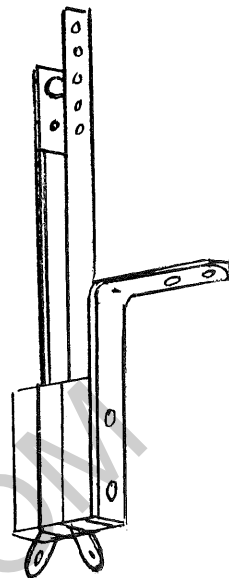


1 - 9 TARGET SW. BLADE
WITH POINT
PRICE: .36

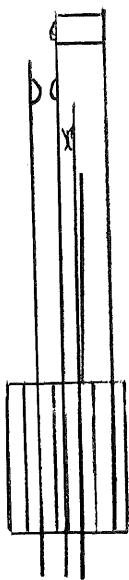
SWITCH ASSEMBLIES



TARGET SWITCH
1 - 52
PRICE: 2.30



TYPE 'B' SWITCH
1 - 28
PRICE: 1.20



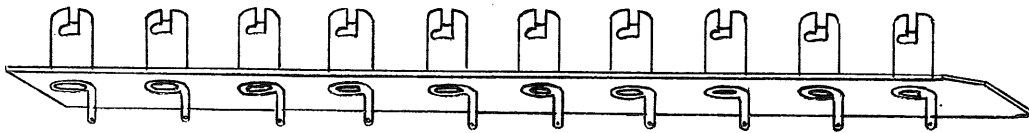
BALL COUNT SWITCH
1 - 95
PRICE: 1.40



ROLLOVER SWITCH
1 - 32
PRICE: 1.40

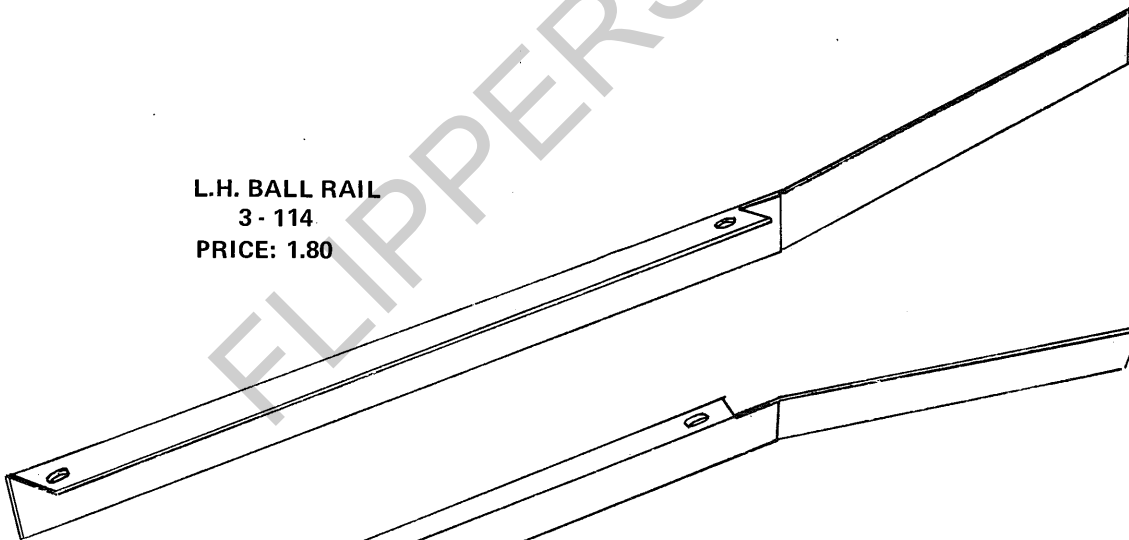


TILT RELEASE SWITCH
1 - 91
PRICE: 1.00

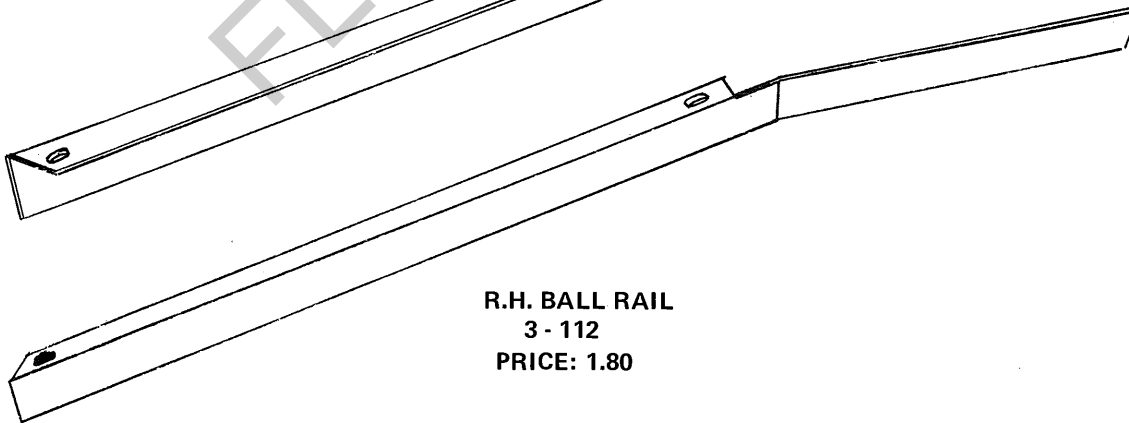


LAMP SOCKET STRIP
1 - 102
PRICE: 3.20

L.H. BALL RAIL
3 - 114
PRICE: 1.80



R.H. BALL RAIL
3 - 112
PRICE: 1.80



PLUNGERS, COIL STOP, SLEEVES



PLUNGER - TYPE A
2 - 21
PRICE: .80



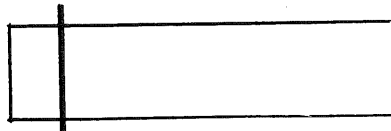
PLUNGER ASSY - TYPE D
1 - 45
PRICE: 1.20



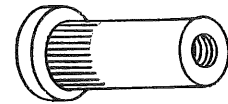
PLUNGER - TYPE B
2 - 16
PRICE: .56



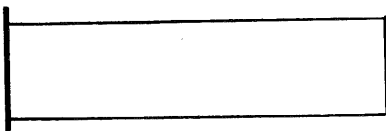
PLUNGER - TYPE C
2 - 3
PRICE: .80



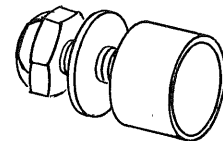
COIL SLEEVE - TYPE A
8 - 224
PRICE: .22



INSERT - SCORE COIL
2 - 504
PRICE: .40

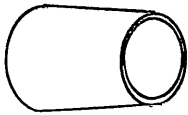


COIL SLEEVE - TYPE B
8 - 226
PRICE: .22

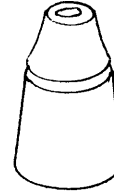


COIL STOP
1 - 50
PRICE: .66

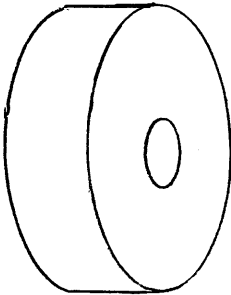
FLIPPERS.COM



LAMP REFLECTOR
5 - 1
PRICE: .06



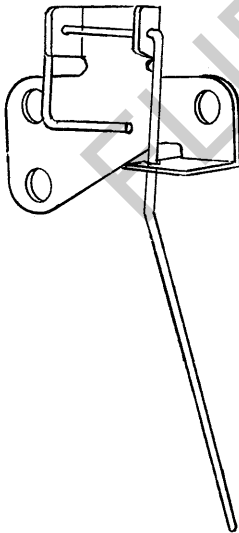
PLASTIC POST
8 - 200
PRICE: .12



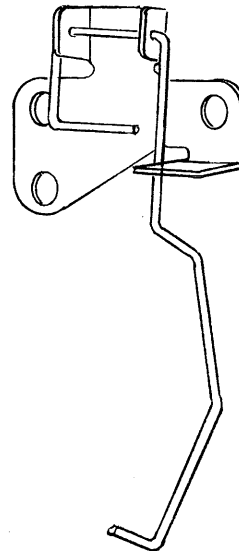
REBOUND RUBBER
8 - 121
PRICE: .30



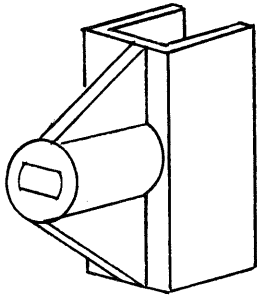
POST FASTENING SCREW AND CAP
8 - 41 8 - 27
PRICE: .20 PRICE: .04



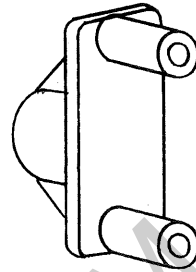
ROLLOVER BRKT - ROLL TILT
1 - 166
PRICE: .40



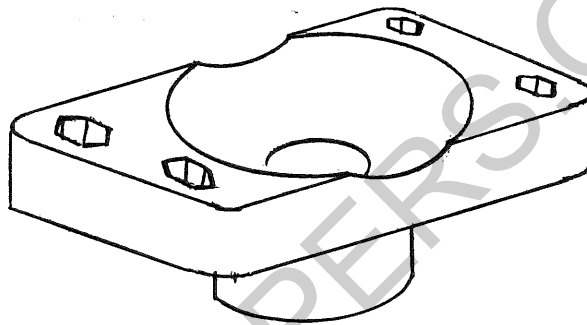
ROLLOVER BRACKET
1 - 49
PRICE: .46



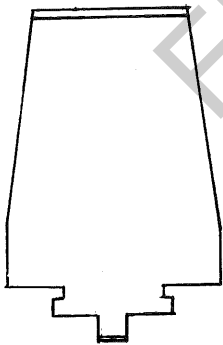
FEMALE COUPLING
5 - 25
PRICE: .28



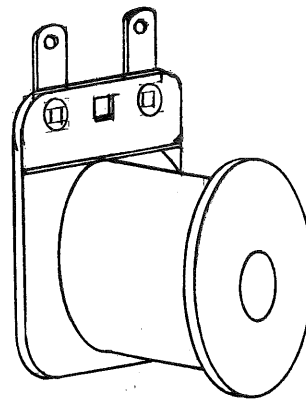
MALE COUPLING
5 - 21
PRICE: .28



HANDLE BEARING
5 - 5
PRICE: .26

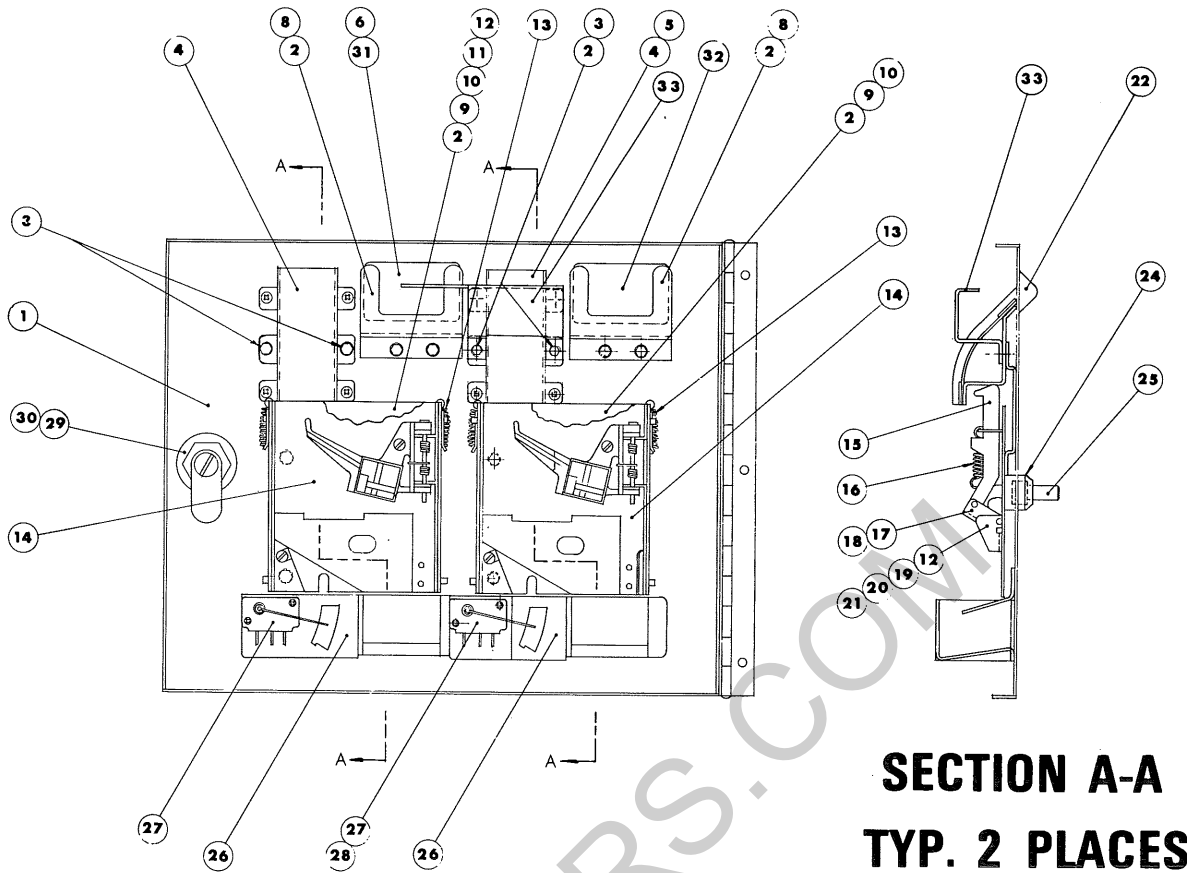


ARMATURE
3 - 504
PRICE: .30



SCORE COIL 45
9 - 17
PRICE: 1.08

COIN DOOR



**SECTION A-A
TYP. 2 PLACES**

ITEM	PART NO.	DESCRIPTION	PRICE
1	1 - 502	COIN DOOR WELD ASSY.	15.00
3	1 - 503	COIN CHUTE WELD ASSY.	1.50
4	1 - 513	COIN CHUTE TRACK	1.50
6	6 - 23	COIN PRICE PLATE	.22
8	3 - 509	COIN PRICE BRACKET	.90
9	3 - 508	COIN REJECTOR BRACKET	1.80
10	3 - 517	COIN REJECTOR LOCK	.46
13	8 - 501	EXTENSION SPRING	.12
14	8 - 516	COIN REJECTOR	11.70
15	3 - 518	COIN REJECTOR BRACKET 'C'	.60
16	8 - 502	EXT. SPRING	.08
17	3 - 519	COIN REJECTOR BRACKET 'B'	.76
18	2 - 513	PIN-COIN REJECTOR BRACKET	.36
19	3 - 516	COIN REJECTOR BRACKET 'A'	.76
20	2 - 512	PIN-COIN REJECTOR BRACKET 'B'	.26
22	3 - 514	COIN INSERT PLATE	.76
24	2 - 510	COIN RETURN BUSHING	.56
25	2 - 511	COIN BUTTON	.60
26	8 - 503	SWITCH MOUNT PLATE	
27	9 - 9	COIN MICRO SWITCH	2.20
29	8 - 45	2 K LOCK ASSEMBLY	2.00
30	3 - 154	LOCK CAM	.46

SCORE UNIT PARTS

PART NO.	DESCRIPTION	PRICE
3-65	SCORE CHANNEL	\$ 8.00
9-25	LAMP# 4416
5-1	LAMP REFLECTOR54
1-102	LAMP SOCKET ASSEMBLY	3.00
9-21	LAMP# 5518
9-5	LAMP SOCKET SHOT OFFSET16
3-531	SCORE MOTOR BRACKET90
5-25	FEMALE COUPLING46
5-21	MALE COUPLING46
1-511	SCORE BRACKET ASSEMBLY L.H.	1.50
1-511	SCORE BRACKET ASSEMBLY R.H.	1.50
3-525	STOP- CREDIT WHEEL60
3-67	ARMATURE BRACKET - SHORT	1.06
3-66	ARMATURE BRACKET - LONG	1.66
9-91	SCORE MOTOR	21.30
5-503	END BUSHING46
5-509	SPACER 3/8 WITH SET SCREW76
2-46	SCORE WHEEL SHAFT	3.30
2-49	CREDIT WHEEL SHAFT	3.00
2-506	CREDIT WHEEL STOP12
	DRUM WHEELS (SEE PAGE 8)	
9-79	P.C.B. 001B - MATCH FEATURE	1.68
9-80	P.C.B. 002B - BALLS PER GAME ADJ.	1.68
9-81	P.C.B. 019A - POINT RELAY ADJ.	1.68
9-82	P.C.B. 020A - POINT RELAY ADJ.	1.68
9-82	P.C.B. 018A - LIGHTED FEATURE	2.60
9-17	SCORE COIL	1.08
3-504	ARMATURE PLATE30
8-511	ARMATURE SPRING24
5-503	BEARING - P.C.B.72
8-515	PUSH ON RETAINING RING P.C.B.16
9-16	LAMP - FLASHING24

CABINET PARTS

PART NO.	DESCRIPTION	PRICE
1-193	STEEL LEG - PAINTED	6.00
1-193	STEEL LEG - PLATED	6.00
6-4	SCREENED PLEXIGLASS	26.50
6-2	MIRROR 2 WAY 24 x 28	42.00
3-522	COIN DOOR FRAME - PAINTED	5.26
3-522	COIN DOOR FRAME - PLATED	5.26