

SPARE PARTS LIST



HIT 120

50 cycles

SPARE PARTS LIST



PLEASE NOTE!

We recommend before using this Spare-Parts-List, that you carefully read the following instructions:

This illustrated Spare-Parts-List is recommended as a reference-list, and may be used for ordering the Spare-Parts-List for the NSM-Music Box

HIT 120

Each unit of built-in components has one or more pages on which all parts are illustrated.

Credit-unit, carriage and carriage base assy are being shown by means of explosive-drawings.

In the below shown lists are in the extreme left underneath "Position" the main numbers; these numbers refer to a group of parts which are separately illustrated. And slightly to the right are sub-numbers, these numbers coincide with the numbers in the drawings.

The letters L and M represent the continuation of a component list, whereby L designates the end of a list and M designates the start of the following page.

The second column of the table states the exact description of the parts, the third, the part numbers.

The dash (-) before the exact description of the parts is used to demonstrate the association of the parts.

A part with two dashes (--) belongs to the above part with one dash (-).

A part with three dashes (---) belongs to the above part with two dashes (--) etc.

The column on the extreme right refers to the number of times a part occurs in one unit.

This Spare-Parts-List refers only to the above specified NSM music-box type.

By each order of spare parts, we ask you, for your own interest to note the following:

- 1) Type of machine with serial number
- 2) Spare part number
- 3) Description of the part
- 4) Quantity of parts desired

Example of an order:

Hit 120 serial number.

Part-number 23 077

Selector key

1 (ea)

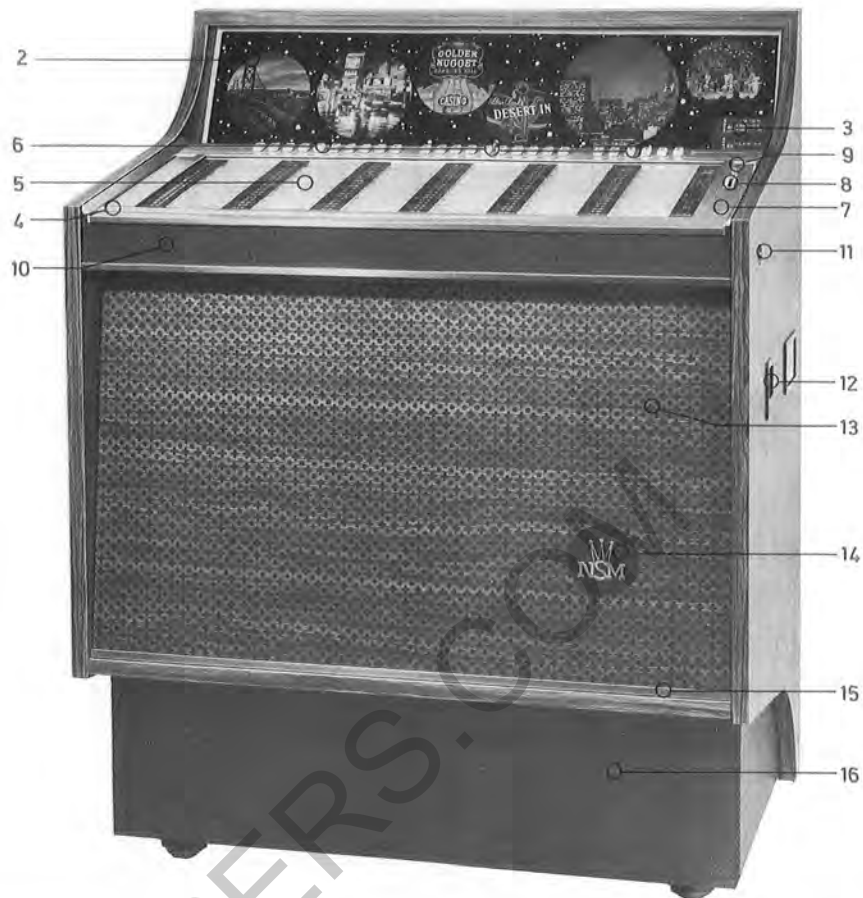
Precise orders save unnecessary questions and bring the best results.

PLEASE ASK ONLY LÖWEN-AUTOMATEN FOR SPARE PARTS!

MODIFICATION BY TECHNICAL PROGRESS RESERVED

SPARE PARTS LIST

Cabinet - Hit 120 empty

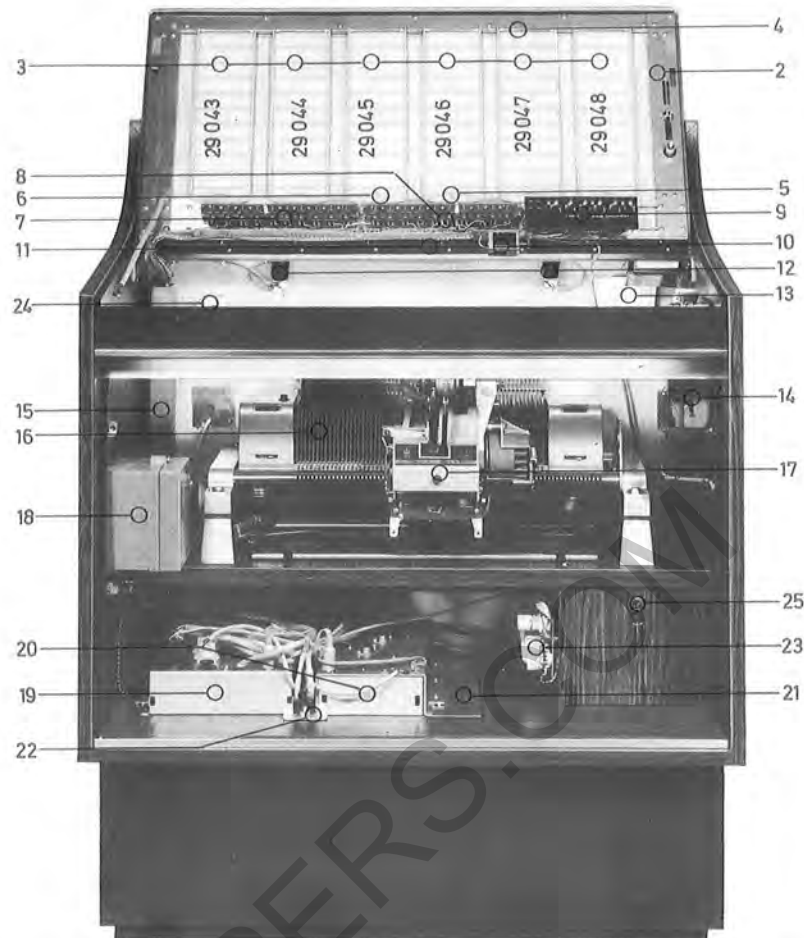


POSITION	DESCRIPTION	PART NUMBER	QTY	
1	CABINET HIT 120 (EMPTY)	203128		
2	-FRONT WINDOW	204160	1	
3	--PRICING PLASTIC			
	LIGHT-BOX	29125	1	
	HOLDER FOR LIGHT-BOX	41758	1	
	BULBS 24 V / 3 W	226028	2	
4	-PROGRAM LID ASSEMBLY	41845	1	
5	--PROGRAM GLASS	204161	1	
6	--BUTTON A-V/1-6	29064		
		-29089		
7	--COIN ENTRY FRAME	41755	1	
8	---COIN ENTRY	201178	1	
9	---COIN REJECT	22641	1	
	PLUNGER ASSEMBLY	41556	1	
	SPRING	205265	1	
10	-FRONT-PROFILE	23416	1	
	FLUORESCENT LAMP 16 W	226039	1	
	SOCKET	225187	2	
11	-CABINET LOCK, RIGHT	207518	1	
	CABINET LOCK, LEFT	207517	1	
12	-COIN RETURN CUP	41576	1	
13	-FRONT PLATE (PAINTINGS)	203131	1	
	(GRILL)	203130	1	
14	--EMBLEM NSM	41718	1	
15	-MOLDING	200367	1	
16	-SPEAKER GRILL	207525	1	
	LOUDSPEAKER 6 OHM	224068	2	
	LOUDSPEAKER 4,5 OHM	224078	1	

SPARE PARTS LIST



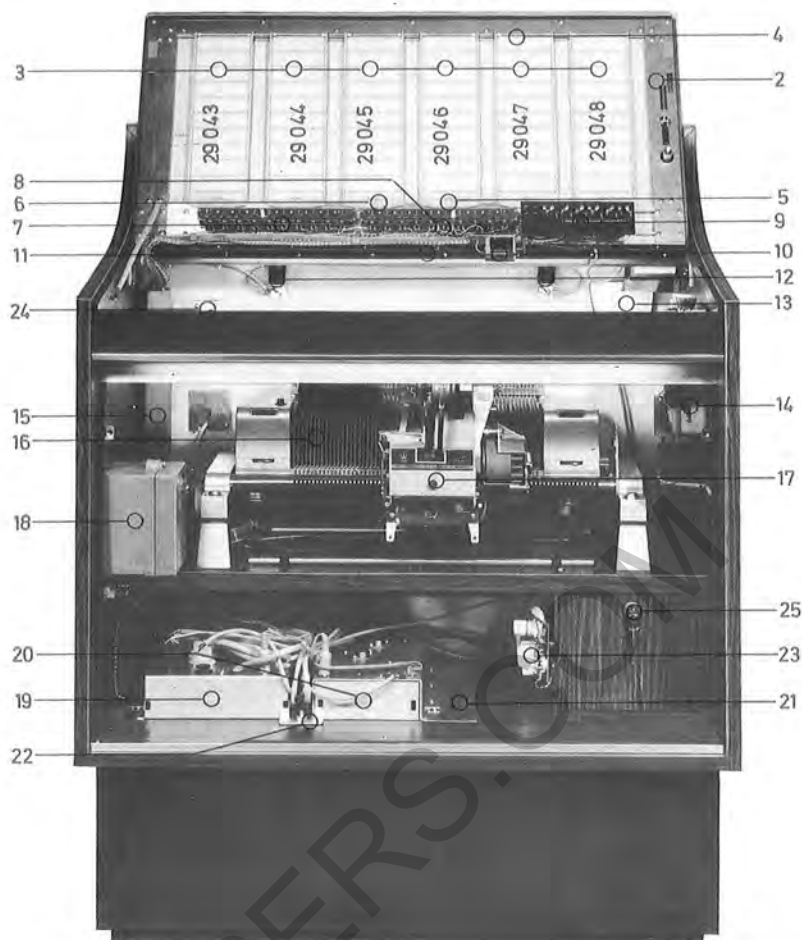
Cabinet - Hit 120



POSITION	DESCRIPTION	PART NUMBER	QTY
1	CABINET - HIT 120 SEE PAGE B 000		
2	--PROGRAM LID ASSEMBLY	41845	1
3	--TITLE STRIP HOLDERS	29043	1
	--TITLE STRIP HOLDERS	29044	1
	--TITLE STRIP HOLDERS	29045	1
	--TITLE STRIP HOLDERS	29046	1
	--TITLE STRIP HOLDERS	29047	1
	--TITLE STRIP HOLDERS	29048	1
4	--ROD	23288	1
5	--LATCH ROLL	29041	6
6	--SPRING	205264	6
7	--SWITCH ASSY-LEFT (10 SWITCHES)	41638	1
8	--SWITCH ASSY-MIDDLE (10 SWITCHES)	41637	1
9	--CONTACT PLATE	207438	1
	SWITCH ASSY-RIGHT (6 SWITCHES)	41636	1
10	--LATCH BAR SOLENOID	223185	1
11	--HINGE	201610	1
12	--SOCKET E 14	225010	2
	ILLUMINATION LAMP 220 V 15 W E 14	226040	2
13	--VOLUME CONTROL ASSEMBLY SEE PAGE R 000		
	OUTSIDE FRAME	29061	1
	SPACER	23247	2
	INSIDE FRAME	23248	1
	BACKPLATE	23249	1
14	--COIN MECHANISM SEE PAGE M 000		
14L	CONTINUED 1		

SPARE PARTS LIST

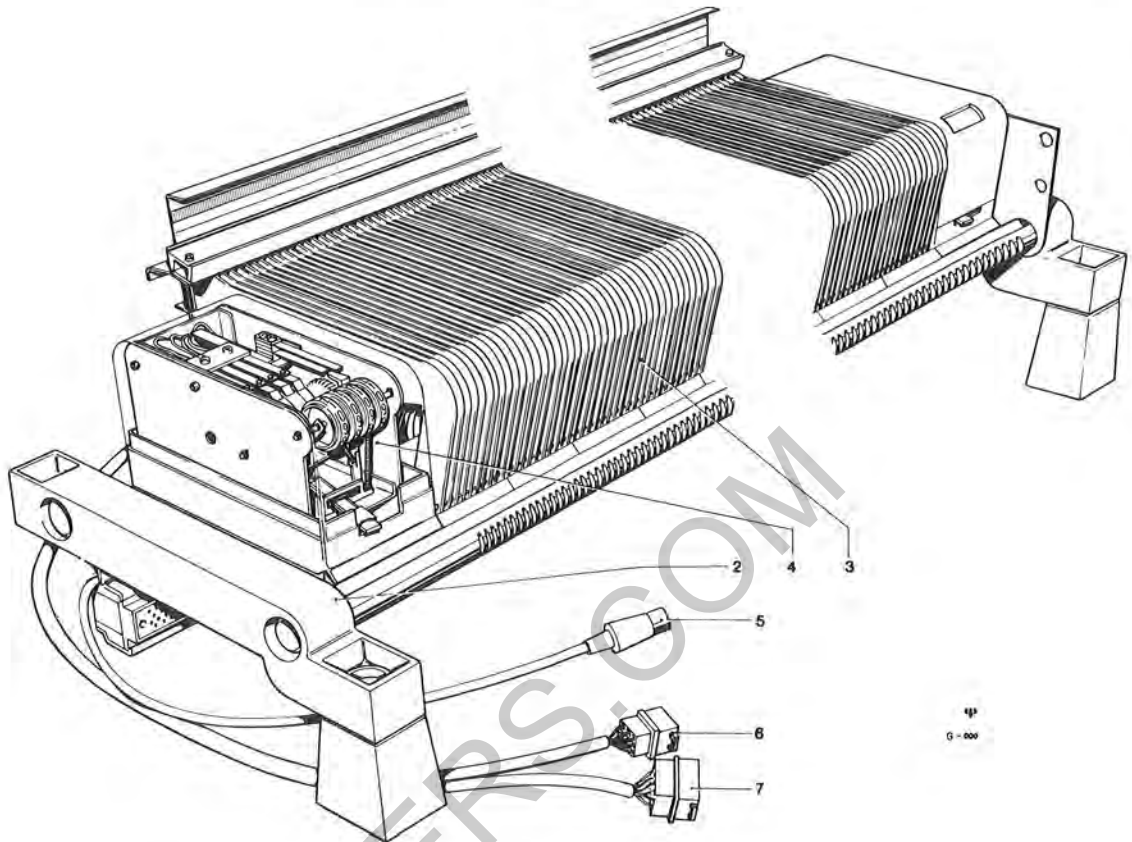
Cabinet - Hit 120



POSITION	DESCRIPTION	PART NUMBER	QTY
14M	CONTINUED 1		
15	-COVER FOR WIRE CHANNEL	202020	1
	WIRE CHANNEL	202805	1
16	-CARRIAGE BASE ASSEMBLY SEE PAGE G 000		
17	-CARRIAGE ASSEMBLY SEE PAGE L 000		
18	-CREDIT UNIT 40/I SEE PAGE K 000		
19	-CONTROL CENTRE 220/50 SEE PAGE S 000		
20	-TRANSISTOR AMPLIFIER 35 M SEE PAGE VM 000		
21	-MOUNTING PLATE	23275	1
	GUIDE-RAIL	200321	3
22	-LOCKING LEVER	23274	1
23	-MOUNTING PLATE FOR BALLAST	41756	1
	BALLAST	224064	1
	STARTER	225040	1
24	-JUNCTION PLATE ASSEMBLY	41764	1
25	-CASH BOX LOCK	207519	1

SPARE PARTS LIST

Carriage Base - Hit 120

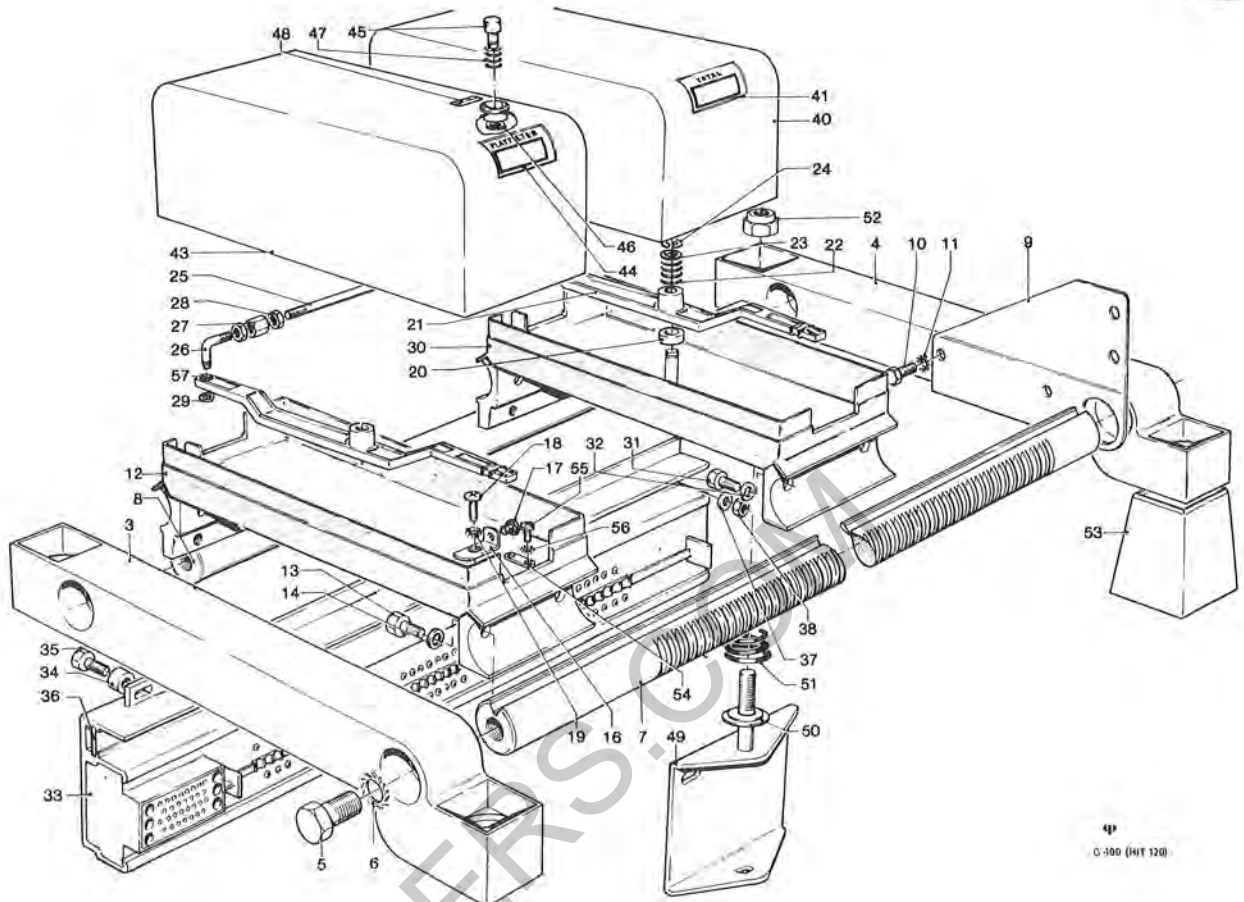


POSITION	DESCRIPTION	PART NUMBER	QTY
1	CARRIAGE BASE HIT 120		
2	-CARRIAGE BASE	SEE PAGE G 100	
3	-MAGAZINE	SEE PAGE G 200	
4	-SCAN CONTROL BOX	SEE PAGE G 300	
5	-PLUG MAS 300	225062	
6	-AMP PLUG 9 PRONG BLUE	23022	
7	-AMP PLUG 12 PRONG WHITE	225183	

SPARE PARTS LIST



Carriage base 120

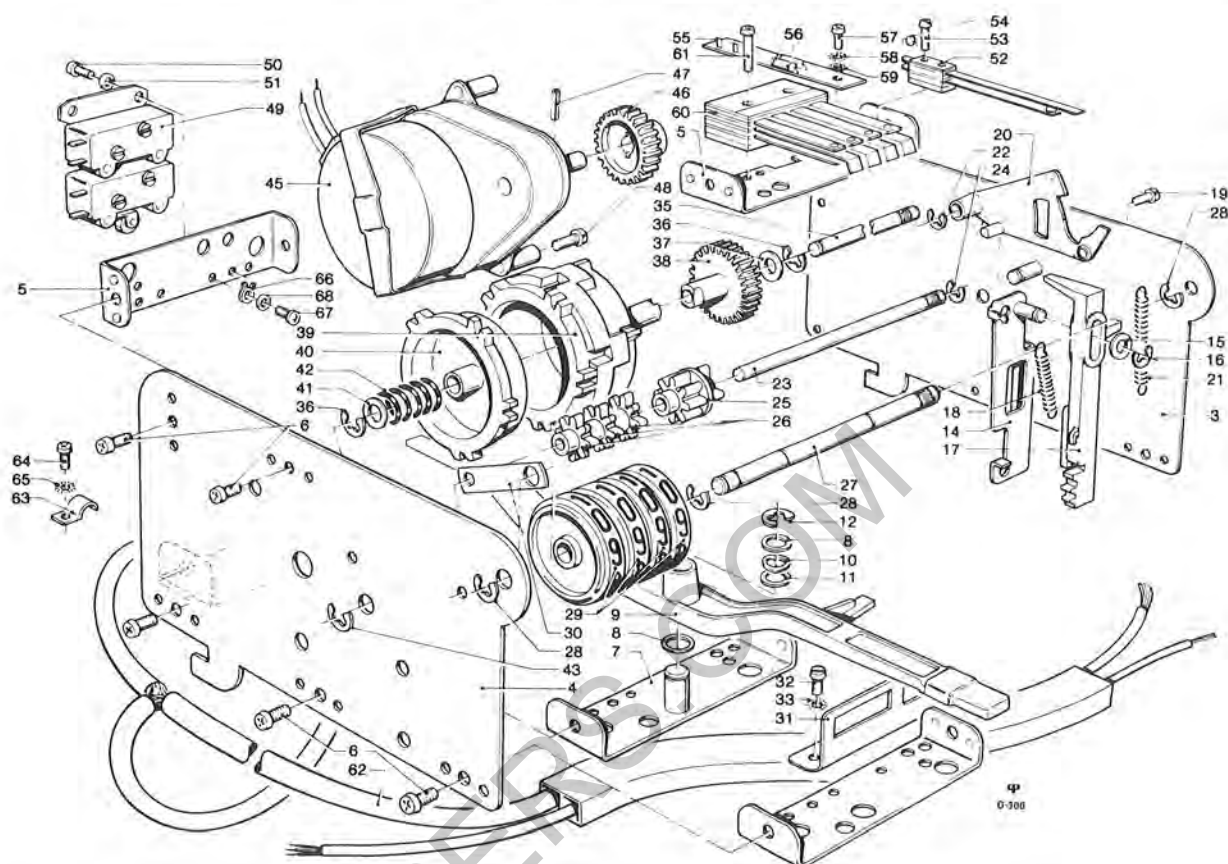


G-100 (HIT 120)

POSITION	DESCRIPTION	PART NUMBER	QTY
1	CARRIAGE BASE		
2	--CARRIAGE BASE ASSEMBLY	41763	1
3	--CONNECTING BRACKET, LEFT	200253	1
4	--CONNECTING BRACKET, RIGHT	200258	1
5	--SCREW M 10X15 DIN 933		4
6	--LOCKWASHER 10		4
7	--GEAR RACK	23282	1
8	--CONNECTING BAR	23283	1
9	--ENDPLATE	23170	1
10	--SCREW M 8X15 DIN 933		2
11	--LOCKWASHER 8		2
12	--BRACKET	200254	1
13	--SCREW M 8X15 DIN 933		4
14	--WASHER 8,4 DIN 433		4
15	--L-BRACKET ASSEMBLY		2
16	--L-BRACKET	23065	2
17	--BUMPER	207095	2
18	--SCREW M 5X8 DIN 7985		2
19	--LOCKWASHER 5		2
20	--SPACER	23224	1
21	--SWITCH LEVER	200257	1
22	--PRESSURE SPRING	205351	1
23	--WASHER 6,2X10X0,2		1
24	--E-WASHER 5 DIN 6799		1
25	--CONNECTING ROD, LONG	23289	1
26	--CONNECTING ROD, SHORT	23237	1
27	--ADJUSTING NUT	23236	1
28	--LOCKING NUT BM 3 DIN 439		2
28L	CONTINUED 1		

SPARE PARTS LIST

Carriage base with Selector control



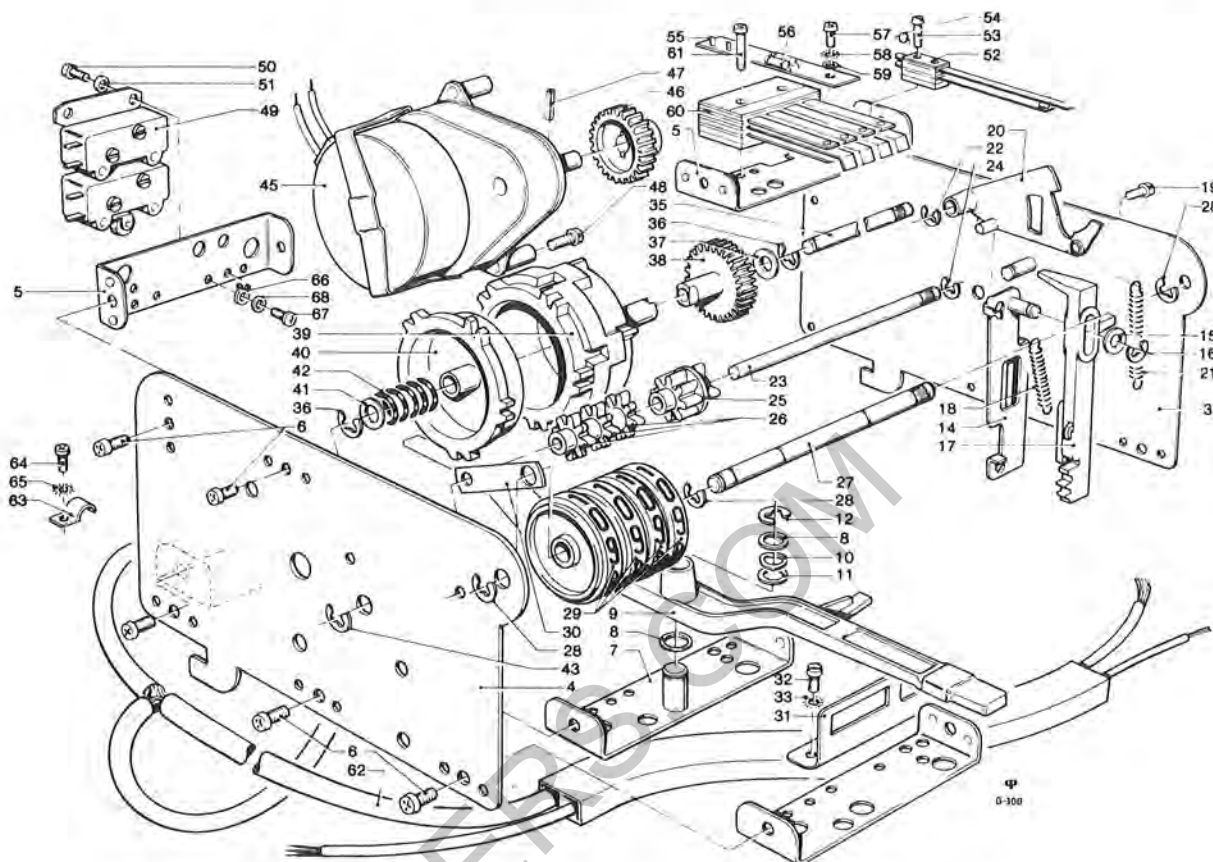
POSITION	DESCRIPTION	PART NUMBER	QTY
1	SCAN CONTROL		
2	--SCAN CONTROL BOX ASSEMBLY	41611	1
3	--PLATE, STAMPED	41456	1
4	--PLATE	23054	1
5	--U-BRACKET	23051	4
6	--SCREW AM 3X4 DIN 7985		10
7	--U-BRACKET, STAMPED	41457	1
8	--WASHER 6,2X10X0,2		2
9	--SWITCH LEVER	200257	1
10	--BEARING WASHER 9,8X6,2X0,2		1
11	--WASHER 6,2X11X0,5		1
12	--E-WASHER 4 DIN 6799		1
13	--STEP SWITCH ASSEMBLY	10163	1
14	--BRACKET, STAMPED	41458	1
15	--WASHER 6X3,1X0,2		1
16	--E-WASHER 2,3 DIN 6799		1
17	--STEP LEVER	202687	1
18	--TENSION SPRING	205328	1
19	--SCREW AM 3X5 DIN 7985		2
20	--PAWL ASSEMBLY	41484	1
21	--TENSION SPRING	205327	1
22	--E-WASHER 3,2 DIN 6799		1
23	--SHAFT	23068	1
24	--E-WASHER 1,9 DIN 6799		2
25	--STEP GEAR	202686	1
26	--DRIVE GEAR	202685	3
27	--SHAFT	23067	1
28	--E-WASHER 3,2 DIN 6799		6
29	--NUMBER DISC	202684	4
30	--SHAFT PLATE	23066	1
31	--GUIDE PLATE	23052	2
32	--SCREW M 3X4 DIN 84		4
33	--LOCKWASHER 3		4

33L

CONTINUED 1

SPARE PARTS LIST

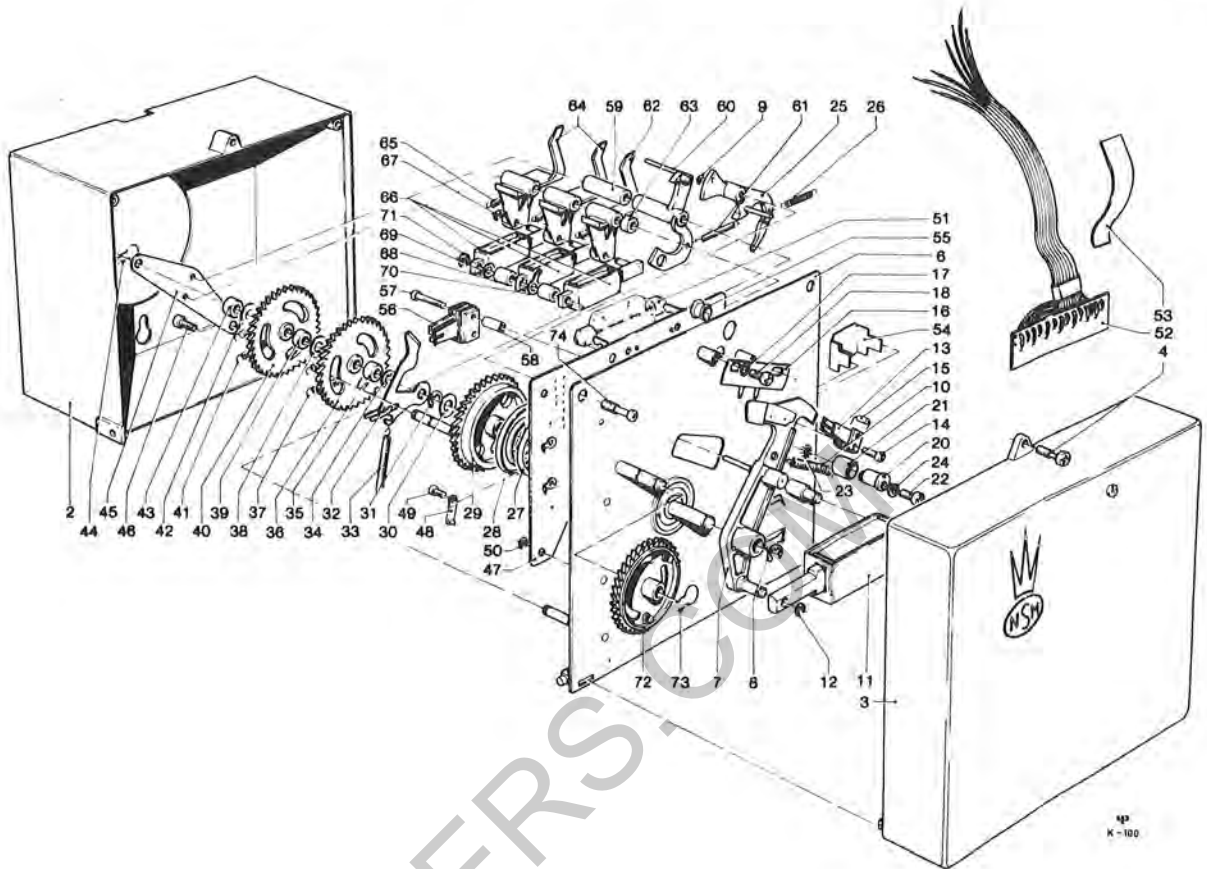
Carriage base with Selector control



POSITION	DESCRIPTION	PART NUMBER	QTY
33M	CONTINUED 1		
34	--CAM ASSEMBLY	10162	1
35	--SHAFT	23067	1
36	--E-WASHER 3,2 DIN 6799		4
37	--WASHER 4,3X8X0,2		1
38	--WING GEAR	202689	1
39	--CAM I	202680	1
40	--CAM DISC II	202681	1
41	--WASHER 4,3X11X0,5		1
42	--PRESSURE SPRING	205329	1
43	--E-WASHER 3,2 DIN 6799		1
44	--SELECTION MOTOR ASSEMBLY	41460	1
45	--MOTOR, STAMPED	41460	1
46	--GEAR	202688	1
47	--DRIVE PIN 1,5X8 DIN 1481		1
48	--SCREW AM 3X6 DIN 7985		2
49	--MICRO SWITCH ASSEMBLY	222196	1
50	--SCREW AM 3X5 DIN 7985		2
51	--WASHER 3,1X6,7X1		2
52	--SWITCH BLADE ASSEMBLY	222194	1
53	--SCREW AM 2,3X15 DIN 84		2
54	--VARISTOR E299 DD/P 344	221103	1
55	--CONNECTION PLATE, ASSEMBLED	207409	1
56	--DIODE 1N 4004	221115	2
57	--SCREW AM 3X5 DIN 7985		1
58	--LOCKWASHER 3		1
59	--WASHER 3,2 DIN 125		1
60	--SWITCH BLADE ASSEMBLY	222191	1
61	--SCREW AM 3X15 DIN 7985		2
62	--HARNESS	41610	1
63	--CABLE CLAMP 7 Ø	229010	1
64	--SCREW AM 4X4 DIN 7985		1
65	--LOCKWASHER 4		1
66	--SOLDER LUG L 690 B/3,2	229079	1
67	--SCREW AM 3X4 DIN 7985		1
68	--WASHER 3,1X6,7X1		1

SPARE PARTS LIST

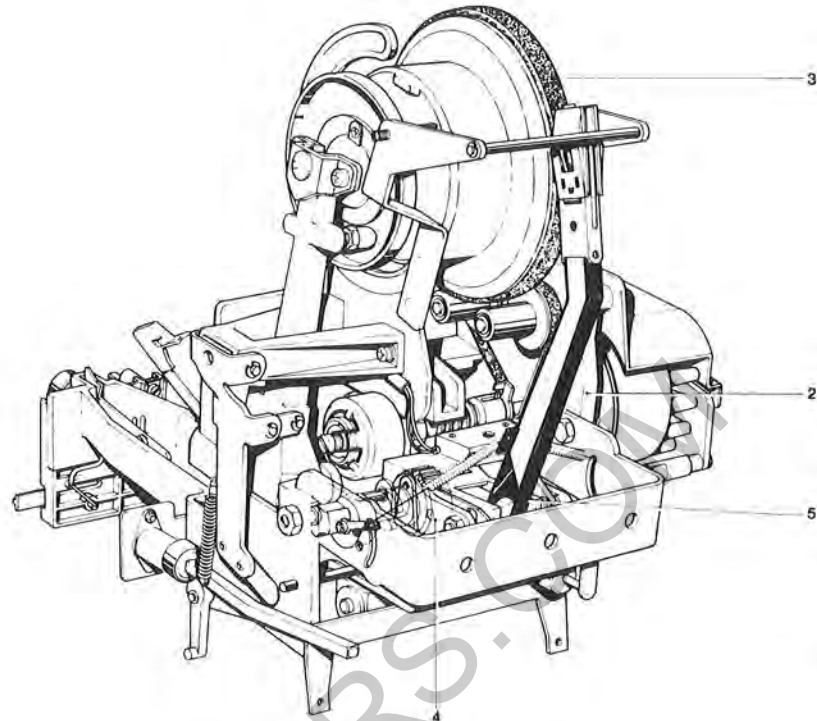
Credit unit 40/I



POSITION	DESCRIPTION	PART NUMBER	QTY
37M	CONTINUED 1		
38	-WASHER 4,2X11X0,2		1
39	-SPACER	29053	1
40	-CREDIT WHEEL IV ASSEMBLY	41543	1
41	-TENSION SPRING	205278	1
42	-WASHER 4,2X11X0,2		1
43	-SPACER	29053	1
44	-CLIP	205256	1
45	-CENTERING PLATE	23166	1
46	-SCREW AM 3X5 DIN 7986		1
47	-CONTACT PLATE FOR SINGLE ALBUM SWITCH	207406	1
48	-CONTACT JUMPER	10021	2
49	-SCREW M 3X4 DIN 7986		2
50	-E-WASHER 2,3 DIN 6799		3
51	-LAMP 24 V 18 W	226037	1
52	-HARNESS ASSEMBLY	41552	1
53	-HARNESS PROTECTOR	23198	1
54	-CABLE CLAMP	229096	1
55	-GROMMET	28005	1
56	-CREDIT SWITCH ASSEMBLY	222223	1
57	-SCREW M 2,3X22 DIN 84		2
58	-SPACER	23197	2
59	-SPACER	29054	1
60	-STOP PAWL	202787	1
61	-TENSION SPRING FOR STOP PAWL	205345	1
62	-RELEASE PAWL ASSEMBLY	41546	1
63	-SPACER	29057	1
64	-RELEASE PAWL ASSEMBLY	41554	2
65	-TENSION SPRING FOR RELEASE PAWL	205346	3
66	-ADD SOLENOID ASSEMBLY	223191	3
67	-E-WASHER 2,3 DIN 6799		3
68	-SPACER	23196	2
69	-WASHER 4X6X0,5		1
70	-LUG L 804 B	229095	1
71	-E-WASHER 3,2 DIN 6799		1
72	-CREDIT WHEEL V ASSEMBLY	41550	1
73	-CLIP	205256	1
74	-SCREW BM 4X15X5 DIN 7986		2

SPARE PARTS LIST

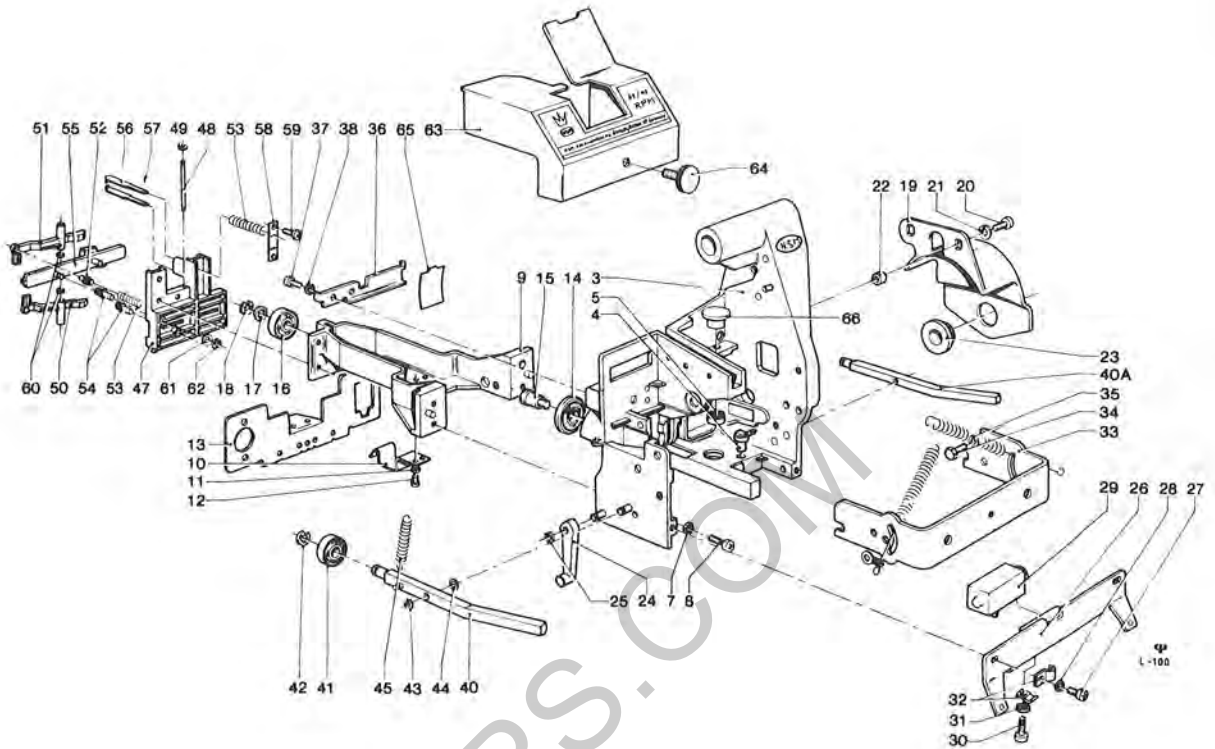
Carriage



POSITION	DESCRIPTION	PART NUMBER	QTY
1	CARRIAGE	41491	1
2	-CARRIAGE FRAME		
3	-CARRIAGE DRIVE		
4	-TRANSFER AND TONE ARM DRIVE		
5	-RECORD DRIVE AND TONE ARM		

SPARE PARTS LIST

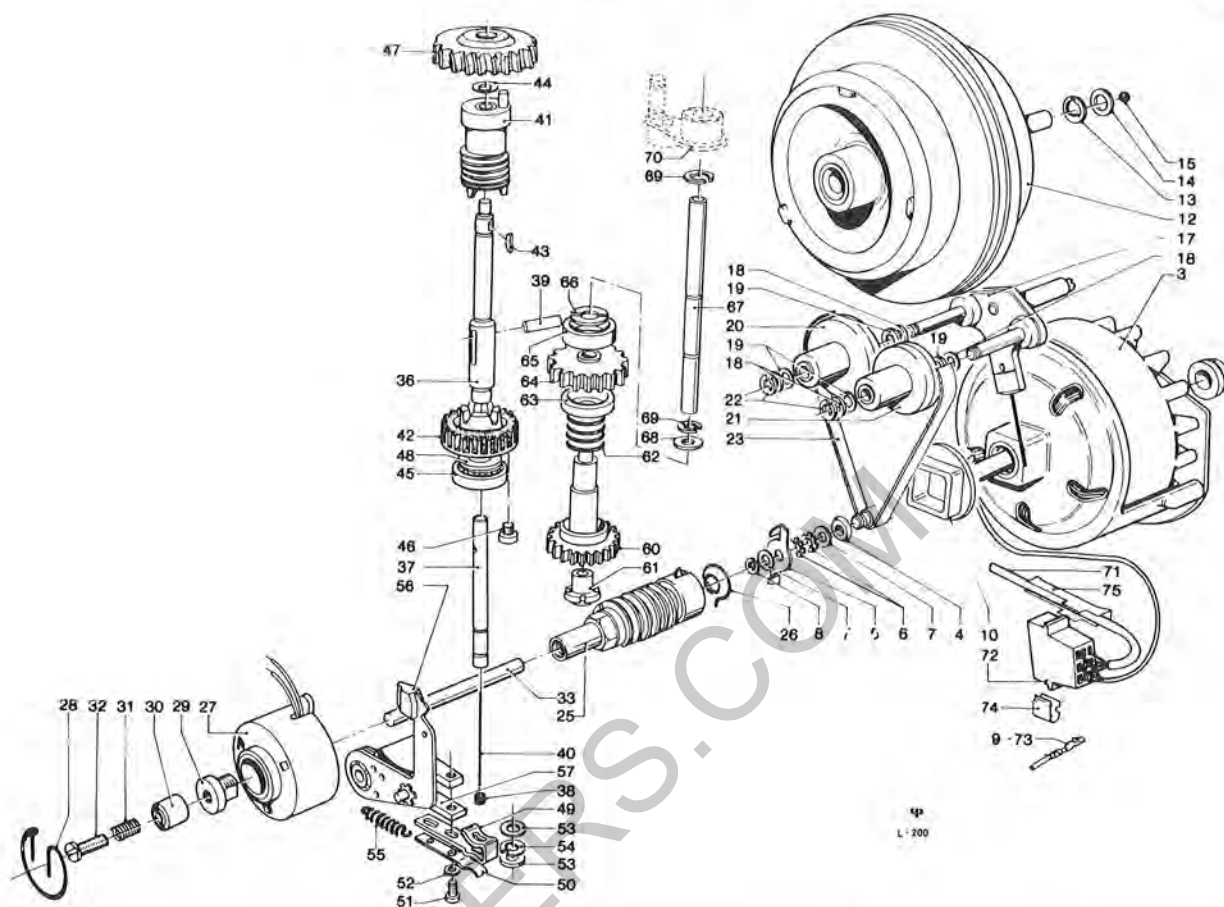
Carriage chassis



POSITION	DESCRIPTION	PART NUMBER	QTY
34M	CONTINUED 1		
35	--WASHER 4,3 DIN 125		1
36	--BRACKET	23135	1
37	--SCREW AM 4X8 DIN 7985		2
38	--LOCKWASHER 4		2
39	--LOCKING LEVER, LEFT ONLY	10158	1
39A	--LOCKING LEVER, RIGHT ONLY	10159	1
40	---LOCKING LEVER, LEFT STAMPED	41493	1
40A	---LOCKING LEVER, RIGHT STAMPED	41494	1
41	---BALL BEARING EL 6 ZZ	206058	2
42	---E-WASHER 5 DIN 6799		2
43	--E-WASHER 3,2 DIN 6799		2
44	--WASHER 4,3 DIN 433		2
45	--TENSION SPRING	205333	2
46	--READ OUT BLOCK ASSEMBLY		1
47	--HOUSING	202699	1
48	--SHAFT	23063	1
49	--E-WASHER 1,9 DIN 6799		2
50	--SENSING LEVER, LOWER	23266	1
51	--SENSING LEVER, UPPER	23267	1
52	--READ-OUT CONTACTS	201513	2
53	--SPRING	205324	4
54	--CONTACT PIN	201514	2
55	--SHIFTING SLIDE	41480	1
56	--CONTACT PLUNGER	201510	2
57	--LOCKING PIN 1X4 DIN 1481		2
58	--CONTACT PLATE	23059	1
59	--SCREW AM 2,6X5 DIN 7985		2
60	--WASHER 2,5X5X0,4		2
61	--WASHER 3,2X6X0,2		1
62	--E-WASHER 2,3 DIN 6799		1
63	--COVER ASSEMBLY	29030	1
64	--SHOULDER SCREW M 3X6 DIN 465		1
65	--INSULATION	201542	1
66	--PLASTIC PLUG	29013	1

SPARE PARTS LIST

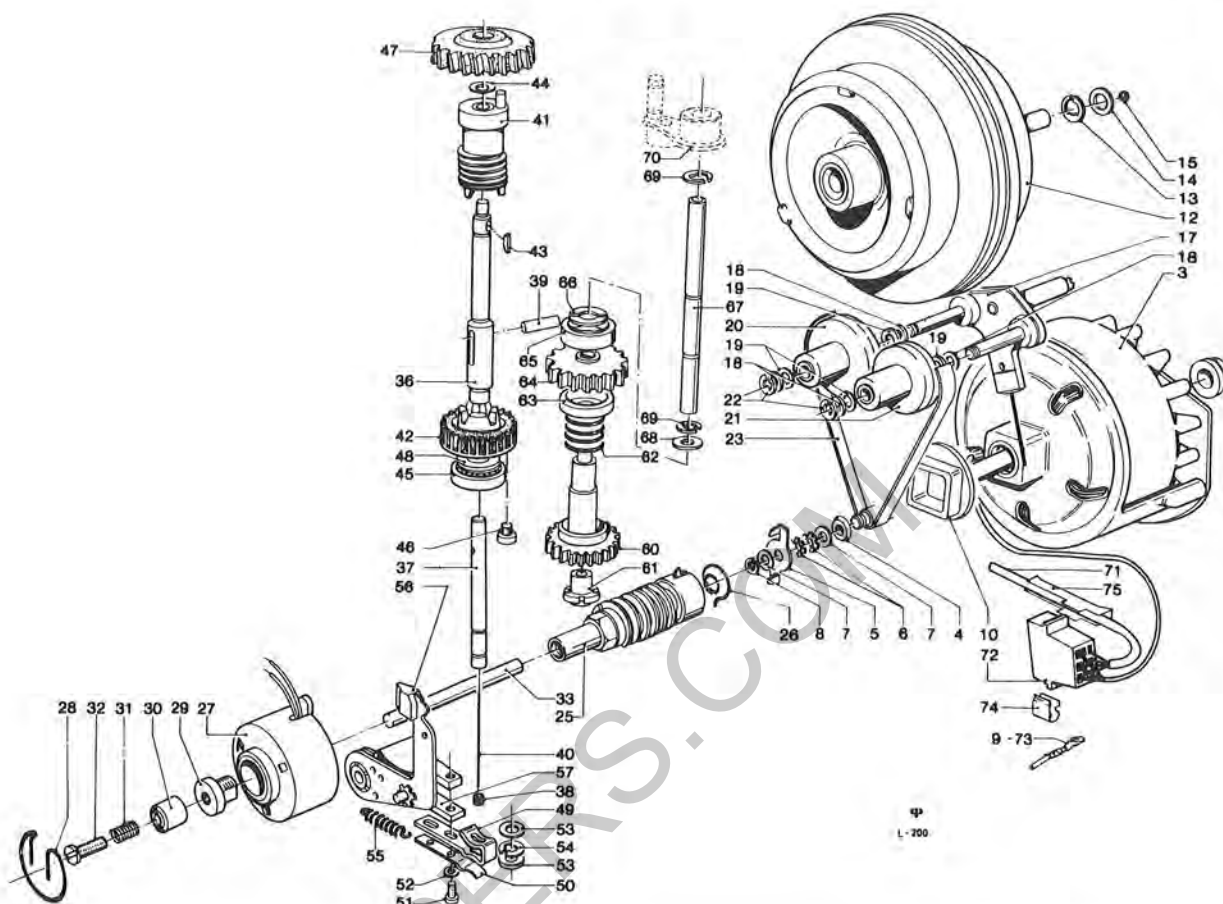
Carriage drive



POSITION	DESCRIPTION	PART NUMBER	QTY
1	CARRIAGE DRIVE		1
2	--CARRIAGE MOTOR ASSEMBLY	41529	1
3	--CARRIAGE MOTOR, ONLY	224093	1
4	--SEAL RING	23018	1
5	--BUTTERFLY CLUTCH	23043	1
6	--SPRING WASHER	205119	2
7	--WASHER 9,5X5H7X0,4		2
8	--E-WASHER 4 DIN 6799		1
9	--AMP-LOK CONTACT NR. 42859-2	222205	3
10	--GROMMET FRONT	207347	1
11	--TURNTABLE DRIVE		1
12	--TURNTABLE ASSEMBLY	41504	1
13	--E-WASHER 7 DIN 6799		1
14	--WASHER 8,3X12X0,2		1
15	--STEEL BALL 4 Ø III DIN 5401		1
16	--2 SPEED DRIVE ASSY 50 CPS	41461	1
17	---SHIFTING CROSS, ONLY 50 CPS	41364	1
18	---WASHER 6,1X10X0,1-0,4		AR
19	---WASHER	29016	4
20	---IDLER WHEEL, LARGE 50 CPS	41343	1
21	---IDLER WHEEL, SMALL 50 CPS	41342	1
22	---E-WASHER 3,2 DIN 6799		2
23	--FLATBELT	23360	1
24	--ELECTRICAL COUPLING		1
25	--WORM DRIVE ASSEMBLY	41338	1
26	---CONE PRESSURE SPRING	205280	1
26L	CONTINUED 1		

SPARE PARTS LIST

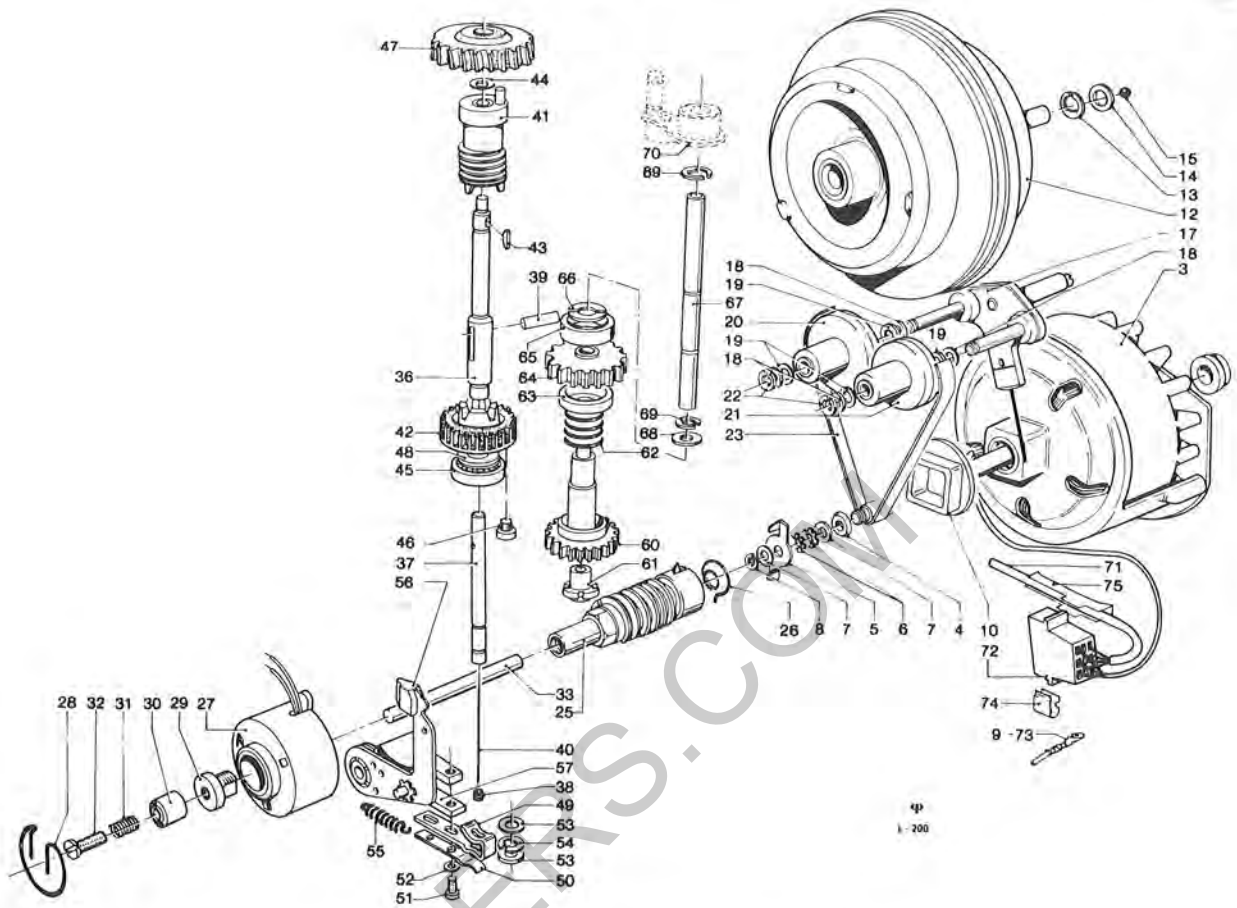
Carriage drive



POSITION	DESCRIPTION	PART NUMBER	QTY
26M	CONTINUED 1		
27	--ELECTRICAL COUPLING SOLENOID (CLUTCH) ASSY	41349	1
28	--CLIP	205302	1
29	--CORE	22137	1
30	--ARMATURE	41037	1
31	---PRESSURE SPRING	205147	1
32	---SCREW AM 3X12 DIN 84		1
33	--COUPLING ROD	201527	1
34	-ALTERNATING CLUTCH (SCAN-TRANSFERPLAY)		
35	--ALTERNATING CLUTCH ASSEMBLY	10160	1
36	---CLUTCH SHAFT	23141	1
37	---CLUTCH ROD	22053	1
38	----LOCKING SCREW M 2,6X4 DIN 551		1
39	---DRIVE PIN	22054	1
40	---NEEDLE	22055	1
41	--WORMGEAR FOR ALTERNATING CLUTCH ASSY	41503	1
42	--CLUTCH GEAR	29032	1
43	--LOCKING SPRING 1,5X2,6 DIN 6888		1
44	--WASHER 6,2X10X0,05-0,2		AR
45	--BALL BEARING EL 6 ZZ	206058	1
46	--SCREW AM 3X6 DIN 7985		2
47	--COUPLING GEAR	22914	1
48	--WASHER 6,2X9X0,3		1
49	--CLUTCH ARM	22138	1
50	--CLUTCH SPRING FLAT	205144	1
51	--SCREW AM 3X8 DIN 7985		2
51L	CONTINUED 2		

SPARE PARTS LIST

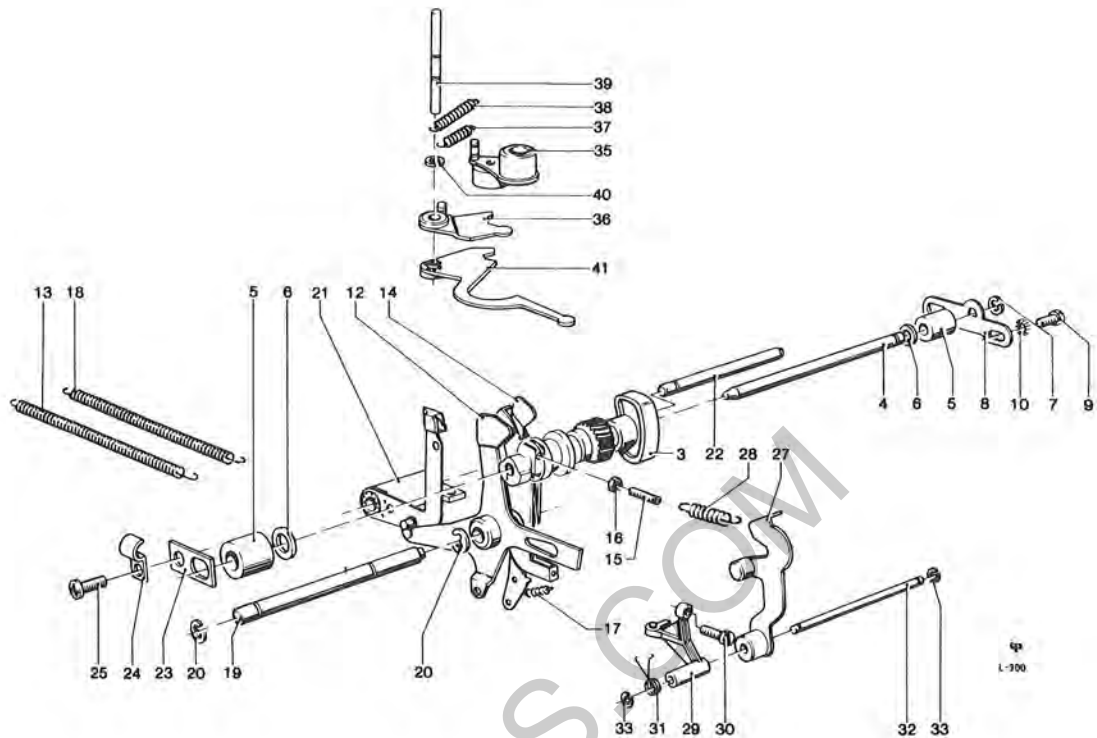
Carriage drive



POSITION	DESCRIPTION	PART NUMBER	QTY
51M	CONTINUED 2		
52	--WASHER 3,2X5,4X0,3		2
53	--WASHER 4,2X6,5X0,5		2
54	--E-WASHER 3,2 DIN 6799		1
55	--TENSION SPRING	205149	1
56	--LOCKING PAWL ASSEMBLY	41464	1
57	--SPACER 0,5mm	22490	AR
57A	--SPACER 1,0mm	22491	AR
57B	--SPACER 2,0mm	22152	AR
58	--SCAN ASSEMBLY		1
59	--SLIP CLUTCH ASSEMBLY	41555	1
60	---SCAN GEAR	202690	1
61	---HUB	202694	1
62	---PRESSURE SPRING	205306	1
63	---FRICTION DISC, LOWER	202691	1
64	---DRIVE GEAR	23313	1
65	---FRICTION DISC, UPPER	202692	1
66	---SAFETY SEGMENT	23176	2
67	---SHAFT	23062	1
68	--WASHER 5,1X11,8X0,3		2
69	--E-WASHER 4 DIN 6799		2
70	--LATCHING LEVER	SEE PAGE L 300	
71	--HARNESS-CARRIAGE	41507	1
72	--AMP-PLUG 9 PRONG	225105	1
73	--AMP-LOK CONTACT NR. 42859-2	222205	4
74	--CLAMP TYP SCO 5069	205276	1
75	--CABLE CHANNEL	23177	1

SPARE PARTS LIST

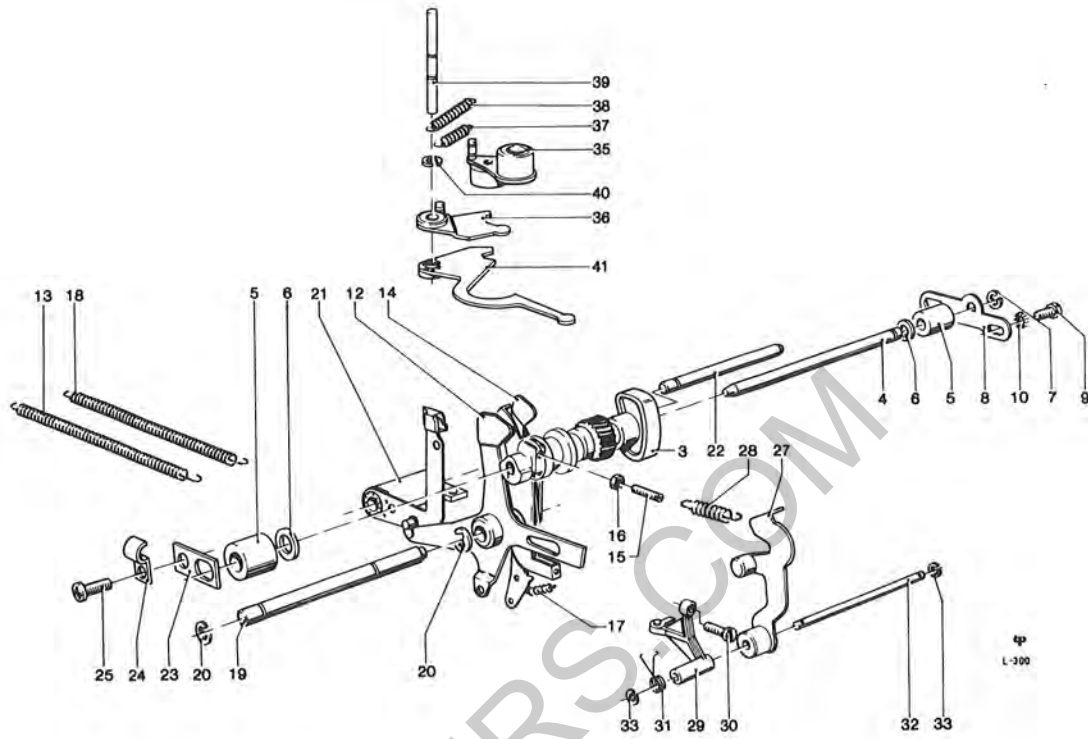
Transfer and tonearm drive



POSITION	DESCRIPTION	PART NUMBER	QTY
1	TRANSFER AND TONEARM DRIVE		1
2	--CAMSHAFT		1
3	--CAMSHAFT ASSY	41337	1
4	--SHAFT	22908	1
5	--SPACER	22146	2
6	--WASHER 5,2X10X0,05-0,2		AR
7	--E-WASHER 4 DIN 6799		1
8	--ADJUSTING PLATE	22768	1
9	--SCREW AM 4X6 DIN 7985		2
10	--LOCKWASHER 4		2
11	--SEARCH AND LOCKING ASSEMBLY		1
12	--TRIP LEVER ASSEMBLY	41487	1
13	--TENSION SPRING	205148	1
14	--LOCKING LEVER ASSEMBLY	41031	1
15	---LOCKING SCREW M 2,6X0,35X10 DIN 551		1
16	---NUT BM 2,6X0,35 DIN 439		1
17	--PRESSURE SPRING	205156	1
18	--TENSION SPRING	205150	1
19	--SHAFT	23130	1
20	--E-WASHER 4 DIN 6799		2
21	--LOCKING PAWL ASSEMBLY SEE PAGE L 200		1
22	--SHAFT	23145	1
23	--SHAFT SAFETY	22132	1
24	--CABLE CLAMP 3 NR. 6100a	229002	1
25	--SCREW AM 3X5 DIN 7985		1
25L	CONTINUED 1		

SPARE PARTS LIST

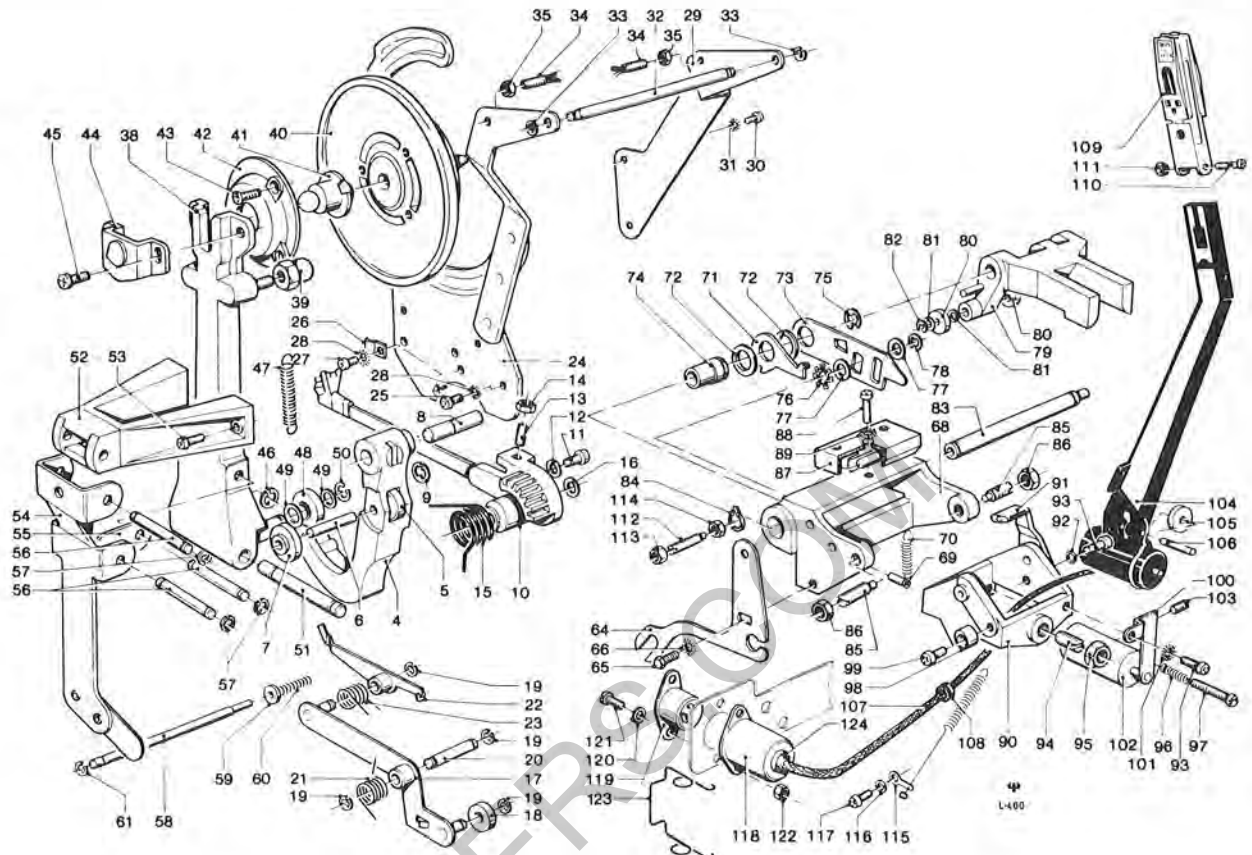
Transfer and tonearm drive



POSITION	DESCRIPTION	PART NUMBER	QTY
25M	CONTINUED 1		
26	--TRANSFER ASSEMBLY		1
27	--SPEED CONTROL LEVER ASSEMBLY	41341	1
28	---TENSION SPRING	205238	1
29	--CONTACT LEVER (OPERATING SWITCH) ASSEMBLY	41346	1
30	--SCREW	22896	1
31	--TORSION SPRING	205305	1
32	--SHAFT	22895	1
33	--E-WASHER 4 DIN 6799		2
34	-TONEARM DRIVE		1
35	--LATCHING LEVER ASSEMBLY	41483	1
36	--CRADLE ACTUATOR ASSEMBLY	41500	1
37	--TENSION SPRING	205234	1
38	--TENSION SPRING	205235	1
39	--SHAFT	22136	1
40	--E-WASHER 2,3 DIN 6799		2
41	--PICK UP SHIFTING LEVER	41015	1

SPARE PARTS LIST

Record drive and tonearm



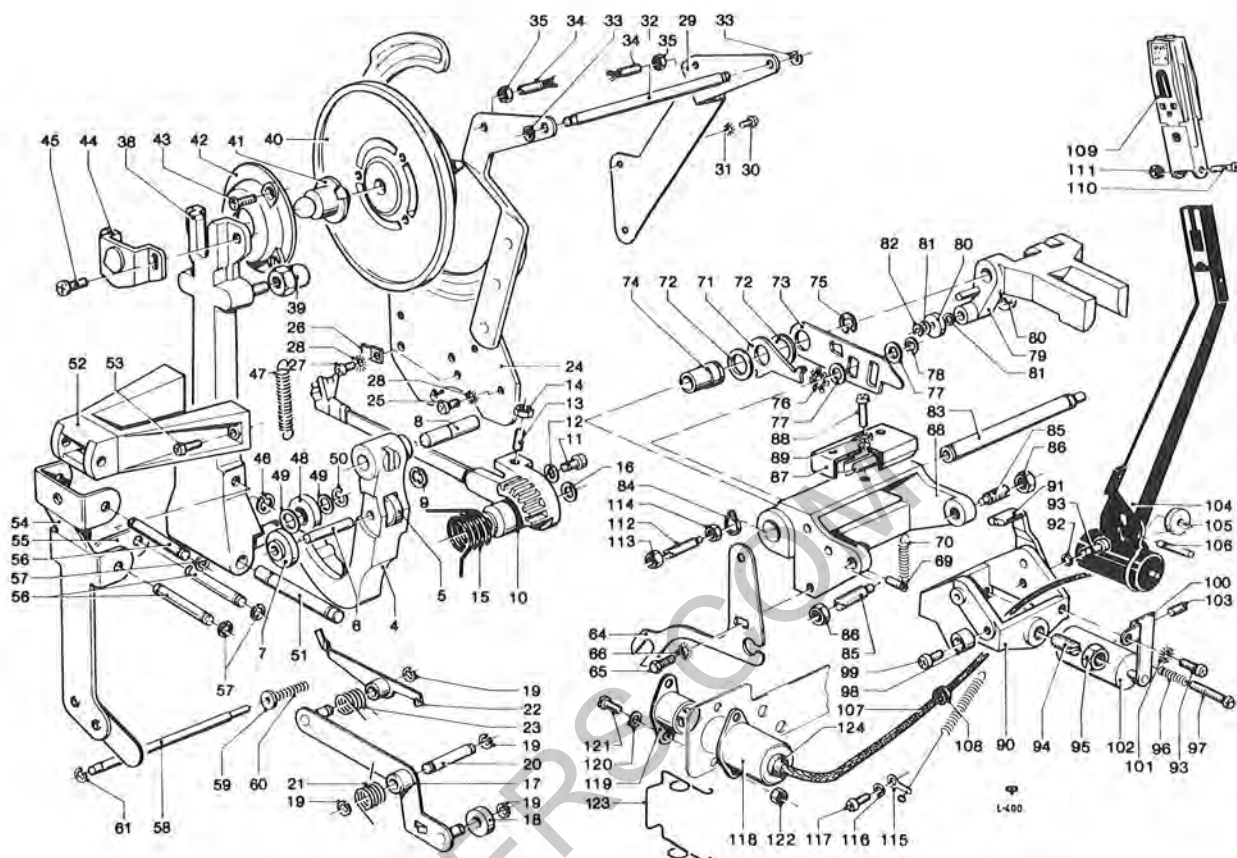
POSITION	DESCRIPTION	PART NUMBER	QTY
1	RECORD DRIVE AND TONEARM		
2	--RECORD DRIVE		1
3	--GEARSEGMENT ASSEMBLY	41463	1
4	--GEARSEGMENT	23073	1
5	--ROLLER ASSEMBLY	41354	1
6	--SHAFT	22874	1
7	--ROLLER ASSEMBLY	41356	1
8	--SHAFT	22133	1
9	--E-WASHER 4 DIN 6799		1
10	--RECORD TRANSFER ARM ASSEMBLY	41532	1
11	--SCREW AM 3X5 DIN 7985		1
12	--WASHER 3,2 DIN 125		1
13	--LOCKING SCREW M 4X10 DIN 551		1
14	--NUT BM 4 DIN 439		1
15	--TORSION SPRING	205325	1
16	--WASHER 5,2X10X0,1-0,4		AR
17	--COUPLING LEVER ASSEMBLY	41502	1
18	--ROLLER	23261	1
19	--E-WASHER 2,3 DIN 6799		4
20	--SHAFT	23058	1
21	--TORSION SPRING	205332	1
22	--ADVANCE LEVER ASSEMBLY	41501	1
23	--TORSION SPRING	205326	1
24	--GUIDE PLATE ASSEMBLY	41477	1
25	--SCREW AM 3X5 DIN 7985		2
26	--CABLE CLAMP 3 NR. 6100a	229002	1
27	--SCREW AM 3X6 DIN 7985		1
28	--LOCKWASHER 3		3
29	--SUPPORT BRACKET	23091	1
30	--SCREW AM 4X8 DIN 7985		2
31	--LOCKWASHER 4		2
32	--SHAFT	23092	1
33	--E-WASHER 3,2 DIN 6799		2
34	--BRUSH ASSEMBLY	202427	2
35	--NUT BM 4 DIN 439		2

35L

CONTINUED 1

SPARE PARTS LIST

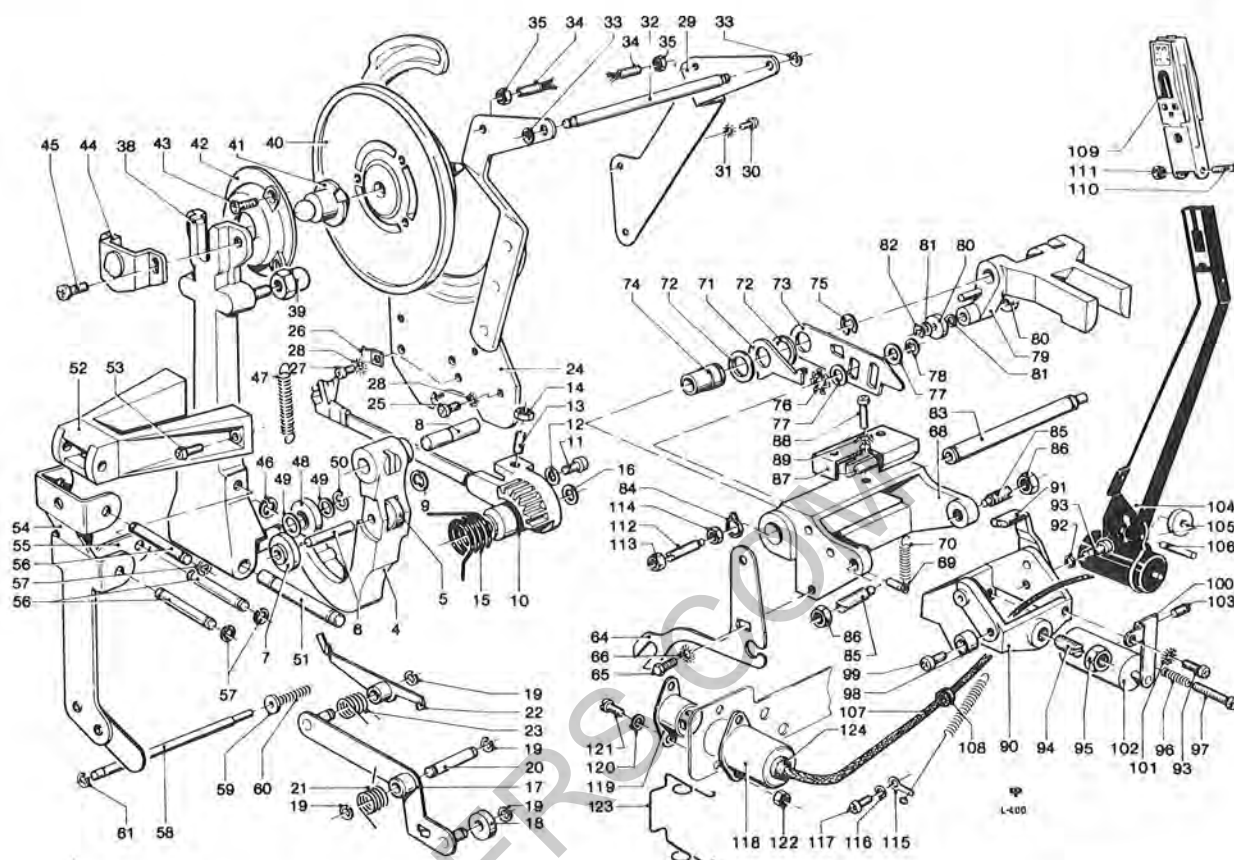
Record drive and tonearm



POSITION	DESCRIPTION	PART NUMBER	QTY
35M	CONTINUED 1		
36	--RECORD CLAMP ASSEMBLY		1
37	--RECORD CLAMP		1
38	--CLAMP ARM ASSEMBLY	41355	1
39	--ADJUSTING NUT	29025	2
40	--CLAMP DISC	29022	1
41	--JOINT	41357	1
42	--FLANGE	29023	1
43	--SCREW BZ 2,9X6,5 DIN 7983		3
44	--PIVOT BLOCK	29024	1
45	--SCREW AM 4X8 DIN 7985		2
46	--E-WASHER 3,2 DIN 6799		1
47	--TENSION SPRING	205304	1
48	--ROLLER ASSEMBLY	41354	1
49	----WASHER 7,5X4,2X0,1		2
50	----E-WASHER 3,2 DIN 6799		1
51	---SHAFT	22890	1
52	---SUPPORT FOR CLAMP ARM	22900	1
53	----SCREW AM 3X6 DIN 7985		2
54	---SPEED CONTROL ACTUATOR ASSY	41340	1
55	---INTERMEDIATE LEVER	22846	1
56	---SHAFT	22879	3
57	----E-WASHER 2,3 DIN 6799		6
58	---SHIFTING ROD	22893	1
59	---RING	22894	1
60	----PRESSURE SPRING	205303	1
61	----E-WASHER 4 DIN 6799		1
62	-TONE ARM ASSEMBLY		1
63	--CRADLE ASSEMBLY	10161	1
64	--CRADLE GUIDE	23039	1
65	---SCREW M 4X6 DIN 933		1
65L	CONTINUED 2		

SPARE PARTS LIST

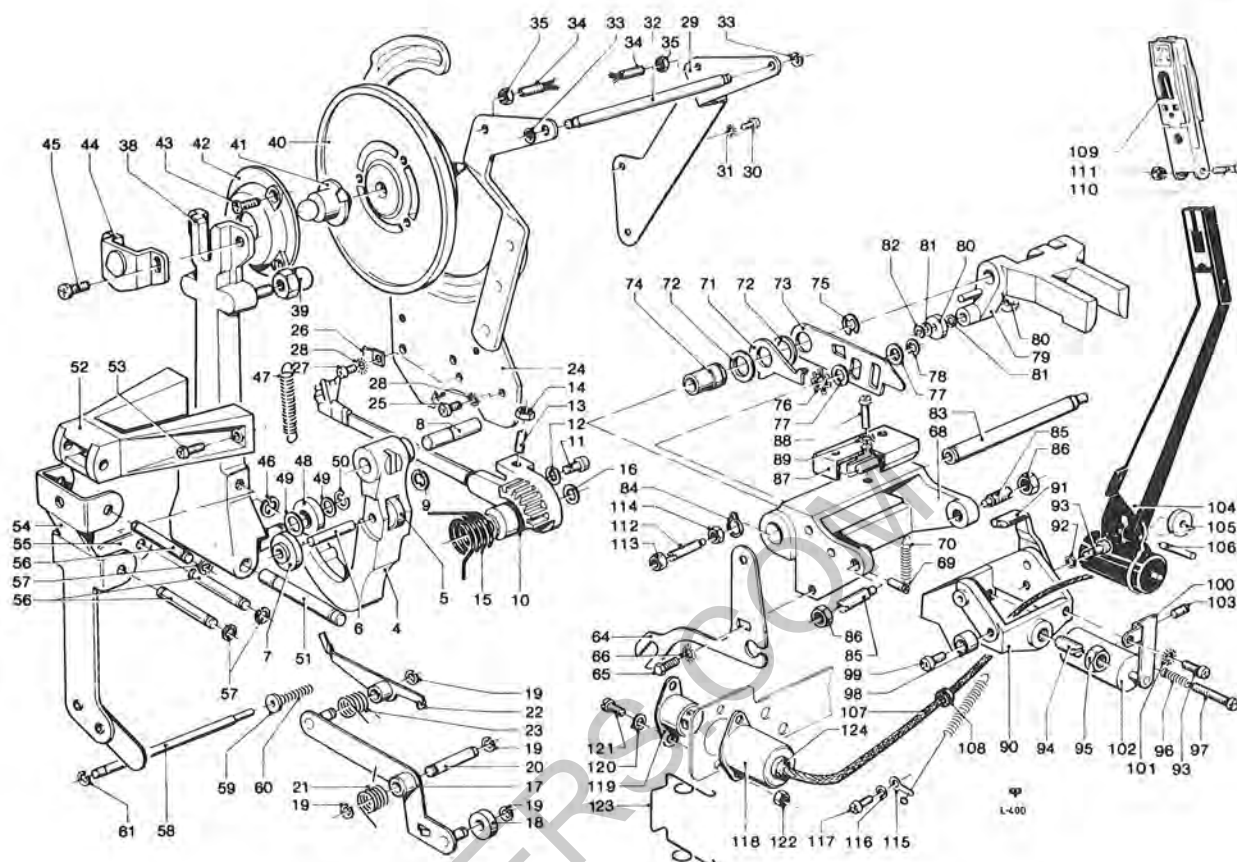
Record drive and tonearm



POSITION	DESCRIPTION	PART NUMBER	QTY
65M	CONTINUED 2		
66	---LOCKWASHER 4		1
67	---CRADLE BLOCK ASSEMBLY	41481	1
68	---CRADLE BLOCK		1
69	---PIN 3X8		1
70	---TENSION SPRING	205313	1
71	---RESET LEVER ACTUATOR	22929	1
72	---WASHER 8,3X12X0,1		2
73	---RESET LEVER	22930	1
74	---SLEEVE	22927	1
75	---E-WASHER 7 DIN 6799		1
76	---SPRING WASHER	205119	1
77	---WASHER 14X5,3X0,4		2
78	---E-WASHER 4 DIN 6799		1
79	---RELEASE FORK ASSEMBLY	41368	1
80	---ROLLER	22122	2
81	---WASHER 3,2X7X0,1		AR
82	---E-WASHER 4 DIN 6799		2
83	---SHAFT	22098	1
84	---CLIP RING 4,8 SP 220		2
85	---LOCKING SCREW	22099	2
86	---NUT BM 5 DIN 439		2
87	---REED SWITCH HOLDER ASSEMBLY	41369	1
88	---SCREW AM 3X6 DIN 7985		1
89	---LOCKWASHER 3		1
90	---PICK-UP PIVOT BLOCK ASSEMBLY	41367	1
91	---MAGNET HOLDER ASSEMBLY	41810	1
	---MAGNET	201474	1
92	---WASHER 3,2 DIN 125		1
93	---SCREW M 3X7 DIN 7985		2
94	---LOCKING SCREW	22101	1
94L	CONTINUED 3		

SPARE PARTS LIST

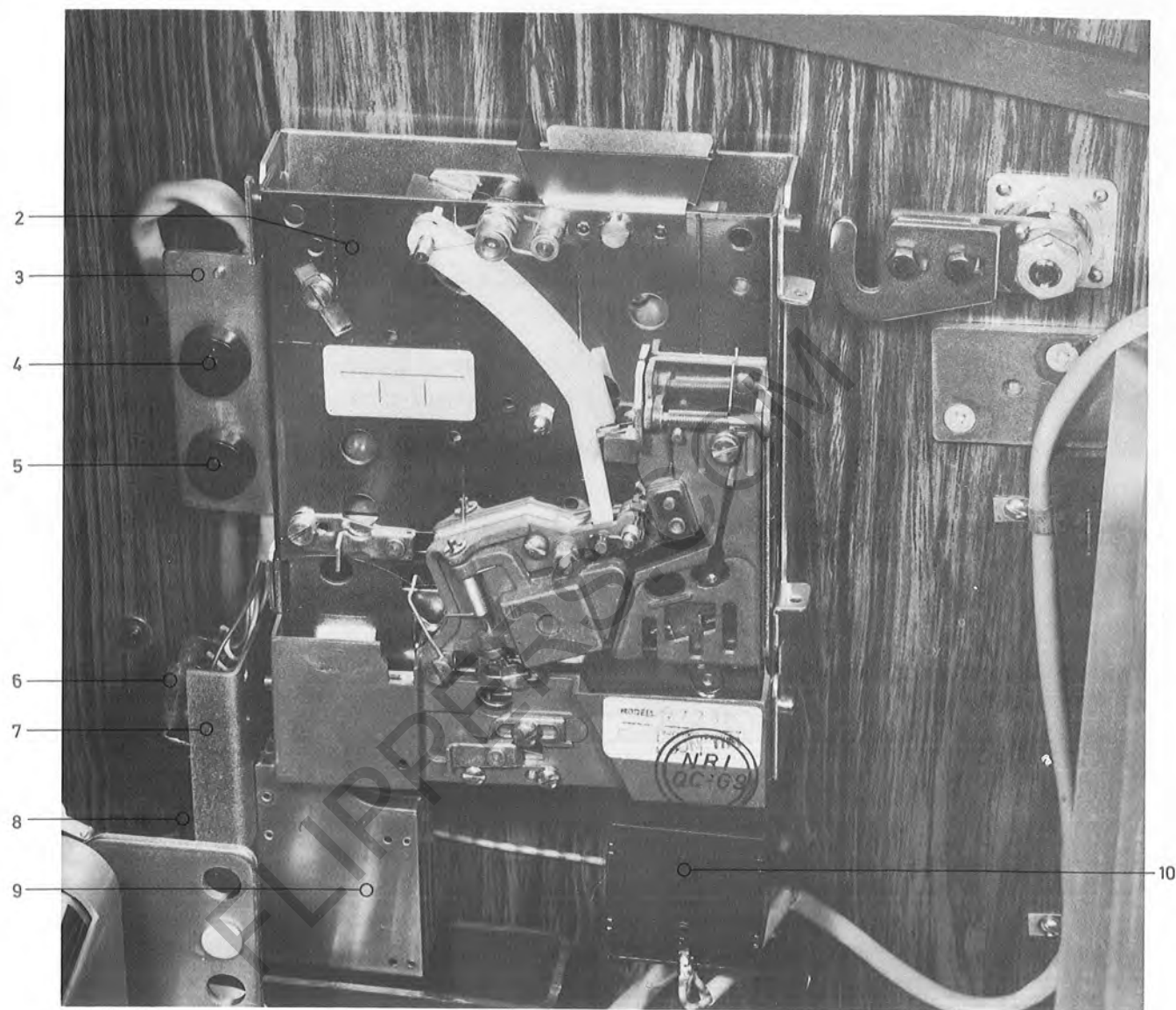
Record drive and tonearm



POSITION	DESCRIPTION	PART NUMBER	QTY
94M	CONTINUED 3		
95	---NUT BM 5 DIN 439		1
96	---PRESSURE SPRING	205147	1
97	---SCREW AM 3X16 DIN 7985		1
98	---ECCENTRIC WASHER	29037	1
99	---SCREW AM 3X6 DIN 7985		1
100	---COUNTERWEIGHT HOLDER ASSEMBLY	41020	1
101	---LOCKWASHER 3		1
102	---COUNTERWEIGHT	22103	1
103	---LOCKING SCREW M 3X6 DIN 417		1
104	---TONE ARM ASSEMBLY	41528	1
105	---ROLLER	22031	1
106	---PIN	22032	1
107	---TONE ARM CABLE TYP 319a Y (c) Y	227340	1
108	---GROMMET	207446	1
109	---CARTRIDGE MONO WITH DIAMONDS	224079	1
110	---SCREW CM 1,7X13 DIN 85		1
111	---NUT BM 1,7 DIN 439		1
112	---LOCKING SCREW	22892	1
113	---NUT M 6 DIN 934		1
114	---NUT BM 6 DIN 439		1
115	---TONE ARM SPRING ASSEMBLY	41505	2
116	---WASHER 3,2 DIN 433		2
117	---SCREW AM 3X4 DIN 7985		2
118	---SHIELDING CAP	22147	1
119	---3 PRONG SOCKET MAB 3 S	225030	1
120	---LUG	229018	2
121	---SCREW AM 2,6X6 DIN 7985		2
122	---NUT BM 2,6 DIN 439		2
123	---SAFETY SPRING	205203	1
124	---GROMMET		1

SPARE PARTS LIST

Coin mechanism



POSITION	DESCRIPTION	PART NUMBER	QTY
1	COIN MECHANISM		
2	-COIN REJECTOR -ENGLAND	207237	1
3	-HOUSING ASSEMBLY	41759	1
4	--ADD. BUTTON	222089	1
5	--SUBTR. BUTTON	222089	1
6	-CAPACITOR 0,022 MF	220046	3
7	-COIN SWITCH	222100	1
8	-SWITCH LEVER	45047	3
9	-COIN CHANNEL WITH BRACKET	41761	1
10	-COIN RETURN CUP	41576	1

SPARE PARTS LIST

Volume control

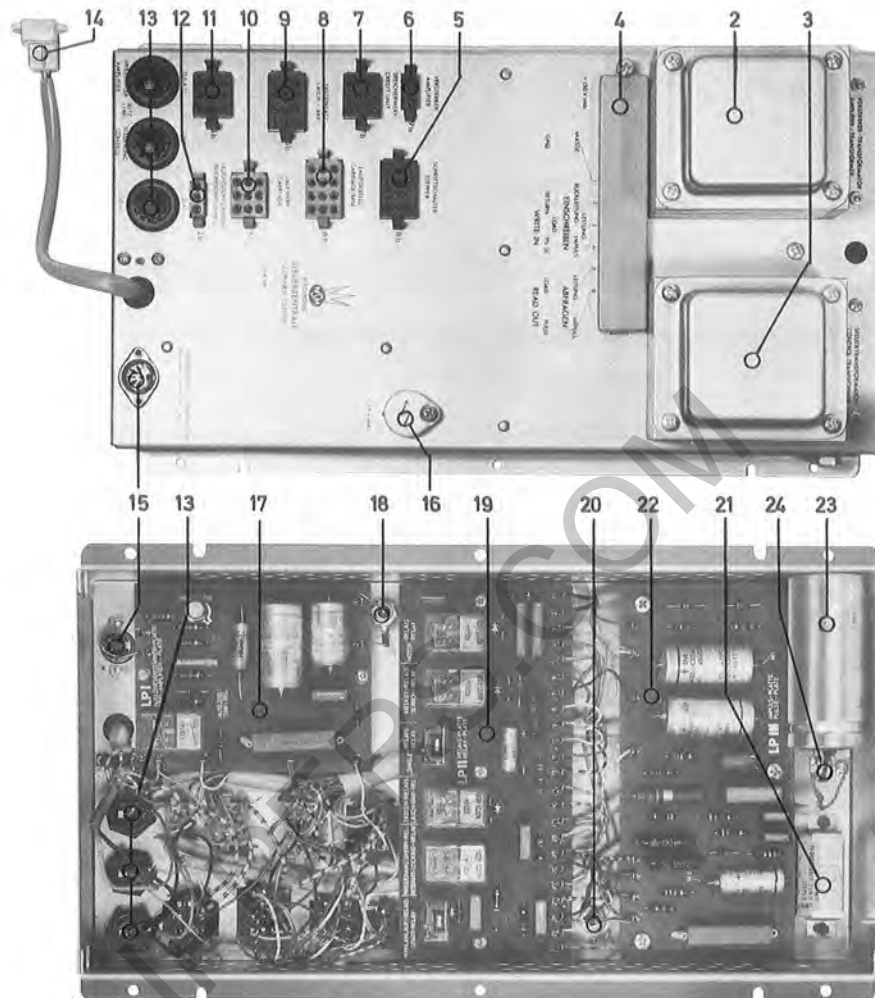


Volume Control R1 Order # 41479

One control and one reject button

SPARE PARTS LIST

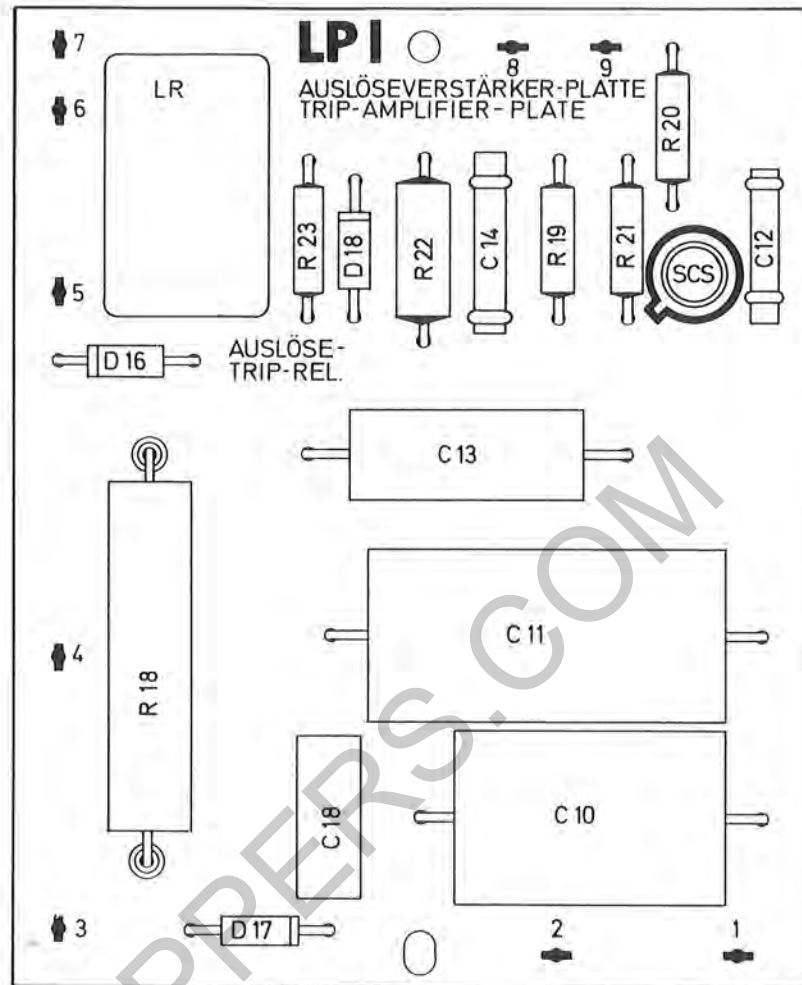
Control Centre 220/50



POSITION	DESCRIPTION	PART NUMBER	QTY
1	CONTROL CENTRE ASSEMBLY	41575	1
2	-AMPLIFIER TRANSFORMER WITH COVER	223194	1
3	-CONTROL TRANSFORMER WITH COVER	223193	1
4	-SAFETY COVER	29119	1
5	-AMP SOCKET 12 PRONG BLUE	23085	1
6	-AMP SOCKET 3 PRONG BLUE	23034	1
7	-AMP SOCKET 9 PRONG BLUE	23087	1
8	-AMP SOCKET 12 PRONG WHITE	225182	1
9	-AMP SOCKET 12 PRONG RED	22745	1
10	-AMP SOCKET 9 PRONG WHITE	225180	1
11	-AMP SOCKET 9 PRONG RED	23086	1
12	-AMP SOCKET 3 PRONG WHITE	225174	1
13	-FUSEHOLDER COMPLETE	225138	3
13	FUSE 2 AMP SLO BLO	225020	1
13	FUSE 0,6 AMP SLO BLO	225115	1
13	FUSE 1,6 AMP SLO BLO	225195	1
14	-AMP PLUG 6 PRONG WHITE	225176	1
15	-METAL SOCKET 3 PRONG	225030	1
16	-SAFETY COVER	29039	1
17	-TRIP AMPLIFIER PLATE ASSY LP I	SEE PAGE S 100	
18	-ZENNERDIODE ZL 27	227117	1
19	-RELAY PLATE ASSY LP II	SEE PAGE S 200	
20	-ZENNERDIODE ZL 150	221118	1
21	-RECTIFIER WITH CLAMP	221122	2
22	-PULSE PLATE ASSY LP III	SEE PAGE S 300	
23	-MOTOR CAPACITOR 10 MF/150 V	220131	1
24	-VARISTOR E 299 DD/P344 S	221103	2

SPARE PARTS LIST

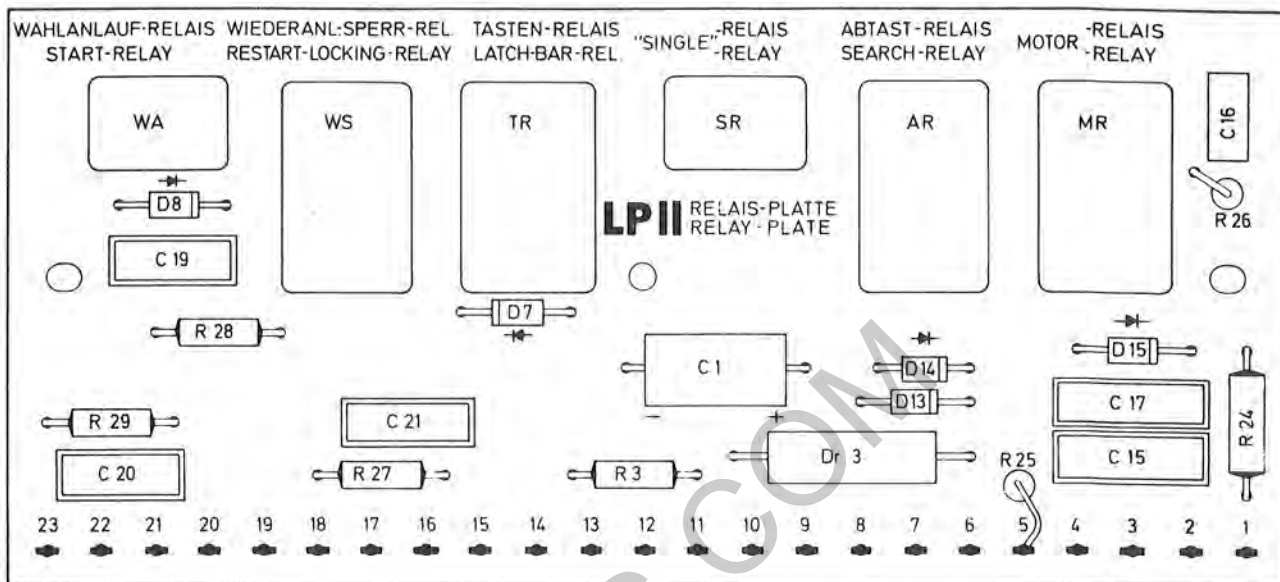
Control Centre 220/50



POSITION	DESCRIPTION	PART NUMBER	QTY	
	TRIP AMPLIFIER PLATE, LP I, ASSEMBLED	41474	1	
LR	--TRIP AMPLIFIER PLATE, WITHOUT PARTS	207385	1	
SCS	--TRIP RELAY 2 HIGH VOLTAGE CONTACTS	223182	1	
	--SILICONE CONTROLLED SWITCH BRY 20	221121	1	
	HEATSINK WASHER	202760	1	
R18	--WIRE WOUND RESISTOR, CHINA 100 OHM	221139	1	
R18	CERAMIC SPACER	221123	2	
R19	--CARBON RESISTOR 150 OHM	221147	1	
R20	--CARBON RESISTOR (WITH BRY 20 WHITE) 220 OHM	221137	AR	
	CARBON RESISTOR (WITH BRY 20 YELLOW) 180 OHM	221101	AR	
	CARBON RESISTOR (WITH BRY 20 GREEN) 150 OHM	221147	AR	
	CARBON RESISTOR (WITH BRY 20 RED) 120 OHM	221150	AR	
R21	--CARBON RESISTOR 150 OHM	221147	1	
R22	--CARBON RESISTOR 1 K OHM	221136	1	
R23	--CARBON RESISTOR 100 OHM	221134	1	
C10	--LYTIC 250 MF 70/80 V	220065	1	
C11	--LYTIC 1000 MF 35/40 V	220107	1	
C12	--CERAMIC 4,7 nF	220129	1	
C13	--LYTIC 100 MF 35/40 V	220105	1	
C14	--CERAMIC 6,8 nF	220128	1	
C18	--MYLAR 0,22 MF 250 V	220077	1	
D16	--SILICONE DIODE 400 V 1N 4004	221115	1	
D17	--SILICONE DIODE 400 V 1N 4004	221115	1	
D18	--SILICONE DIODE 400 V 1N 4004	221115	1	

SPARE PARTS LIST

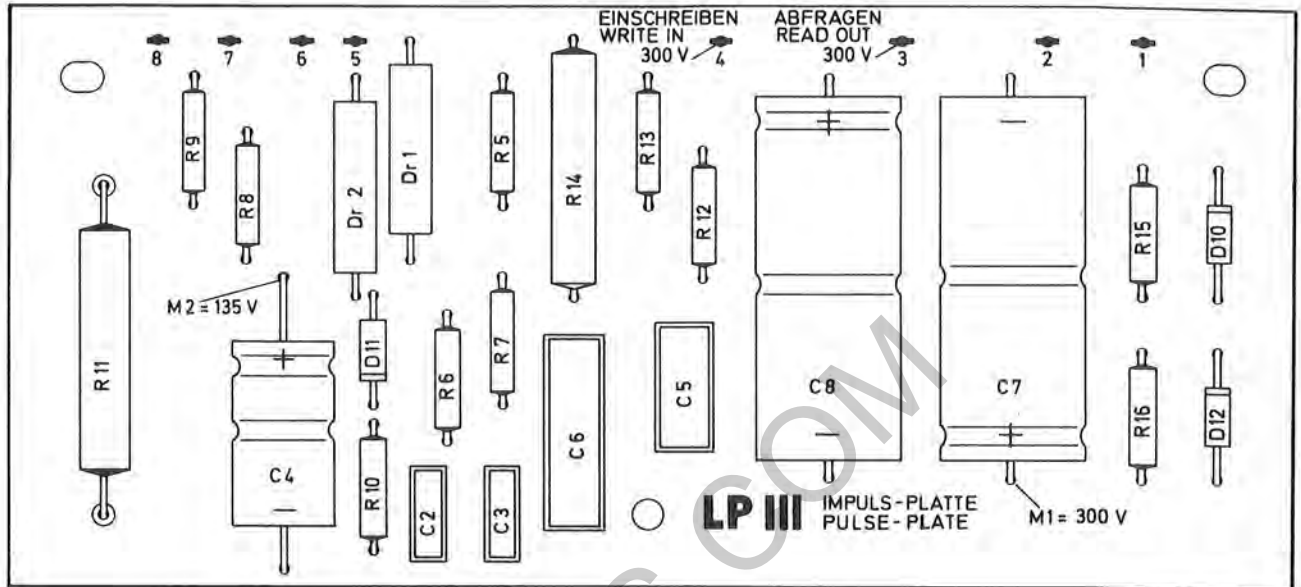
Control Centre 220/50



POSITION	DESCRIPTION	PART NUMBER	QTY
	RELAY PLATE, LP II, ASSEMBLED	41473	1
	--RELAY PLATE, WITHOUT PARTS	207384	1
WA	--START RELAY 1 HIGH VOLTAGE CONTACT	223183	1
WS	--RESTART LOCKING RELAY 4 LOW VOLTAGE CONTACTS	223180	1
TR	--LATCH BAR RELAY 2 HIGH VOLTAGE CONTACTS	223182	1
SR	--SINGLE RELAY 1 HIGH VOLTAGE CONTACT	223183	1
AR	--SEARCH RELAY 2 HIGH VOLTAGE CONTACTS	223182	1
MR	--MOTOR RELAY 2 HIGH VOLTAGE CONTACTS	223182	1
R3	--RESISTOR 33 OHM	221133	1
R24	--RESISTOR 1 K OHM	221136	1
R25	--RESISTOR 33 OHM	221133	1
R26	--RESISTOR 270 OHM	221096	1
R27	--RESISTOR 47 OHM	221129	1
R28	--RESISTOR 47 OHM	221129	1
R29	--RESISTOR 47 OHM	221129	1
C1	--LYTIC 50 MF 35/40 V	220103	1
C15	--MYLAR 0,22 MF 250 V	220127	1
C16	--MYLAR 0,022 MF 630 V	220122	1
C17	--MYLAR 0,022 MF 400 V	220127	1
C19	--MYLAR 0,22 MF 250 V	220077	1
C20	--MYLAR 0,22 MF 250 V	220077	1
C21	--MYLAR 0,22 MF 250 V	220077	1
DR3	--INDUCTOR 130 MH	221146	1
D7	--SILICONE DIODE 400 V	221115	1
D8	--SILICONE DIODE 400 V	221115	1
D13	--SILICONE DIODE 600 V	221119	1
D14	--SILICONE DIODE 400 V	221115	1
D15	--SILICONE DIODE 400 V	221115	1

SPARE PARTS LIST

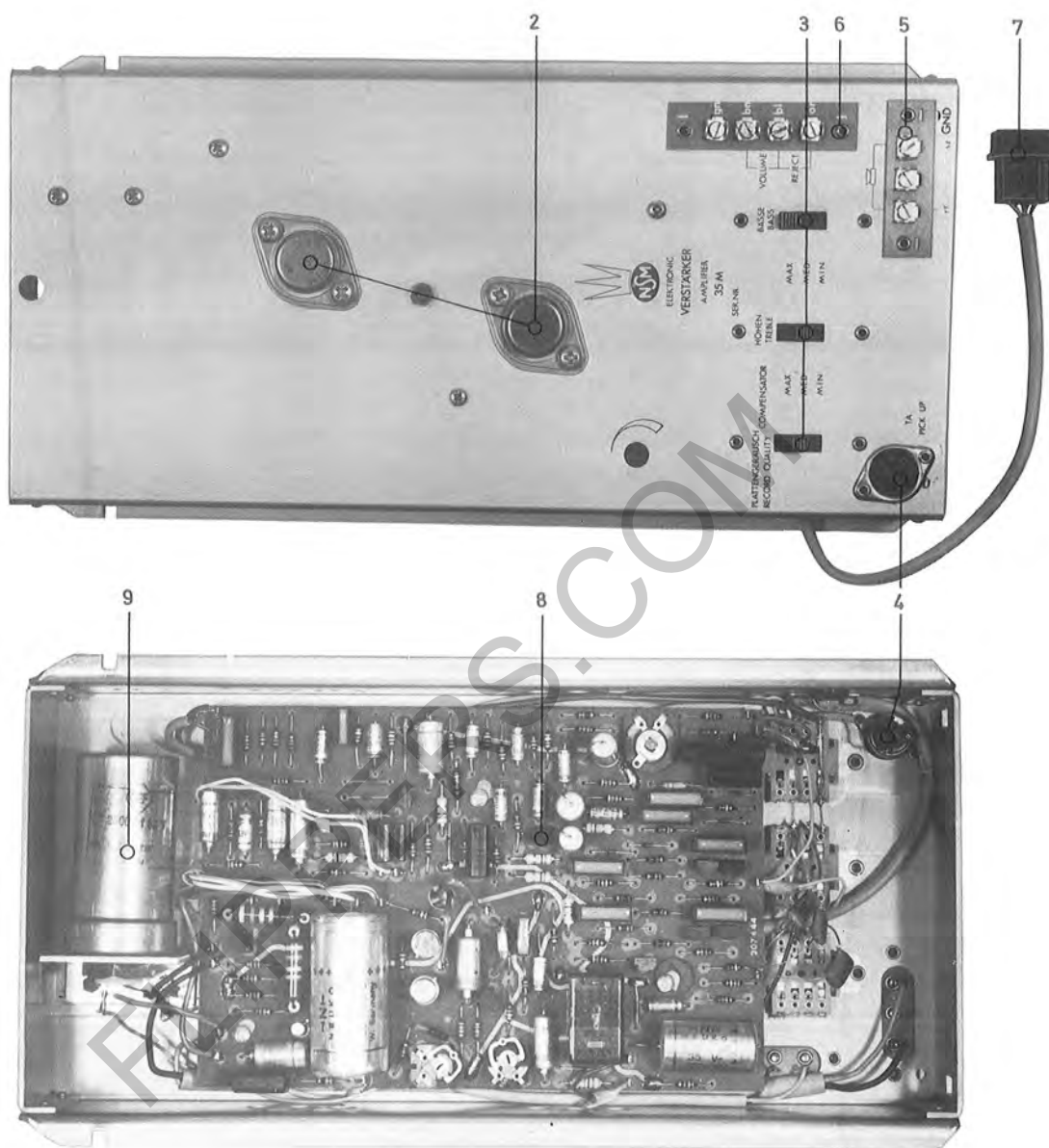
Control Centre 220/50



POSITION	DESCRIPTION	PART NUMBER	QTY
	PULSE PLATE, LP III, ASSEMBLED	41472	1
	--PULSE PLATE, WITHOUT PARTS	207383	1
R5	--CARBON RESISTOR 47 OHM	221129	1
R6	--CARBON RESISTOR 47 OHM	221129	1
R7	--CARBON RESISTOR 47 OHM	221129	1
R8	--CARBON RESISTOR 33 K OHM	221131	1
R9	--CARBON RESISTOR, WITH ZL 150 (130-140 V) 1 K OHM	221025	AR
	CARBON RESISTOR, WITH ZL 150 (140-150 V) 10 K OHM	221028	AR
R10	CARBON RESISTOR, WITH ZL 150 (150-165 V) 22 K OHM	221114	AR
R11	--CARBON RESISTOR 150 K OHM	221130	1
	--WIRE WOUND RESISTOR 7,5 K OHM	221140	1
	CERAMIC SPACER	221123	2
R12	--CARBON RESISTOR 270 K OHM	221126	1
R13	--CARBON RESISTOR 150 K OHM	221147	1
R14	--CARBON RESISTOR 56 K OHM	221128	1
R15	--CARBON RESISTOR 1 M OHM	221125	1
R16	--CARBON RESISTOR 1 M OHM	221125	1
DR1	--INDUCTOR 130 MH	221146	1
DR2	--INDUCTOR 100 MH	221145	1
C2	--MYLAR 0,033 MF 400 V	220114	1
C3	--MYLAR 0,01 MF 630 V	220125	1
C4	--LYTIC 8 MF 350/385 V	220119	1
C5	--MYLAR 0,15 MF 400 V	220117	1
C6	--MYLAR 0,15 MF 630 V	220126	1
C7	--LYTIC 16 MF 450/500 V	220120	1
C8	--LYTIC 16 MF 450/500 V	220120	1
D10	--SILICONE DIODE 600 V	221119	1
D11	--SILICONE DIODE 400 V	221115	1
D12	--SILICONE DIODE 600 V	221119	1

SPARE PARTS LIST

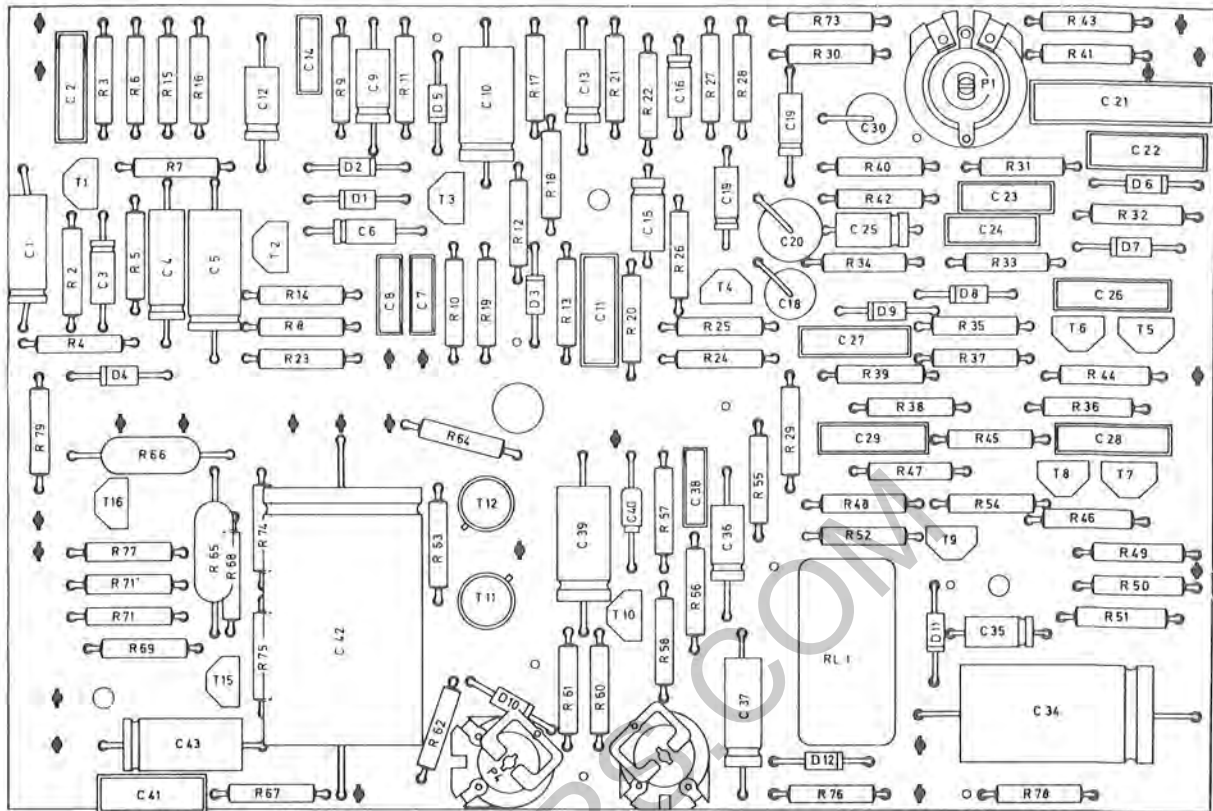
Transistor - Amplifier 35 M



POSITION	DESCRIPTION	PART NUMBER	QTY
1	AMPLIFIER ASSEMBLY	41600	1
2	-POWER TRANSISTOR 2N 3055 RCA	221106	2
3	-SLIDERSWITCH	222151	3
4	-METAL SOCKET MAB 3 S	225030	1
5	-CONNECTOR PLATE, OUTPUT	222257	1
6	-CONNECTOR PLATE, REMOTE CONTROL	222206	1
7	-AMP PLUG 3 PRONG	225175	1
8	-PRINTED CIRCUIT PLATE SEE PAGE VM 100		
9	-ELKO 2500 MF/70 V	220135	1
9	BRACKET FOR CAPACITOR	23354	1

SPARE PARTS LIST

Transistor - Amplifier 35 M

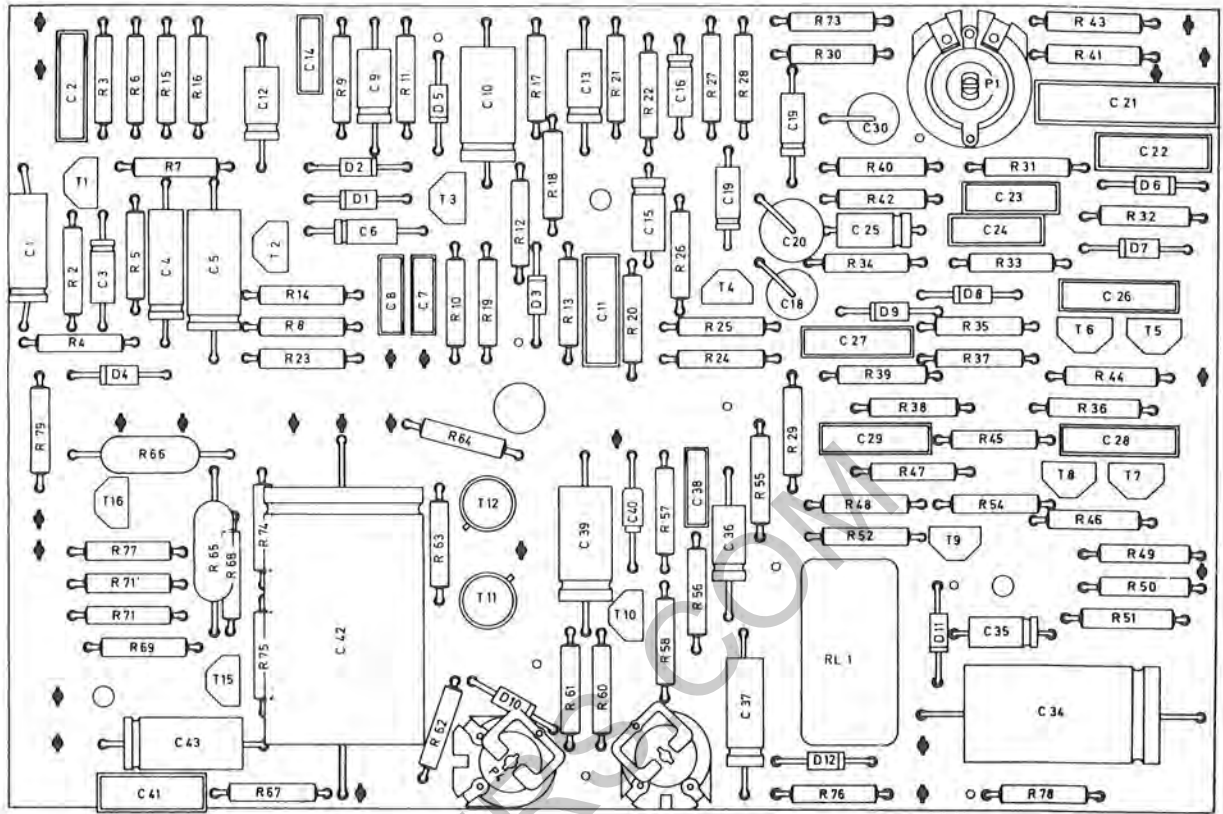


POSITION	DESCRIPTION	PART NUMBER	QTY
R 2	PLATE ASSEMBLED	41685	
R 3	CARBON RESISTOR		
R 4	CARBON RESISTOR		
R 5	CARBON RESISTOR		
R 6	CARBON RESISTOR		
R 7	CARBON RESISTOR		
R 8	CARBON RESISTOR		
R 9	CARBON RESISTOR		
R10	CARBON RESISTOR		
R11	CARBON RESISTOR		
R12	CARBON RESISTOR		
R13	CARBON RESISTOR		
R14	CARBON RESISTOR		
R15	CARBON RESISTOR		
R16	CARBON RESISTOR		
R17	CARBON RESISTOR		
R18	CARBON RESISTOR		
R19	CARBON RESISTOR		
R20	CARBON RESISTOR		
R21	CARBON RESISTOR		
R22	CARBON RESISTOR		
R23	CARBON RESISTOR		
R24	CARBON RESISTOR		
R25	CARBON RESISTOR		
R26	CARBON RESISTOR		
R27	CARBON RESISTOR		
R28	CARBON RESISTOR		
R29	CARBON RESISTOR		
R30	CARBON RESISTOR		
R31	CARBON RESISTOR		
R32	CARBON RESISTOR		
R33	CARBON RESISTOR		
R34	CARBON RESISTOR		
R35	CARBON RESISTOR		
R36	CARBON RESISTOR		
R37	CARBON RESISTOR		
R38	CARBON RESISTOR		
R39	CARBON RESISTOR		
R40	CARBON RESISTOR		

CONTINUED 1

SPARE PARTS LIST

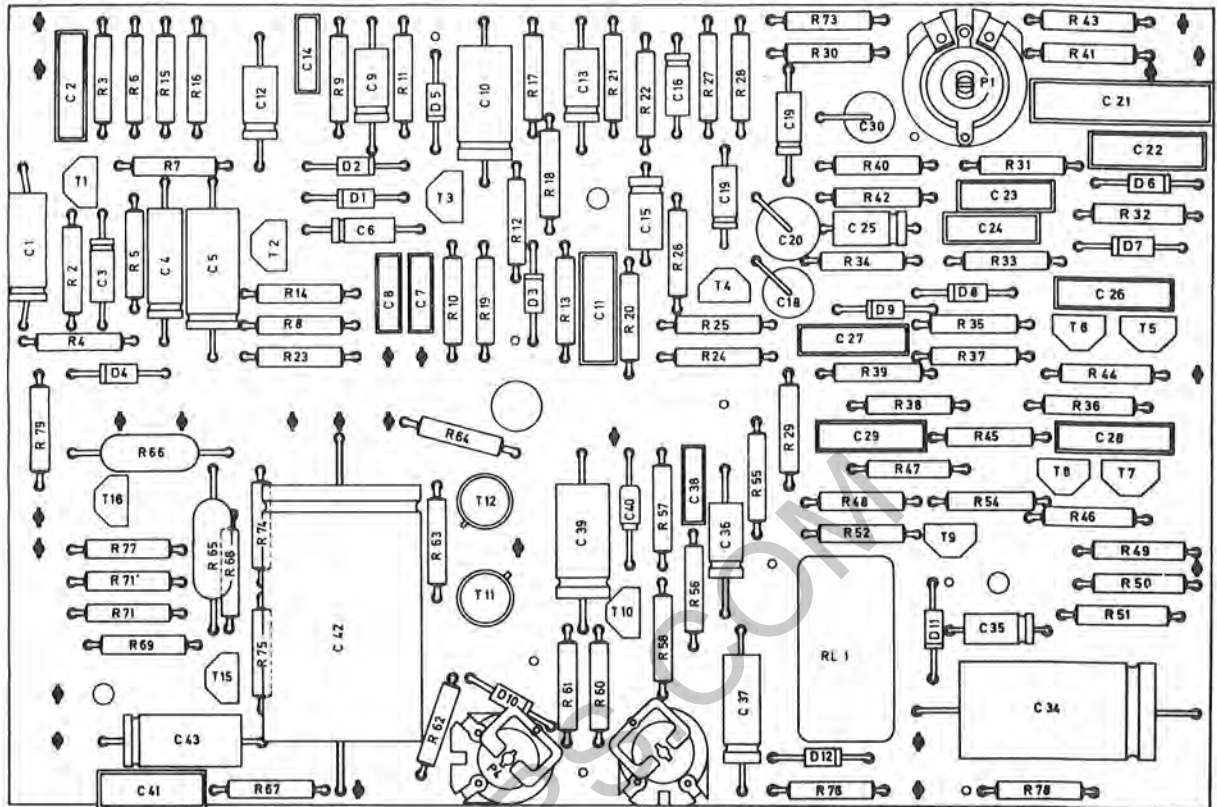
Transistor - Amplifier 35 M



POSITION	DESCRIPTION	PART NUMBER	QTY
R41	CONTINUED 1 CARBON RESISTOR	15 Ohm	$\frac{1}{3}W \pm 10\%$
R42	CARBON RESISTOR	4 700 Ohm	$\frac{1}{3}W \pm 10\%$
R43	CARBON RESISTOR	4 700 Ohm	$\frac{1}{3}W \pm 10\%$
R44	CARBON RESISTOR	3 900 Ohm	$\frac{1}{3}W \pm 10\%$
R45	CARBON RESISTOR	1 Megohm	$\frac{1}{3}W \pm 10\%$
R46	CARBON RESISTOR	5 600 Ohm	$\frac{1}{3}W \pm 10\%$
R47	CARBON RESISTOR	68 Ohm	$\frac{1}{3}W \pm 10\%$
R48	CARBON RESISTOR	220 000 Ohm	$\frac{1}{3}W \pm 10\%$
R49	CARBON RESISTOR	150 000 Ohm	$\frac{1}{3}W \pm 10\%$
R50	CARBON RESISTOR	220 000 Ohm	$\frac{1}{3}W \pm 10\%$
R51	CARBON RESISTOR	5 600 Ohm	$\frac{1}{3}W \pm 10\%$
R52	CARBON RESISTOR	4 700 Ohm	$\frac{1}{3}W \pm 10\%$
R54	CARBON RESISTOR	1 Megohm	$\frac{1}{3}W \pm 10\%$
R55	CARBON RESISTOR	1 000 Ohm	$\frac{1}{3}W \pm 10\%$
R56	CARBON RESISTOR	1 000 Ohm	$\frac{1}{3}W \pm 10\%$
R57	CARBON RESISTOR	1 200 Ohm	$\frac{1}{3}W \pm 10\%$
R58	CARBON RESISTOR	12 000 Ohm	$\frac{1}{3}W \pm 10\%$
R60	CARBON RESISTOR	1 800 Ohm	$\frac{1}{3}W \pm 10\%$
R61	CARBON RESISTOR	2 700 Ohm	$\frac{1}{3}W \pm 10\%$
R62	CARBON RESISTOR	560 Ohm	$\frac{1}{3}W \pm 10\%$
R63	CARBON RESISTOR	330 Ohm	$\frac{1}{3}W \pm 10\%$
R64	CARBON RESISTOR	330 Ohm	$\frac{1}{3}W \pm 10\%$
R65	WIRE RESISTOR	0.47 Ohm	2 W $\pm 10\%$
R66	WIRE RESISTOR	0.47 Ohm	2 W $\pm 10\%$
R67	CARBON RESISTOR	22 Ohm	$\frac{1}{3}W \pm 10\%$
R68	CARBON RESISTOR	8 200 Ohm	$\frac{1}{3}W \pm 5\%$
R69	CARBON RESISTOR	5 600 Ohm	$\frac{1}{3}W \pm 5\%$
R71/R71'	CARBON RESISTOR	4 700 Ohm	$\frac{1}{3}W \pm 5\%$
R73	CARBON RESISTOR	68 Ohm	$\frac{1}{3}W \pm 10\%$
R74	CARBON RESISTOR	1 000 Ohm	$\frac{1}{3}W \pm 5\%$
R75	CARBON RESISTOR	1 200 Ohm	$\frac{1}{3}W \pm 5\%$
R76	CARBON RESISTOR	1 000 Ohm	$\frac{1}{3}W \pm 10\%$
R77	CARBON RESISTOR	4 700 Ohm	$\frac{1}{3}W \pm 10\%$
R78	CARBON RESISTOR	3 300 Ohm	$\frac{1}{3}W \pm 10\%$
R79	CARBON RESISTOR	180 Ohm	$\frac{1}{3}W \pm 5\%$
R1	MUTE RELAY	V23154— NO 721— B110 CONTINUED 2	

SPARE PARTS LIST

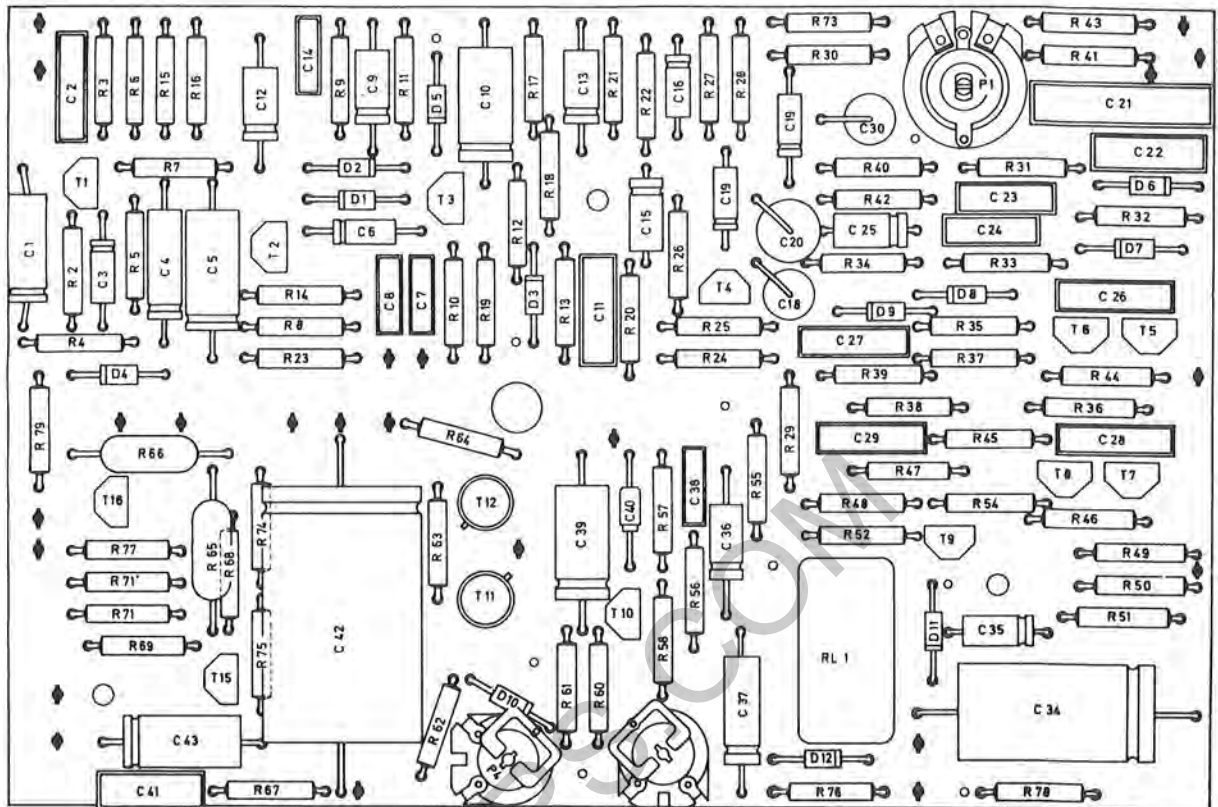
Transistor - Amplifier 35 M



POSITION	DESCRIPTION	PART NUMBER	QTY
P 1	CONTINUED 2		
P 3	TRIMMER RESISTOR	250 Ohm 1/3W lin.	
P 4	ADJUSTING RESISTOR	500 000 Ohm, lin.	
C 1	ADJUSTING RESISTOR	2 500 Ohm, lin.	
C 2	LYTIC	50 Mfd/15 V	
C 3	MYLAR	0.1 Mfd	
C 4	LYTIC	1 Mfd/35V	
C 5	LYTIC	50 Mfd/15 V	
C 6	LYTIC	50 Mfd/25 V	
C 7	LYTIC	10 Mfd	
C 8	MYLAR	0.033 Mfd	
C 9	MYLAR	0.015 Mfd/400 V	
C10	LYTIC	100 Mfd/ 3 V	
C11	LYTIC	250 Mfd/ 6 V	
C12	MYLAR	0.22 Mfd	
C13	LYTIC	25 Mfd/ 10 V	
C14	LYTIC	25 Mfd/ 10 V	
C15	MYLAR	0.01 Mfd	
C16	LYTIC	5 Mfd/ 35 V	
C17	LYTIC	10 Mfd/ 25 V	
C18	LYTIC	10 Mfd/ 25 V	
C19	LYTIC	50 Mfd/ 25 V	
C20	LYTIC	10 Mfd/ 25 V	
C21	LYTIC	100 Mfd/ 35 V	
C22	MYLAR	0.68 Mfd	
C23	MYLAR	0.22 Mfd	
C24	MYLAR	0.1 Mfd	
C25	MYLAR	0.1 Mfd	
C26	LYTIC	5 Mfd/ 35 V	
C27	MYLAR	0.1 Mfd	
C28	MYLAR	0.1 Mfd	
C29	MYLAR	0.1 Mfd	
C30	LYTIC	0.1 Mfd	
C31	LYTIC	250 Mfd/ 6 V	
C32	MYLAR	0.01 Mfd	
C33	MYLAR	0.033 Mfd	
C34	MYLAR	0.1 Mfd	
C35	LYTIC	500 Mfd	
	LYTIC	5 Mfd/ 35 V	
	CONTINUED 3		

SPARE PARTS LIST

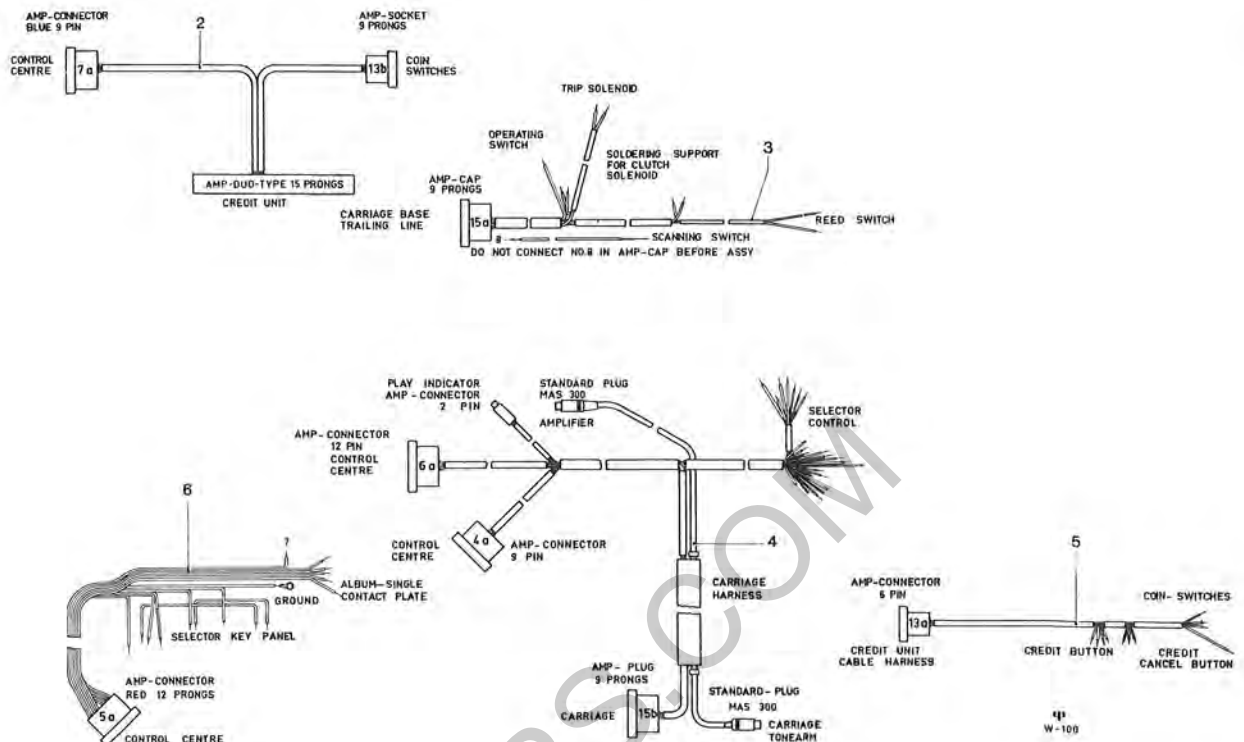
Transistor - Amplifier 35 M



POSITION	DESCRIPTION	PART NUMBER	QTY
	CONTINUED 3		
C36	LYTIC	25 Mfd/ 10 V	
C37	LYTIC	25 Mfd/ 35 V	
C38	MYLAR	0.01 Mfd	
C39	LYTIC	50 Mfd/ 35 V	
C40	MYLAR	0.001 Mfd/160 V	
C41	MYLAR	0.22 Mfd	
C42	LYTIC	2500 Mfd/ 35 V	
C43	LYTIC	250 Mfd/ 6 V	
C80	LYTIC	2500 Mfd/ 70 V	
D 1	SILICON DIODE	1 N 4148	
D 2	SILICON DIODE	1 N 4148	
D 3	SILICON DIODE	1 N 4148	
D 4	SILICON DIODE	1 N 4148	
D 5	SILICON DIODE	1 N 4148	
D 6	SILICON DIODE	1 N 4148	
D 7	SILICON DIODE	1 N 4148	
D 8	SILICON DIODE	1 N 4148	
D 9	SILICON DIODE	1 N 4148	
D10	ZENER DIODE	BZY 85 C4 V7	
D11	SILICON DIODE	1 N 4148	
D12	SILICON DIODE	1 N 4148	
T 1	TRANSISTOR	BC 149 B	
T 2	TRANSISTOR	BC 149 B	
T 3	TRANSISTOR	BC 147 B	
T 4	TRANSISTOR	BC 147 B	
T 5	TRANSISTOR	BC 147 B	
T 6	TRANSISTOR	BC 147 B	
T 7	TRANSISTOR	BC 147 B	
T 8	TRANSISTOR	BC 147 B	
T 9	TRANSISTOR	BC 147 B	
T10	TRANSISTOR	BC 147 B	
T11	TRANSISTOR	40361 RCA	
T12	TRANSISTOR	40362 RCA	
T13	TRANSISTOR	2N 3055 RCA	
T14	TRANSISTOR	2N 3055 RCA	
T15	TRANSISTOR	BC 177 VI/BC 157 A	
T16	TRANSISTOR	BC 147 B	

SPARE PARTS LIST

Cable Harnesses



POSITION	DESCRIPTION	PART NUMBER	QTY
1	CABLE HARNESSES		
2	-CABLE HARNESS CREDIT UNIT LEAD WIRE	41582	1
3	-CABLE HARNESS CARRIAGE	41507	1
4	-CABLE HARNESS SELECTOR CONTROL	41600	1
5	-CABLE HARNESS COIN SWITCHES	41577	1
6	-CABLE HARNESS CONTROL FOR SELECTOR KEY PANEL	41605	1