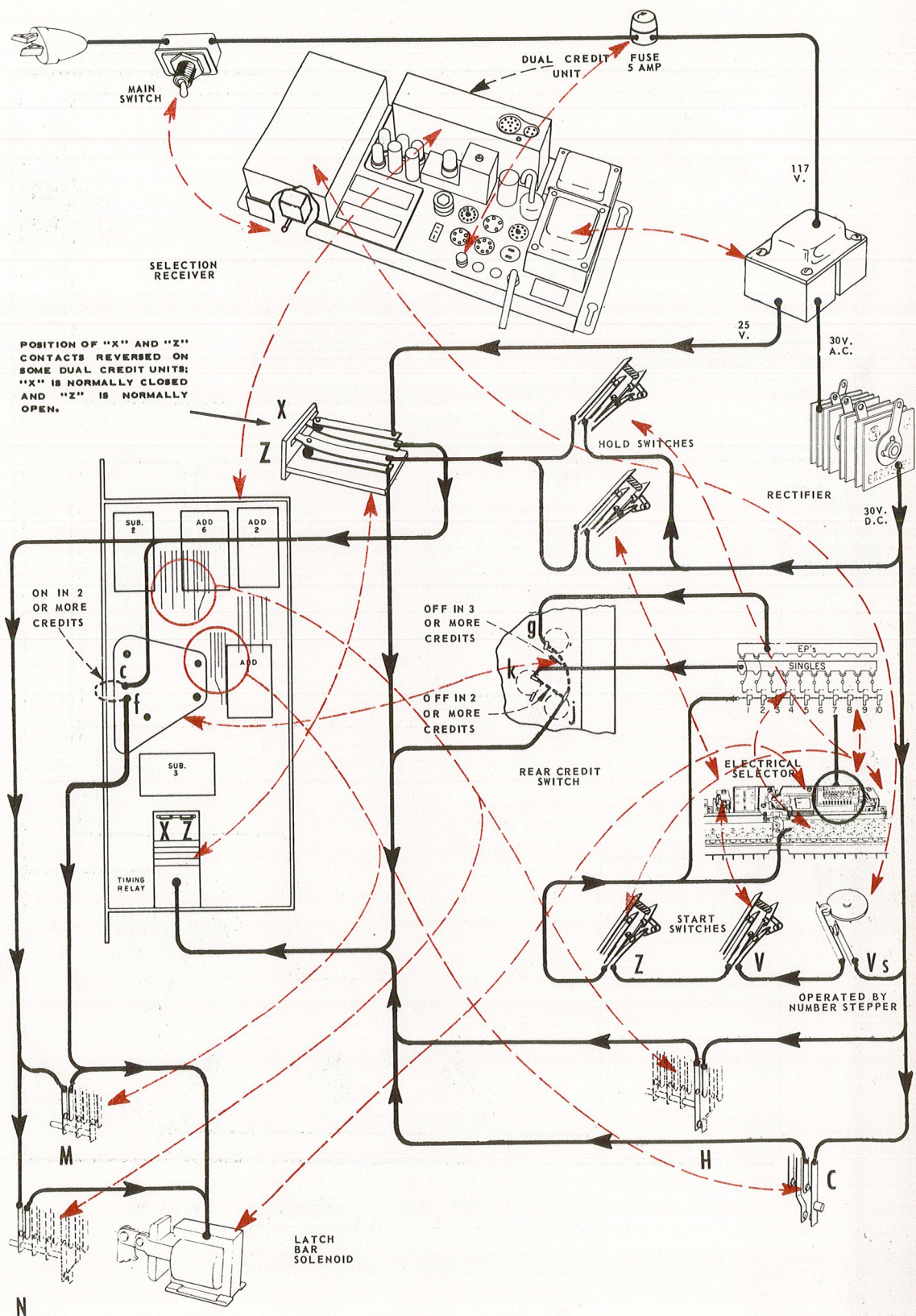
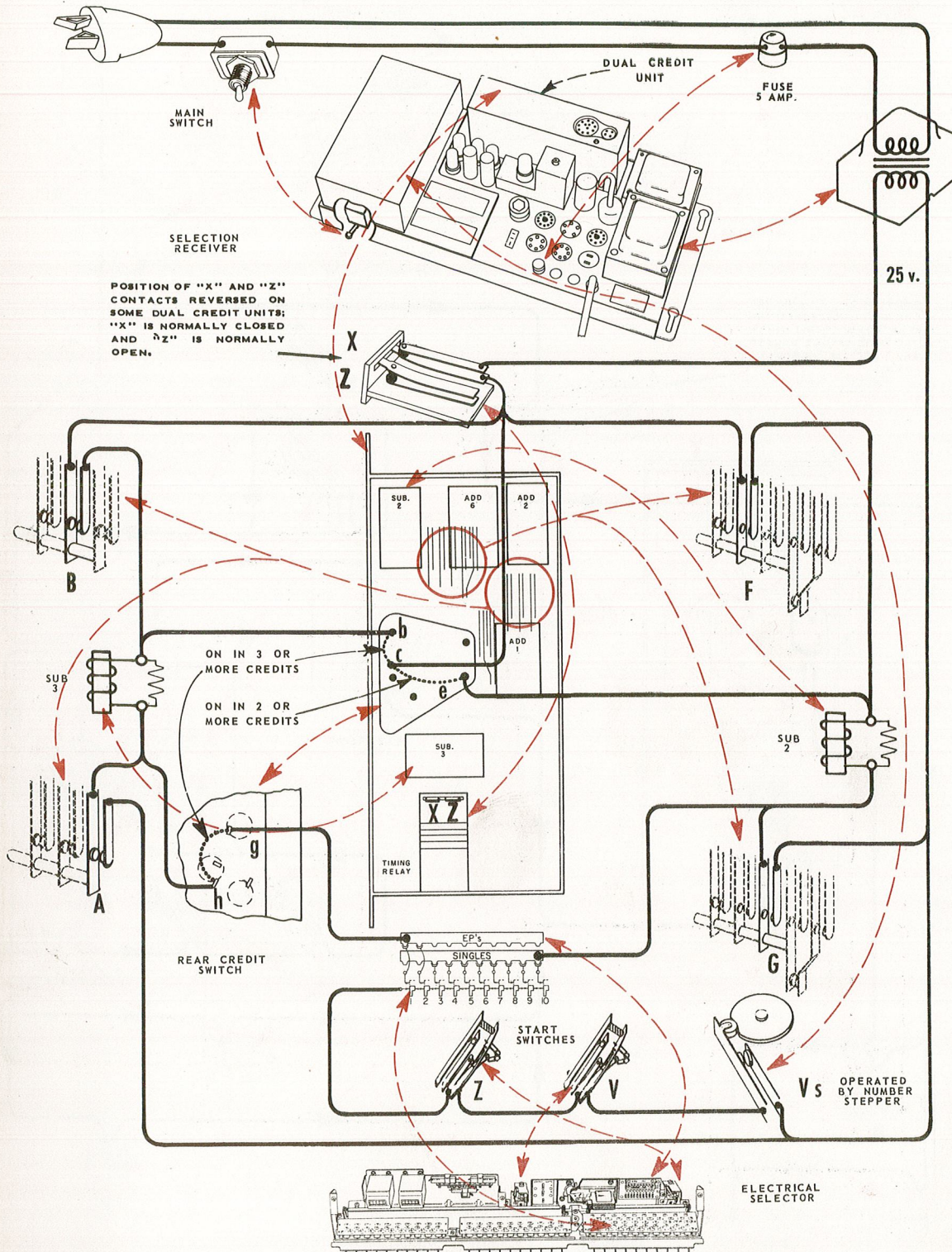


TIMING RELAY & LATCH BAR SOLENOIDS - Picture Diagram **Select-o-matic "200" - V-200** (NOT A SCHEMATIC OR WIRING DIAGRAM)



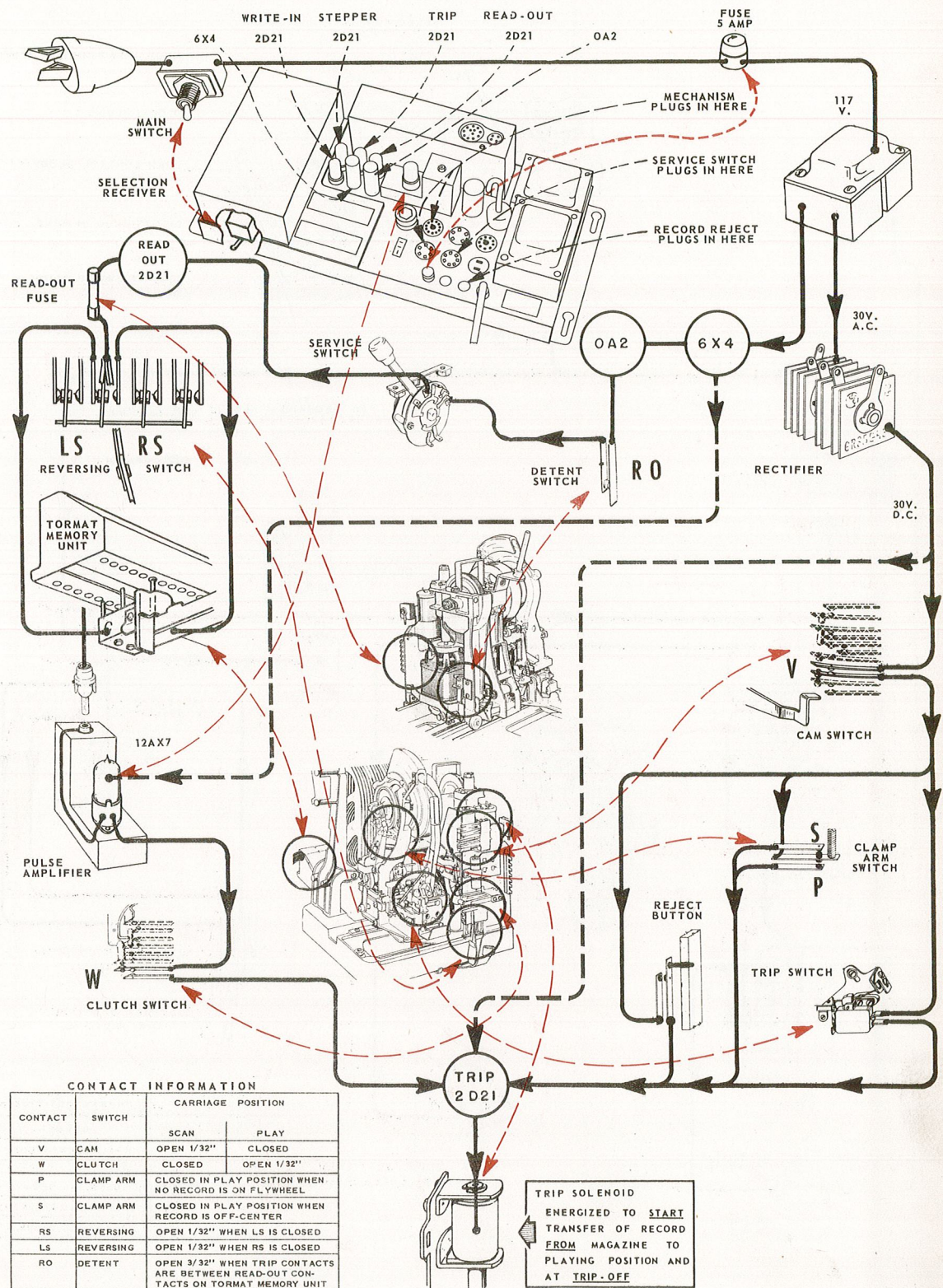
SUBTRACT SOLENOIDS - Picture Diagram Select-o-matic "200" - V-200



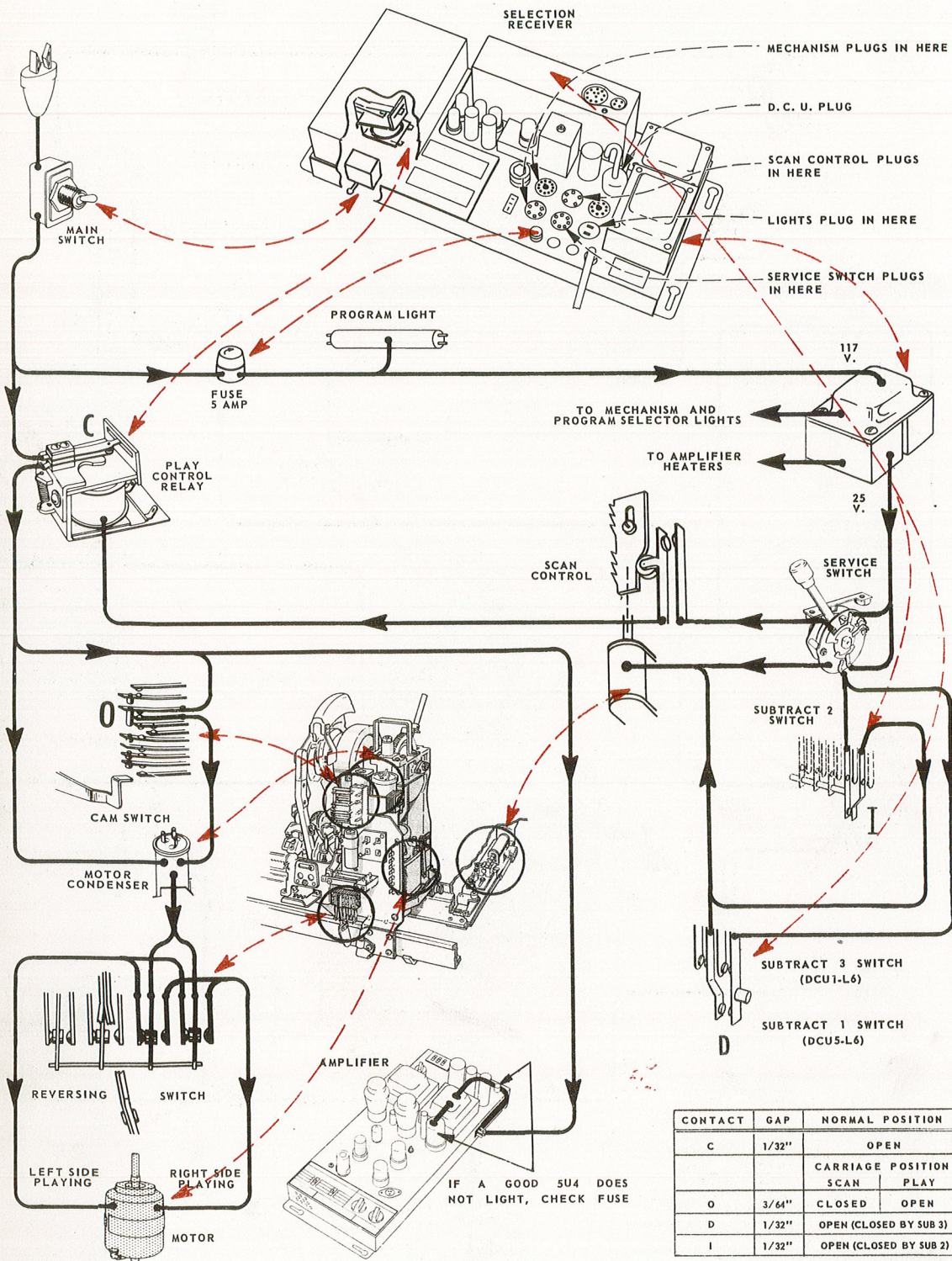
TRIP SOLENOID - Picture Diagram

Select-o-matic "200" - V-200

(NOT A SCHEMATIC OR WIRING DIAGRAM)



MOTOR & AMPLIFIER - Picture Diagram **Select-o-matic "200" - V-200** (NOT A SCHEMATIC OR WIRING DIAGRAM)

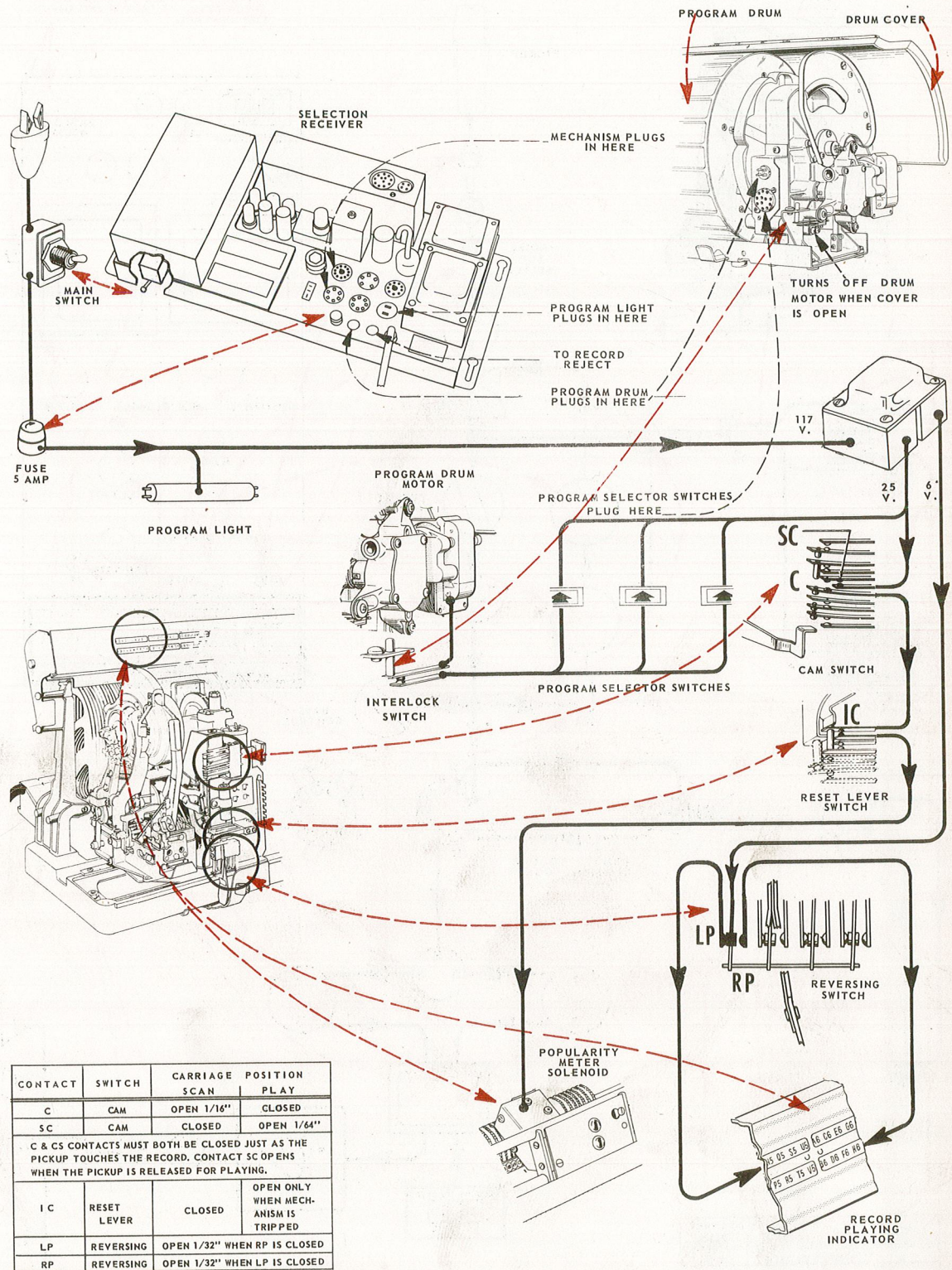


CONTACT	GAP	NORMAL POSITION	
C	1/32"	OPEN	
		CARRIAGE POSITION	
		SCAN	PLAY
O	3/64"	CLOSED	OPEN
D	1/32"	OPEN (CLOSED BY SUB 3)	
I	1/32"	OPEN (CLOSED BY SUB 2)	

POPULARITY METER & PROGRAM DRUM - Picture Diagram

Select-o-matic "200" - V-200

(NOT A SCHEMATIC OR WIRING DIAGRAM)

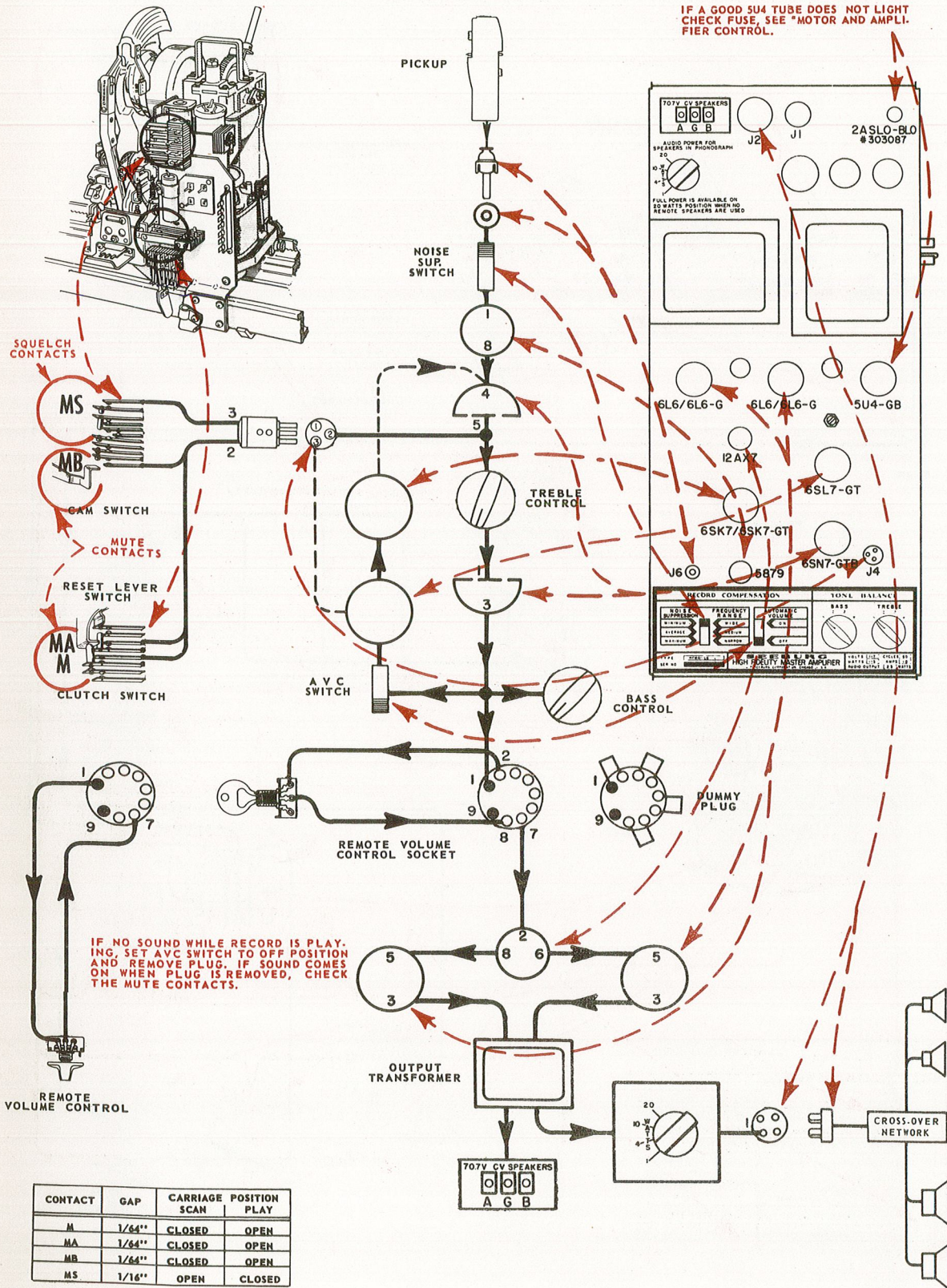


AMPLIFIER & SOUND - Picture Diagram

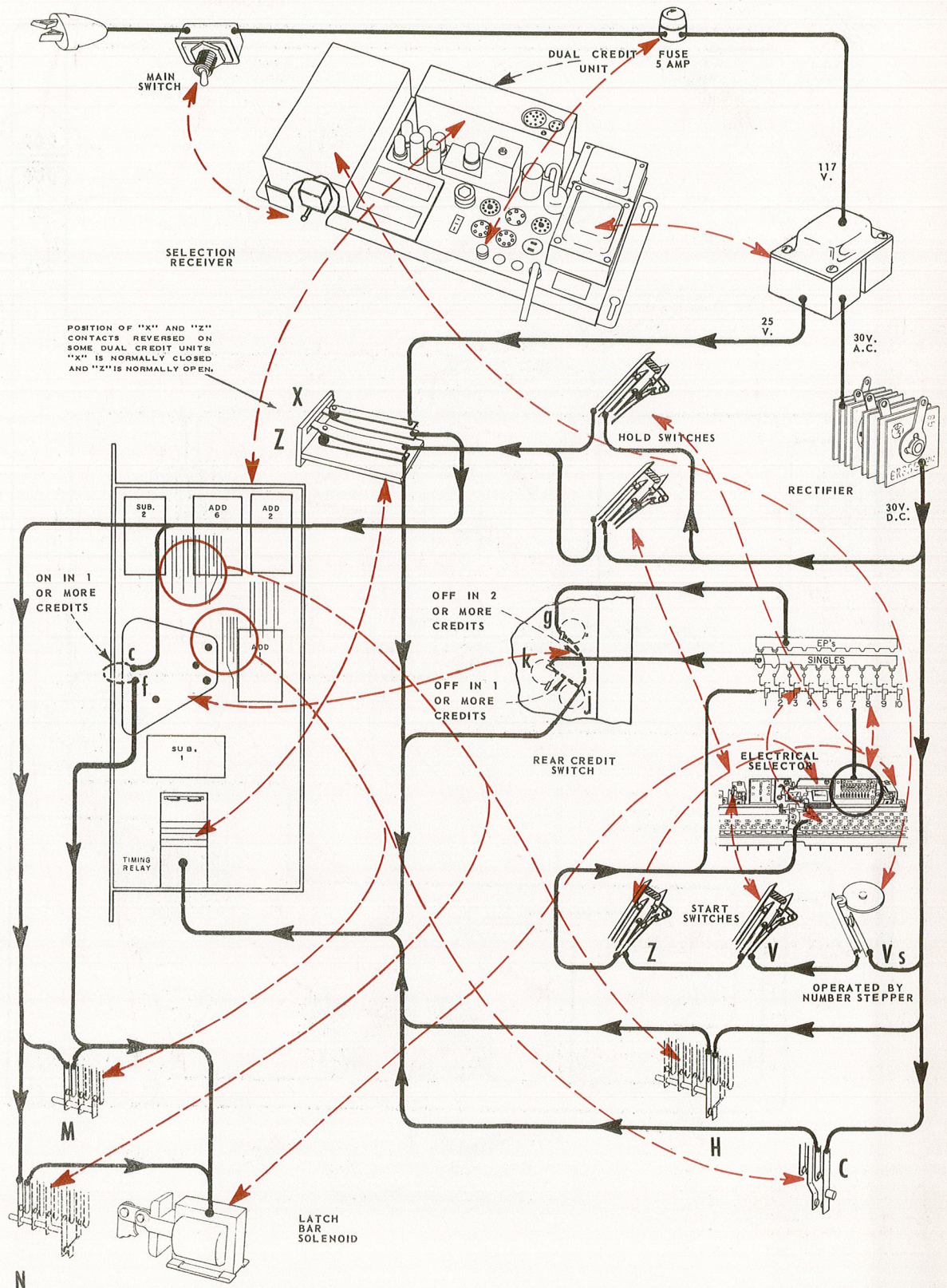
Select-o-matic "200" - V-200

(NOT A SCHEMATIC OR WIRING DIAGRAM)

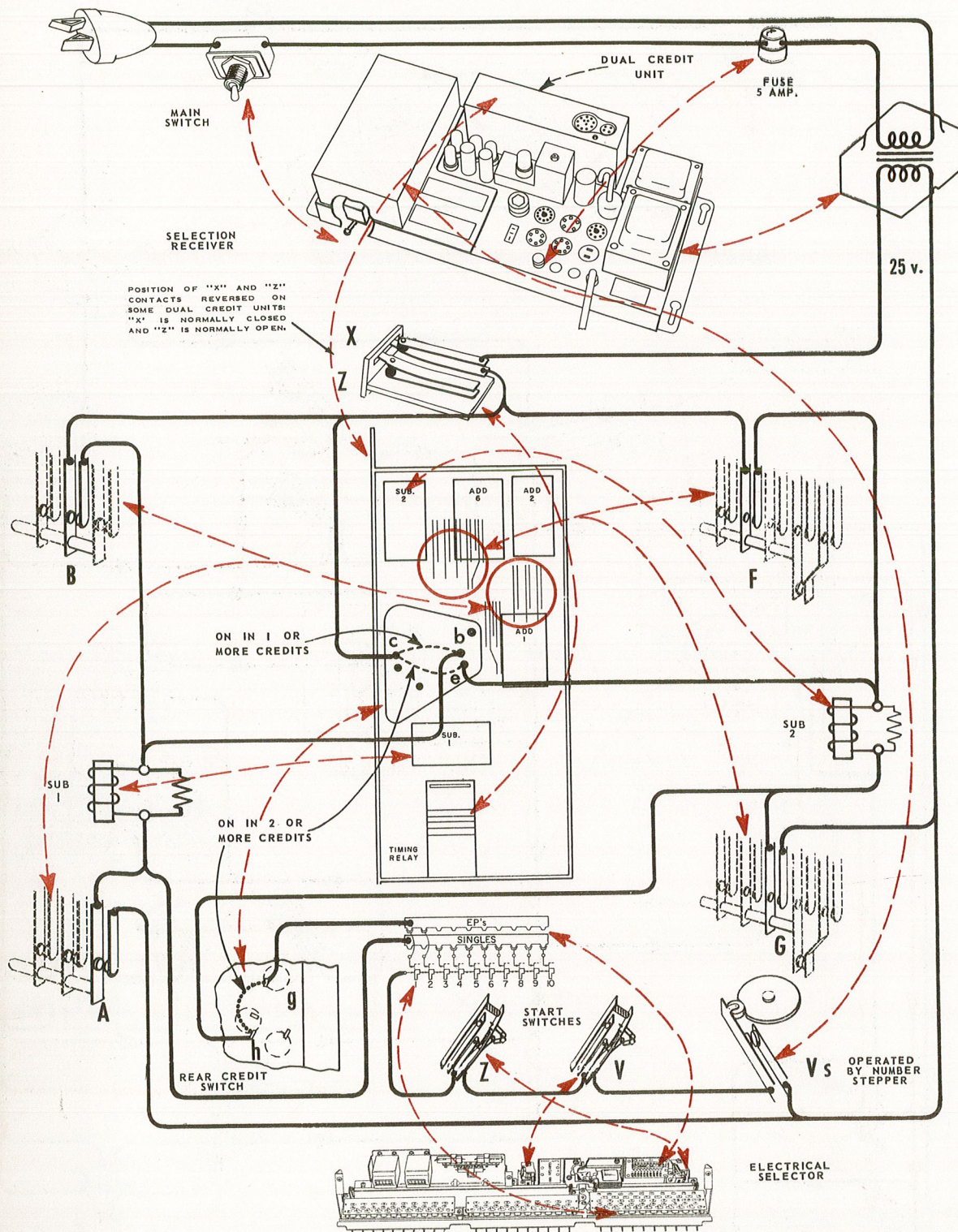
IF A GOOD 5U4 TUBE DOES NOT LIGHT
CHECK FUSE, SEE "MOTOR AND AMPLI-
FIER CONTROL."



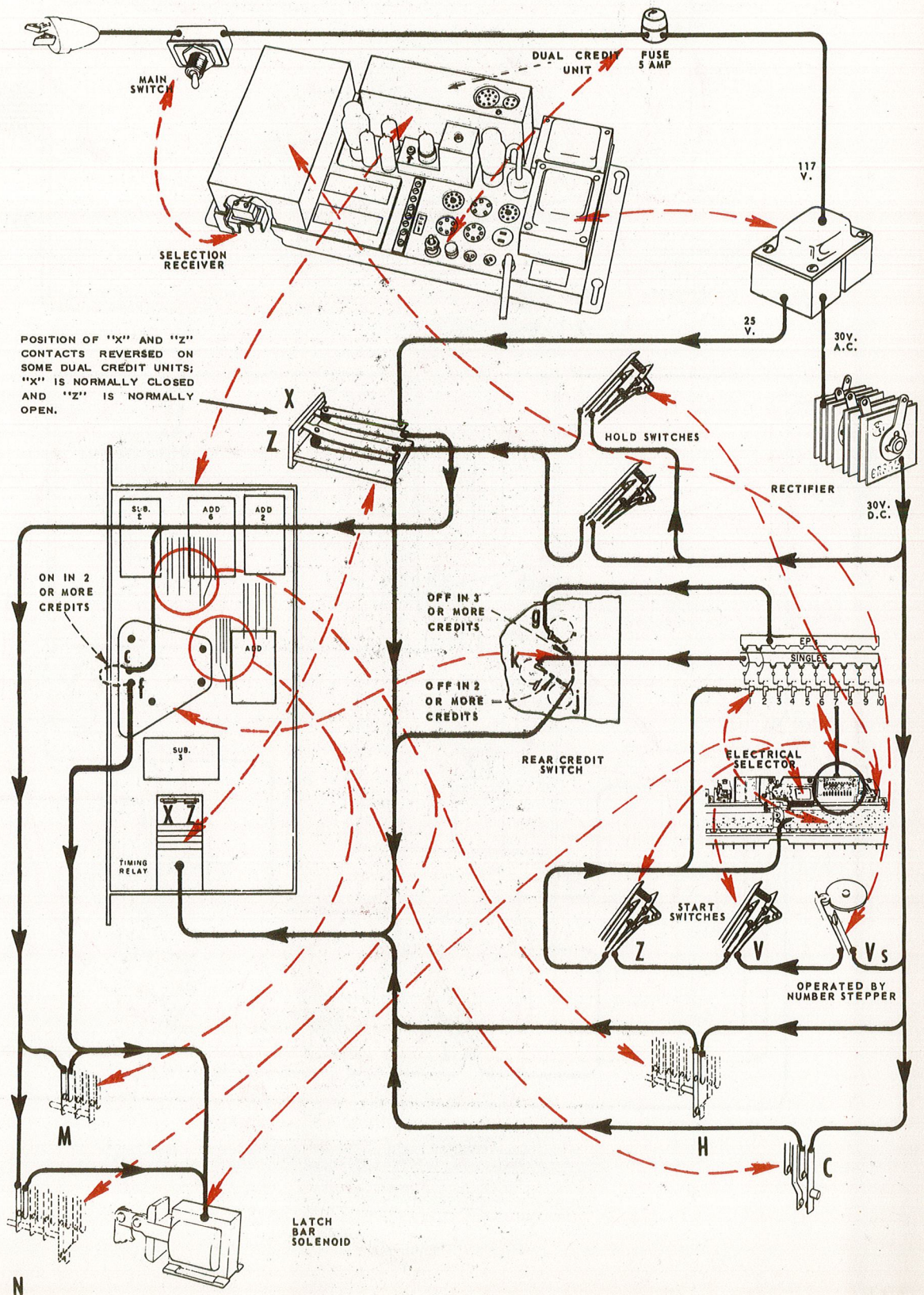
TIMING RELAY & LATCH BAR SOLENOIDS -Picture Diagram
Select-o-matic "200" - V-200-N
 (NOT A SCHEMATIC OR WIRING DIAGRAM)
 AS USED WITH DUAL CREDIT UNIT TYPE DCU5-L6



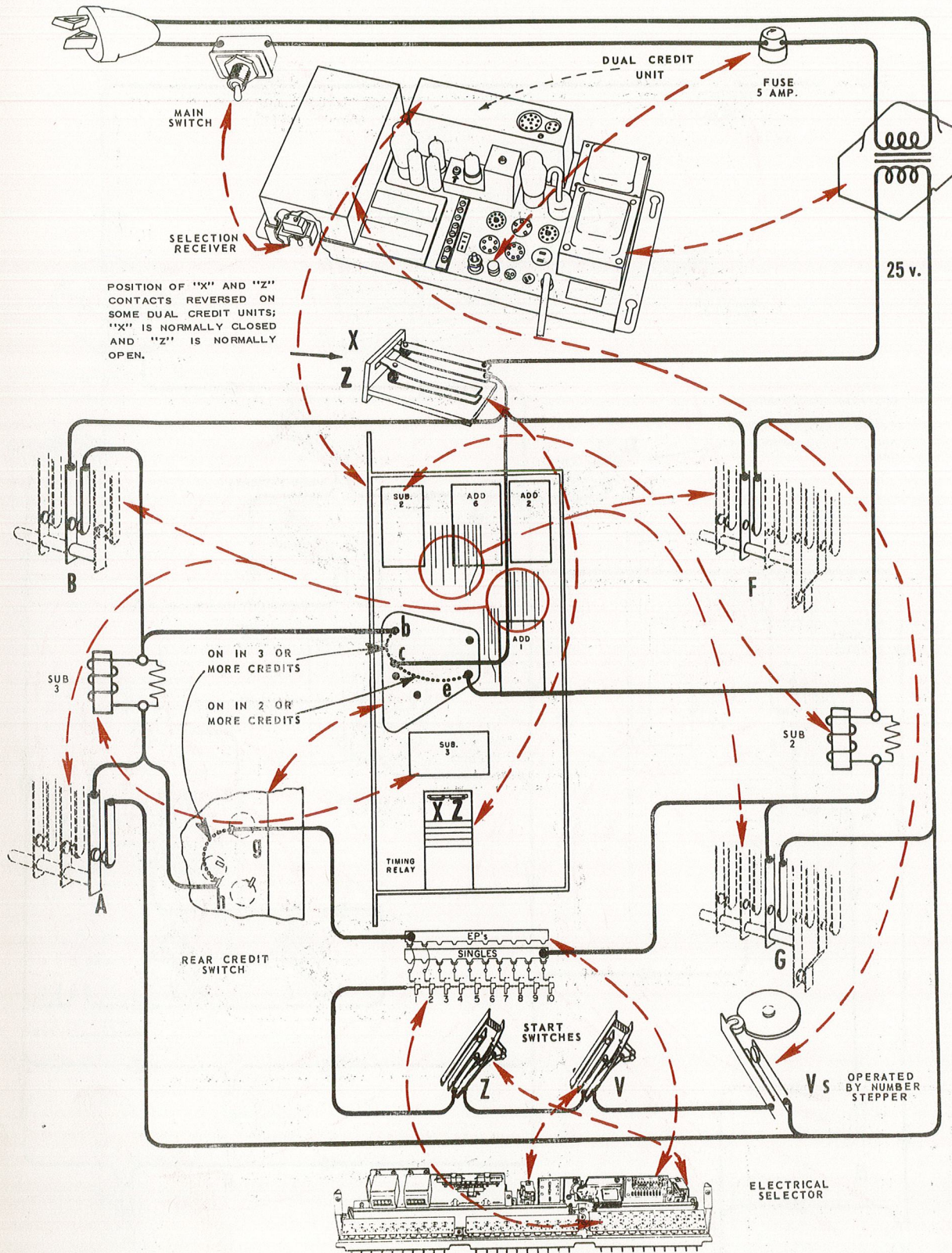
SUBTRACT SOLENOIDS - Picture Diagram
Select-o-matic "200" - V-200-N
 AS USED WITH DUAL CREDIT UNIT TYPE DCU5-L6



TIMING RELAY & LATCH BAR SOLENOIDS - Picture Diagram
Select-o-matic "200" - VL-200-D
 (NOT A SCHEMATIC OR WIRING DIAGRAM)
 AS USED WITH DUAL CREDIT UNIT TYPE DCU 1L-L6



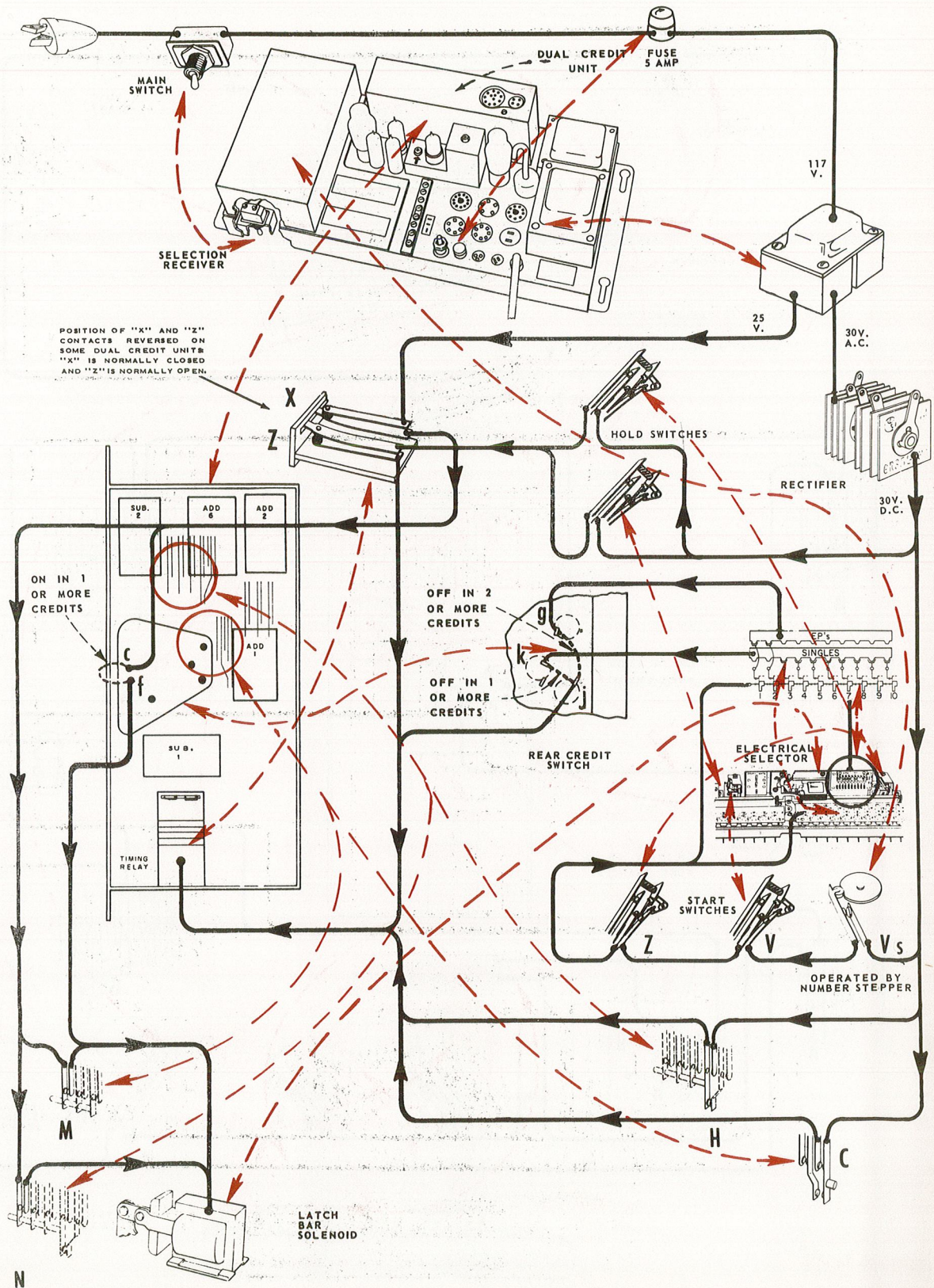
SUBTRACT SOLENOIDS - Picture Diagram
Select-o-matic "200" - VL-200-D
 AS USED WITH DUAL CREDIT UNIT TYPE DCU1L-L6



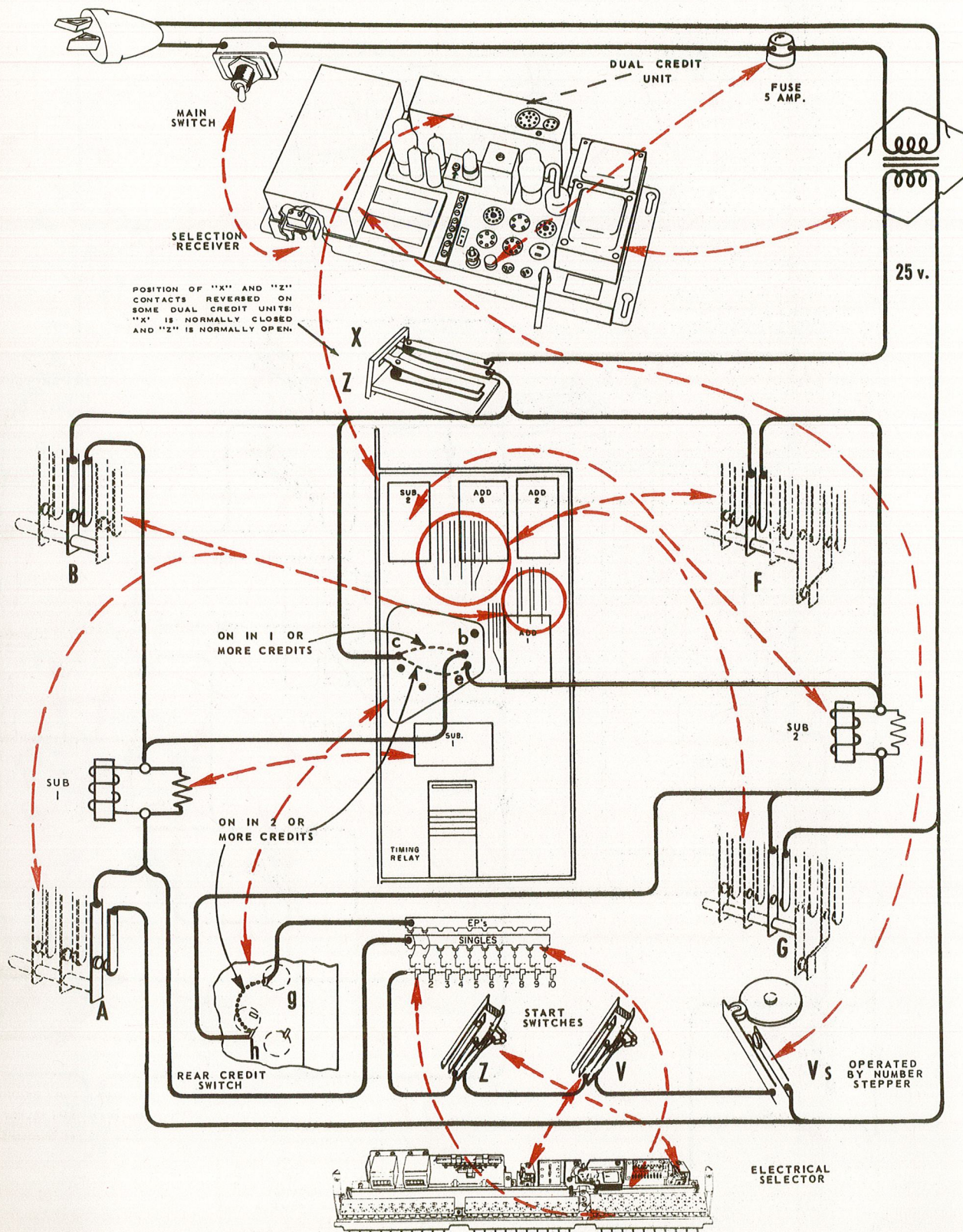
TIMING RELAY & LATCH BAR SOLENOIDS - Picture Diagram

Select-o-matic "200" - VL-200-N

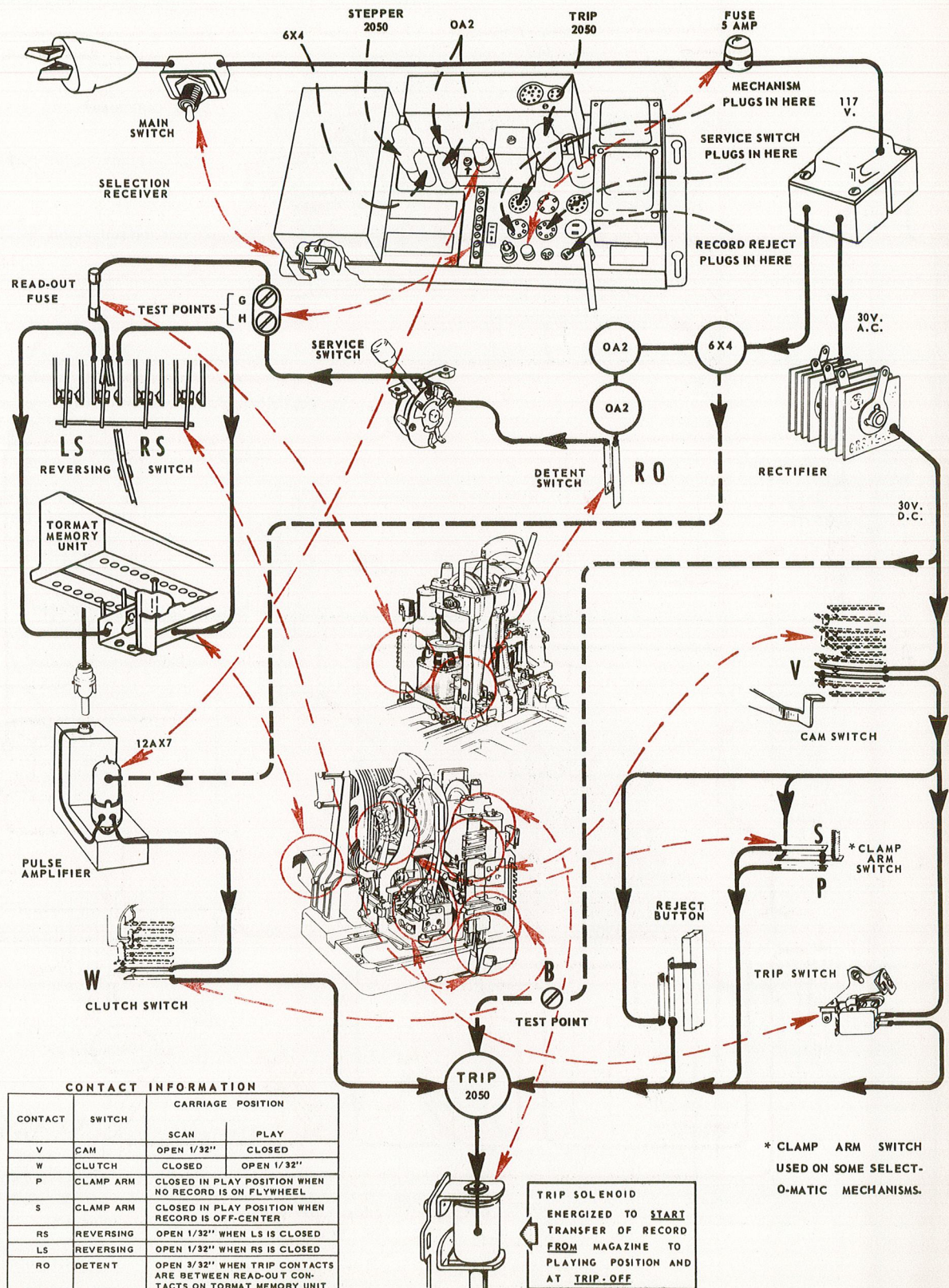
(NOT A SCHEMATIC OR WIRING DIAGRAM)
AS USED WITH DUAL CREDIT UNIT TYPE DCU5L-L6



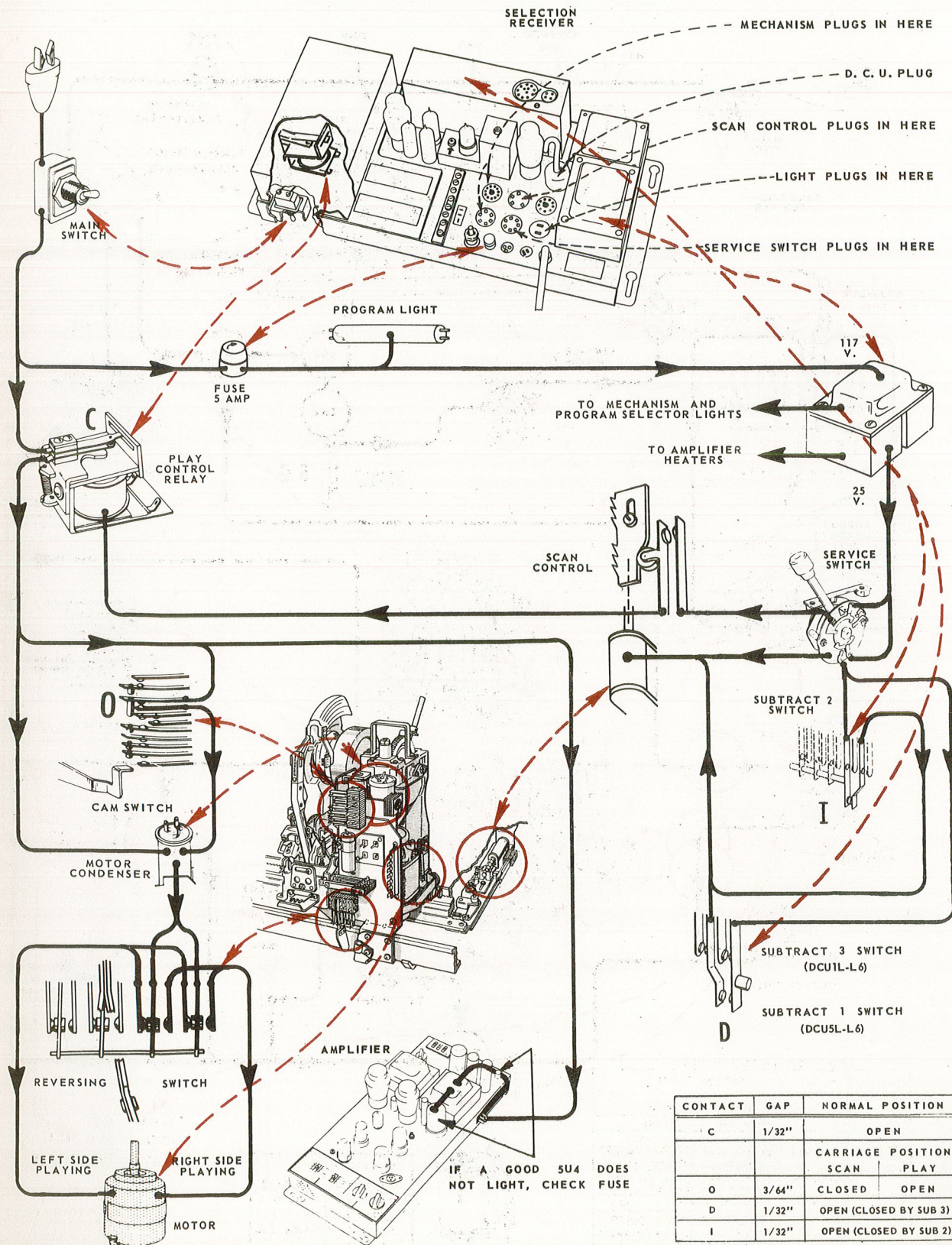
SUBTRACT SOLENOIDS - Picture Diagram
Select-o-matic "200" - VL-200-N
 AS USED WITH DUAL CREDIT UNIT TYPE DCU5L-L6



TRIP SOLENOID - Picture Diagram
Select-o-matic "200" - VL-200-D & VL-200-N
 (NOT A SCHEMATIC OR WIRING DIAGRAM)

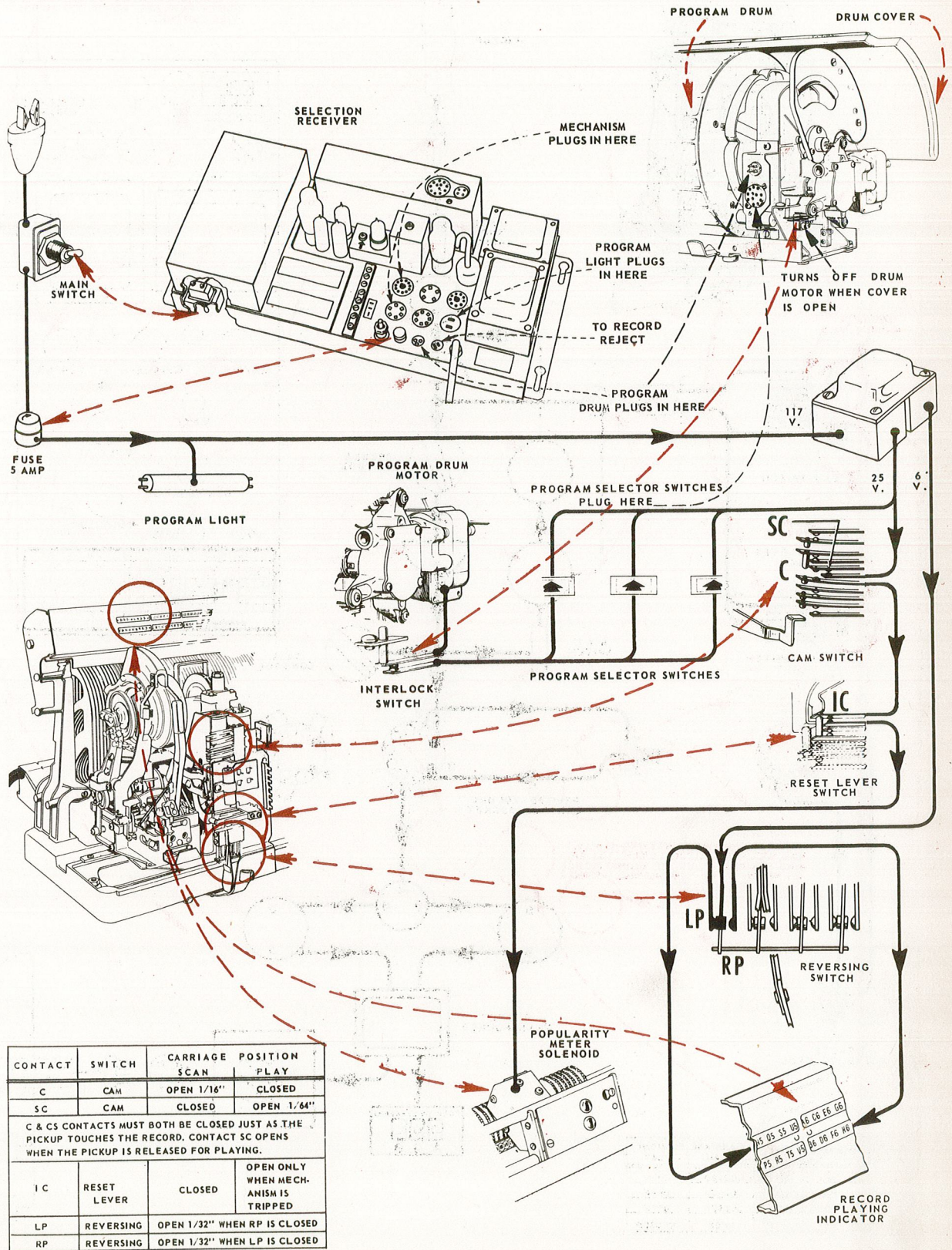


MOTOR & AMPLIFIER - Picture Diagram **Select-o-matic "200" - VL-200-D & VL-200-N** (NOT A SCHEMATIC OR WIRING DIAGRAM)



CONTACT	GAP	NORMAL POSITION
C	1/32"	OPEN
		CARRIAGE POSITION SCAN PLAY
O	3/64"	CLOSED OPEN
D	1/32"	OPEN (CLOSED BY SUB 3)
I	1/32"	OPEN (CLOSED BY SUB 2)

POPULARITY METER & PROGRAM DRUM - Picture Diagram
Select-o-matic "200" - VL-200-D & VL-200-N
 (NOT A SCHEMATIC OR WIRING DIAGRAM)



AMPLIFIER & SOUND - Picture Diagram

Select-o-matic "200" - VL-200-D & VL-200-N

(NOT A SCHEMATIC OR WIRING DIAGRAM)

