



SERVICE SLANTS

YOUR QUESTIONS OR COMMENTS ON "SERVICE SLANTS"
ARE WELCOME AT ANY TIME

ISSUED BY WURLITZER SERVICE DEPT., NORTH TONAWANDA, N. Y.

SWITCH AND BRACKET ASSEMBLY (TONE ARM) PART NO. 53257
for

Superseded by W. 237 MODEL 1250

Assembly of the tone arm switch has been changed to produce normally open contacts when the changer is in the rest position instead of normally closed. The contact pressure in the playing position is therefore greater, and less sensitive to vibration during the playing phase. This also affects auxiliary speakers during change cycle.

Our parts department is now supplying this item under Part No. 53257.

Switches of the early type which are now in the field may be changed to conform with the present assembly as follows:

1. Dis-assembly

Unsolder the tone arm leads from the switch blades and remove the switch and bracket assembly. Remove the two #5 mounting screws, shake proof terminal, washers, and lock washers from the stack and, one at a time, slip the spacers from the top and bottom of the stack. The long blades may now be removed, then the single spacer, brass stop blade and short contact blade from both top and bottom.

2. Preparation of Components for Re-assembly

(a) Clip off the two brass stop blades to conform with length of the spacers and insert them in the center section of the stack. This section of the stack should now consist of 2 spacers (Part No. 16516), 2 brass spacers (as clipped), and 3 spacers (Part No. 16516) mounted on the 2 bushings (Part No. 71100-23). See Fig. 2

(b) Bend the tips of the long contact blades in the direction of contact as indicated in Fig. 1.

3. Assembly

Re-assemble the two switches in the stack as shown in Fig. 2 and attach to the bracket with the screws, washers, shake proof terminal, and lock washers removed in paragraph 1. The blades should extend straight from the stack and have 1/32" opening at contacts. Mount the switch and bracket assembly and connect tone arm leads in the same sequence as removed.

Figure 1

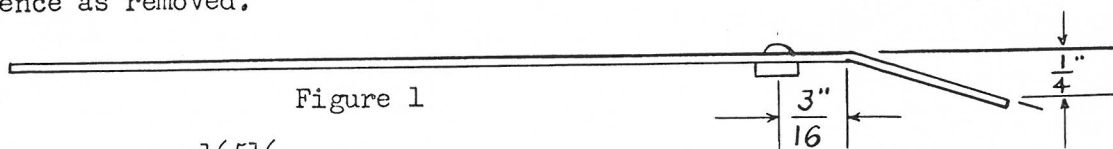
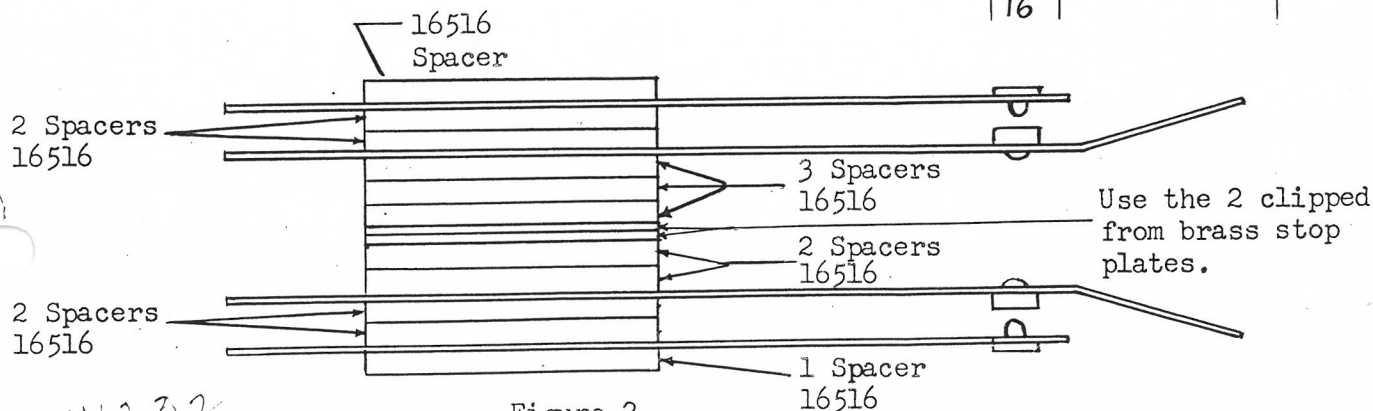


Figure 2



50/1550